

Recombinant human MDH2 protein ab99238

1 References 1 图像

描述	
产品名称	重组人MDH2蛋白
生物活性	<p>Specific activity is > 30 units/mg, and is defined as the amount of enzyme that cleaves 1umole of oxalacetate and beta-NADH to L-malate and beta-NAD per minute at pH7.5 at 25°C</p> <p>Activity Assay</p> <p>Prepare assay buffer into a suitable container and pre-chill on ice before use: The final concentrations are 100 mM Potassium phosphate, 0.13mM beta-nicotinamide adenine dinucleotide, reduced form, 0.25mM oxalacetic acid.</p> <p>Add recombinant MDH protein with various concentrations (0.1ug, 0.5ug, 1ug) in assay buffer.</p> <p>Mix by inversion and equilibrate to 1°C and monitor at A340nm until the value is constant using a spectrophotometer.</p> <p>Record the increase at A340nm for approximately 2 minutes</p>
纯度	<p>> 95 % SDS-PAGE.</p> <p>ab99238 is purified using conventional chromatography techniques.</p>
表达系统	Escherichia coli
Accession	<u>P40926</u>
蛋白长度	Full length protein
无动物成分	No
性质	Recombinant
种属	Human
序列	<p>MGSSHHHHHSSGLVPRGSHMAKVAVLGASGGIGQPLSLL</p> <p>LKNSPLVSRL</p> <p>TLYDIAHTPGVAADLSHIETKAAVKGYLGPEQLPDCLKGCDV</p> <p>VVIPAGVP</p> <p>RKPGMTRDDLFTNATIVATLTAACAQHCPEAMICVIANPVN</p> <p>STIPITAE</p> <p>VFKKHGVYNPNKIFGVTTLDIVRANTFVAELKGLDPARVNVP</p> <p>VIGGHAGK</p> <p>TIIP LISQCTPKVDFPQDQLTALTGRIQEAGTEVVKAKAGAG</p> <p>SATLSMAY</p> <p>AGARFVFSLV DAMNGKEGVVECSFVKSQETECTYFSTPLLLG</p> <p>KKGIEKNL</p> <p>GIGKVSSFEEKMISDAIPELKASIKKGEDFVKTLK</p>

预测分子量	35 kDa including tags
氨基酸	25 to 338
标签	His tag N-Terminus

技术指标

Our Abpromise guarantee covers the use of ab99238 in the following tested applications.	
The application notes include recommended starting dilutions; optimal dilutions/concentrations should be determined by the end user.	
应用	SDS-PAGE Mass Spectrometry Functional Studies
质谱法	MALDI-TOF
形式	Liquid

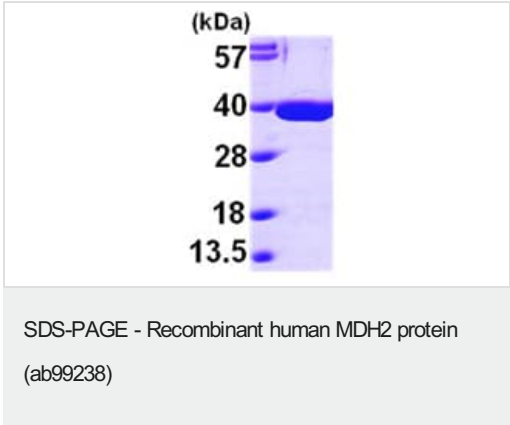
制备和贮存

稳定性和存储	Shipped at 4°C. Upon delivery aliquot and store at -20°C or -80°C. Avoid repeated freeze / thaw cycles. pH: 7.50 Constituents: 0.316% Tris HCl, 10% Glycerol (glycerin, glycerine) This product is an active protein and may elicit a biological response in vivo, handle with caution.
--------	--

常规信息

序列相似性	Belongs to the LDH/MDH superfamily. MDH type 1 family.
翻译后修饰	Acetylation is enhanced by up to 67% after treatment either with trichostin A (TSA) or with nicotinamide (NAM) with the appearance of tri-and tetraacetylations. Glucose also increases acetylation by about 60%.
细胞定位	Mitochondrion matrix.

图片



15% SDS-PAGE showing ab99238 at approximately 35.2kDa (3µg).

Please note: All products are "FOR RESEARCH USE ONLY. NOT FOR USE IN DIAGNOSTIC PROCEDURES"

Our Abpromise to you: Quality guaranteed and expert technical support

- Replacement or refund for products not performing as stated on the datasheet
- Valid for 12 months from date of delivery
- Response to your inquiry within 24 hours

- We provide support in Chinese, English, French, German, Japanese and Spanish
- Extensive multi-media technical resources to help you
- We investigate all quality concerns to ensure our products perform to the highest standards

If the product does not perform as described on this datasheet, we will offer a refund or replacement. For full details of the Abpromise, please visit <https://www.abcam.cn/abpromise> or contact our technical team.

Terms and conditions

- Guarantee only valid for products bought direct from Abcam or one of our authorized distributors