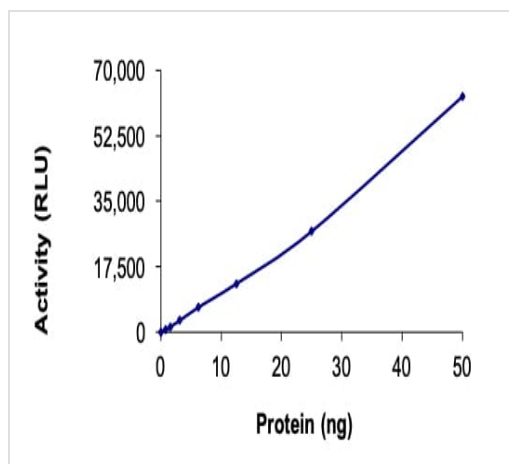


Recombinant human MATK protein ab204136

5 图像

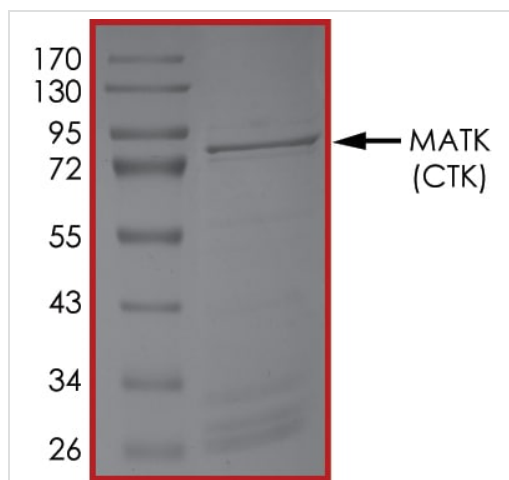
描述	
产品名称	重组人MATK蛋白
生物活性	The specific activity of MATK was determined to be 11 nmol /min/mg as per activity assay protocol.
纯度	> 85 % Densitometry. Affinity purified.
表达系统	Baculovirus infected Sf9 cells
Accession	<u>P42679</u>
蛋白长度	Full length protein
无动物成分	No
性质	Recombinant
种属	Human
序列	MAGRGSLSWRAFHGCDSAEELPRVSPRFLRAWHPPPVARM PTRRWAPG TQCITKCEHTRPKPGELAFRKGDVVTILEACENKSWYRVKHH TSGQEGLL AAGALREREALSADPKLSLMPWFHGKISGQEAVQQLQPPEDG LFLVRESA RHPGDYVLCVSFGRDVIHYRVLHRDGHLTIDEAVFFCNLMDM VEHYSKDK GAICTKLVRPKRKHGTKSAEEELARAGWLLNLQHLTLGAQIG EGEFGAVL QGEYLGQKVAVKNIKCDVTAQAFLDETAVMTKMQHENVRL GVILHQGL YIVMEHVSCKGNLVNFLRTRGRALVNTAQLLQFSLHVAEGMEY LESKKLVH RDLAARNILVSEDLVAKVSDFGLAKAERKGLDSSRLPVKWT PEALKHGK FTSKSDVWSFGVLLWEVFSYGRAPYPKMSLKEVSEAVEKGYR MEPPEGCP GPVHVLMSSCWEAEAPARRPPFRKLAEKLARELRSAGAPASVS GQDADGST SPRSQEP
预测分子量	83 kDa including tags
氨基酸	1 to 507

标签	GST tag N-Terminus
<b>技术指标</b>	
Our <b>Abpromise guarantee</b> covers the use of <b>ab204136</b> in the following tested applications.	
The application notes include recommended starting dilutions; optimal dilutions/concentrations should be determined by the end user.	
应用	Functional Studies SDS-PAGE
形式	Liquid
补充说明	<b>ab204877</b> (Poly (4:1 Glu, Tyr) peptide) can be utilized as a substrate for assessing kinase activity
<b>制备和贮存</b>	
稳定性和存储	Shipped on Dry Ice. Upon delivery aliquot. Store at -80°C. Avoid freeze / thaw cycle. pH: 7.50 Constituents: 0.79% Tris HCl, 0.87% Sodium chloride, 0.31% Glutathione, 0.003% EDTA, 0.004% DTT, 0.002% PMSF, 25% Glycerol (glycerin, glycerine) This product is an active protein and may elicit a biological response in vivo, handle with caution.
<b>常规信息</b>	
功能	Could play a significant role in the signal transduction of hematopoietic cells. May regulate tyrosine kinase activity of SRC-family members in brain by specifically phosphorylating their C-terminal regulatory tyrosine residue which acts as a negative regulatory site. It may play an inhibitory role in the control of T-cell proliferation.
组织特异性	Expressed in various myeloid cell lines, detected in brain and lung.
序列相似性	Belongs to the protein kinase superfamily. Tyr protein kinase family. CSK subfamily. Contains 1 protein kinase domain. Contains 1 SH2 domain. Contains 1 SH3 domain.
翻译后修饰	Phosphorylated upon DNA damage, probably by ATM or ATR.
细胞定位	Cytoplasm.
<b>图片</b>	



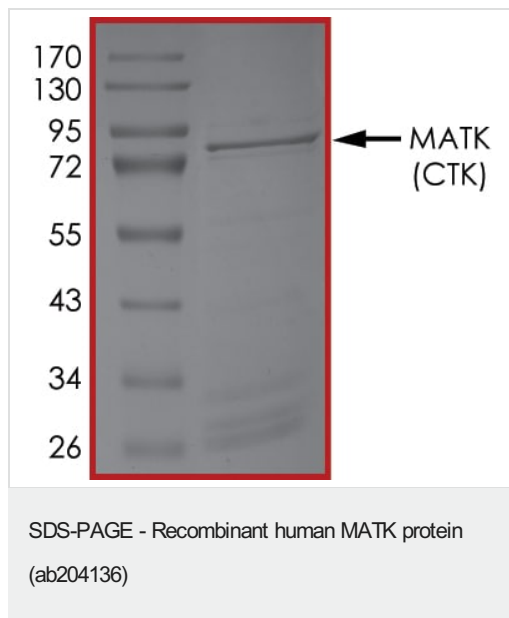
The specific activity of MATK (ab204136) was determined to be 3.8 nmol/min/mg as per activity assay protocol and was equivalent to 12 nmol/min/mg as per radiometric assay

Functional Studies - Recombinant human MATK protein (ab204136)

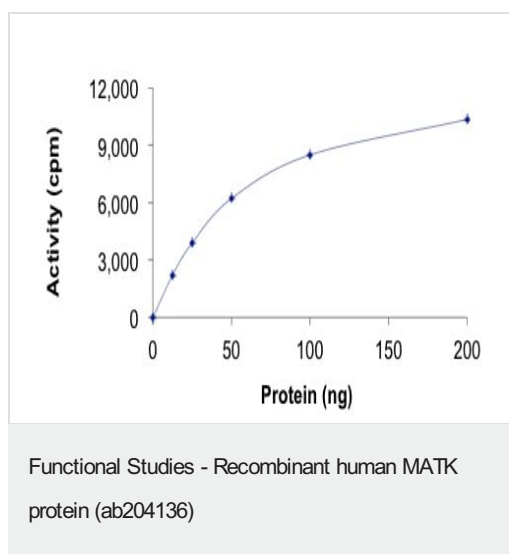


SDS PAGE analysis of ab204136

SDS-PAGE - Recombinant human MATK protein (ab204136)

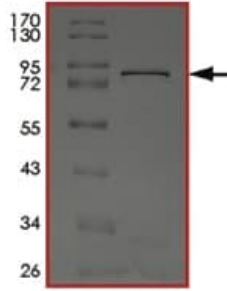


SDS PAGE analysis of ab204136



The specific activity of ab204136 was determined to be 11 nmol /min/mg.

SDS-PAGE showing ab204136.



SDS-PAGE - Recombinant human MATK protein  
(ab204136)

**Please note:** All products are "FOR RESEARCH USE ONLY. NOT FOR USE IN DIAGNOSTIC PROCEDURES"

### Our Abpromise to you: Quality guaranteed and expert technical support

---

- Replacement or refund for products not performing as stated on the datasheet
- Valid for 12 months from date of delivery
- Response to your inquiry within 24 hours
- We provide support in Chinese, English, French, German, Japanese and Spanish
- Extensive multi-media technical resources to help you
- We investigate all quality concerns to ensure our products perform to the highest standards

If the product does not perform as described on this datasheet, we will offer a refund or replacement. For full details of the Abpromise, please visit <https://www.abcam.cn/abpromise> or contact our technical team.

### Terms and conditions

---

- Guarantee only valid for products bought direct from Abcam or one of our authorized distributors