

Recombinant Human Lumican protein (His tag) ab221400

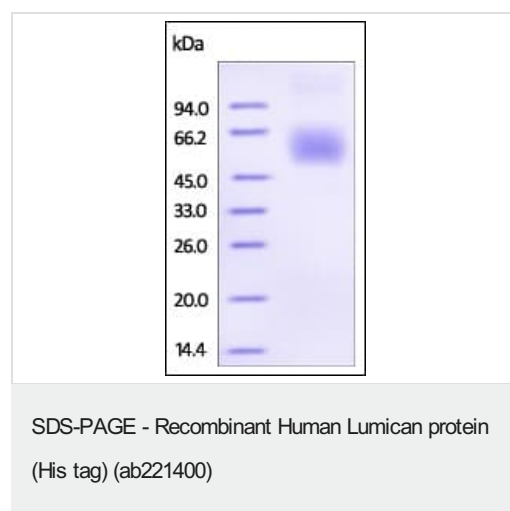
1 图像

描述	
产品名称	重组人Lumican蛋白(His tag)
纯度	> 95 % SDS-PAGE.
内毒素水平	< 1.000 Eu/μg
表达系统	HEK 293 cells
Accession	P51884
蛋白长度	Full length protein
无动物成分	No
性质	Recombinant
种属	Human
序列	QYYDYDFPLSIYGQSSPNCAPECNCPESYPSAMYCDELKLKS VPMVPPGI KYLYLRNNQIDHIDEKAFENVTDLQWLILDHNLLENSKIKGR VFSKLKQL KKLHINHNNLTESVGPLPKSLEDLQLTHNKITKLGSFEGLVN LTFIHLQH NRLKEDAVSAAFKGLKSLEYLDLSFNQIARLPSGLPVSLTL YLDNNKIS NIPDEYFKRFNALQYLRLSHNELADSGIPGNSFNVSSLVELD LSYNKLKN IPTVNENLENYYLEVNQLEKFDIKSFCKILGPLSYSKIKHLR LDGNRISE TSLPPDMECLRVANEVTLN
预测分子量	38 kDa including tags
氨基酸	19 to 338
标签	His tag C-Terminus
额外的序列信息	Mature protein without signal peptide.

技术指标	
Our Abpromise guarantee covers the use of ab221400 in the following tested applications.	
The application notes include recommended starting dilutions; optimal dilutions/concentrations should be determined by the end user.	
应用	SDS-PAGE

形式	Lyophilized
制备和贮存	
稳定性和存储	Shipped at 4°C. Store at -80°C. Avoid freeze / thaw cycle. pH: 7.40 Constituents: PBS, 5% Trehalose
复溶	Reconstitute with sterile deionized water to a concentration of 200 µg/ml.
常规信息	
组织特异性	Cornea and other tissues.
序列相似性	Belongs to the small leucine-rich proteoglycan (SLRP) family. SLRP class II subfamily. Contains 11 LRR (leucine-rich) repeats. Contains 1 LRRNT domain.
发展阶段	Present in the extracellular matrix of human articular cartilage at all ages, although its abundance is far greater in the adult. In the adult cartilage lumican exists predominantly in a glycoprotein form lacking keratan sulfate, whereas the juvenile form of the molecule is a proteoglycan.
翻译后修饰	Sulfated on tyrosine residue(s).
细胞定位	Secreted > extracellular space > extracellular matrix.

图片



SDS-PAGE using ab221400. DTT-reduced protein migrates as 50-65 kDa due to glycosylation.

Please note: All products are "FOR RESEARCH USE ONLY. NOT FOR USE IN DIAGNOSTIC PROCEDURES"

Our Abpromise to you: Quality guaranteed and expert technical support

- Replacement or refund for products not performing as stated on the datasheet
- Valid for 12 months from date of delivery
- Response to your inquiry within 24 hours

- We provide support in Chinese, English, French, German, Japanese and Spanish
- Extensive multi-media technical resources to help you
- We investigate all quality concerns to ensure our products perform to the highest standards

If the product does not perform as described on this datasheet, we will offer a refund or replacement. For full details of the Abpromise, please visit <https://www.abcam.cn/abpromise> or contact our technical team.

Terms and conditions

- Guarantee only valid for products bought direct from Abcam or one of our authorized distributors