

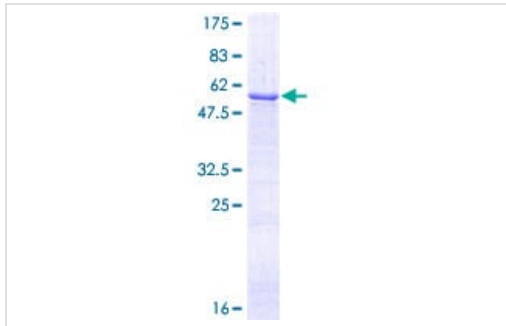
Recombinant Human LRP1 protein ab158828

1 图像

描述	
产品名称	重组人LRP1蛋白
表达系统	Wheat germ
Accession	<u>Q07954-2</u>
蛋白长度	Full length protein
无动物成分	No
性质	Recombinant
种属	Human
序列	MLTPPLLLLLPLLSALVAAAIDAPKTCSPKQFACRDQITCIS KGWRCDGE RDCPDGSDEAPEICPQSKAQRCPNEHNCLGTELCVPMSRLC NGVQDCMD GSDEGPHCRELQGNC SRLGCQHHC VPTLDGPTCYCNSSFQLQ ADGKTCKD FDECSVYGTC SQLCTNTDGSFICGCV EGYLLQPDNR SCKAKN EPVDRPPV LL IANSQNILATYLSGAQVSTITPTSTRQTTAMDFS YANETV CWVHVGDS AAQTLKCARMPGLKGFVDEHTINISLSLHLCVFSKSQQEMG
预测分子量	58 kDa including tags
氨基酸	1 to 292
标签	GST tag N-Terminus
额外的序列信息	This protein is the full length sequence for isoform 2 (UniProt: Q07954-2), which is 292 amino acids. It is not the canonical isoform 1 sequence (4,544 amino acids).

技术指标	
Our Abpromise guarantee covers the use of ab158828 in the following tested applications.	
The application notes include recommended starting dilutions; optimal dilutions/concentrations should be determined by the end user.	
应用	ELISA Western blot SDS-PAGE

形式	Liquid
补充说明	
制备和贮存	
稳定性和存储	<p>Shipped on dry ice. Upon delivery aliquot and store at -80°C. Avoid freeze / thaw cycles.</p> <p>pH: 8.00</p> <p>Constituents: 0.31% Glutathione, 0.79% Tris HCl</p>
常规信息	
功能	<p>Endocytic receptor involved in endocytosis and in phagocytosis of apoptotic cells. Required for early embryonic development. Involved in cellular lipid homeostasis. Involved in the plasma clearance of chylomicron remnants and activated LRPAP1 (alpha 2-macroglobulin), as well as the local metabolism of complexes between plasminogen activators and their endogenous inhibitors. May modulate cellular events, such as APP metabolism, kinase-dependent intracellular signaling, neuronal calcium signaling as well as neurotransmission.</p> <p>Functions as a receptor for Pseudomonas aeruginosa exotoxin A.</p>
组织特异性	Most abundant in liver, brain and lung.
序列相似性	<p>Belongs to the LDLR family.</p> <p>Contains 22 EGF-like domains.</p> <p>Contains 31 LDL-receptor class A domains.</p> <p>Contains 34 LDL-receptor class B repeats.</p>
翻译后修饰	<p>Cleaved into a 85 kDa membrane-spanning subunit (LRP-85) and a 515 kDa large extracellular domain (LRP-515) that remains non-covalently associated. Gamma-secretase-dependent cleavage of LRP-85 releases the intracellular domain from the membrane.</p> <p>The N-terminus is blocked.</p> <p>Phosphorylated on serine and threonine residues.</p> <p>Phosphorylated on tyrosine residues upon stimulation with PDGF. Tyrosine phosphorylation promotes interaction with SHC1.</p>
细胞定位	Cytoplasm. Nucleus. After cleavage, the intracellular domain (LRPICD) is detected both in the cytoplasm and in the nucleus and Cell membrane. Membrane, coated pit.
图片	



SDS-PAGE - Recombinant Human LRP1 protein
(ab158828)

ab158828 on a 12.5% SDS-PAGE stained with Coomassie Blue.

Please note: All products are "FOR RESEARCH USE ONLY. NOT FOR USE IN DIAGNOSTIC PROCEDURES"

Our Abpromise to you: Quality guaranteed and expert technical support

- Replacement or refund for products not performing as stated on the datasheet
- Valid for 12 months from date of delivery
- Response to your inquiry within 24 hours
- We provide support in Chinese, English, French, German, Japanese and Spanish
- Extensive multi-media technical resources to help you
- We investigate all quality concerns to ensure our products perform to the highest standards

If the product does not perform as described on this datasheet, we will offer a refund or replacement. For full details of the Abpromise, please visit <https://www.abcam.cn/abpromise> or contact our technical team.

Terms and conditions

- Guarantee only valid for products bought direct from Abcam or one of our authorized distributors