

Recombinant human LDL Receptor protein ab198760

2 图像

描述

产品名称	重组人LDL Receptor蛋白
生物活性	Assay Conditions: 50 µL reaction mix (50 mM HEPES pH 7.4, 100 mM NaCl, 200 µM CaCl ₂ , 0.05% Tween-20, 0.1% BSA, and up to 1500 ng PCSK9) is added to the wells coated with ab198760. Incubate for 2hr. Add antibody against polyhistidine and then incubate 1 hr. Add secondary HRP labeled antibody and incubate 30 min. Finally, add HRP chemiluminescent substrates and read luminescence.
纯度	>= 87 % SDS-PAGE.
表达系统	HEK 293 cells
Accession	<u>P01130</u>
蛋白长度	Protein fragment
无动物成分	No
性质	Recombinant
种属	Human
序列	<p>AVGDR CERNEFQCQDGKCI SYKWVCDGSAECQDGSDESQETC LSVTCKSG DFSCGGRVNRICIPQFWRC DGQVDCDNGSDEQGCPPKTC SQDE FRCHDGKC ISRQFVCDSDRDCLDGSDEASCPVLTCGPASFQCNSSTCIPQ LWACDNDP DCEDGSDEWPQRCRGLYVFQGDSSPCSAFEFHCLSGECIHSS WRC DGGPD CKDKSDEENCAVATCRPDEFQCS DGNCIHGSRQCDREYDCKD MSDEVGCV NVTLC EGP NKF KCHSGECITL DKVCNMARDCRDWSDEPIKEC GTNECLDN NGGCSHVCNDLKIGYECLCPDGFQLVAQRRCEDIDECQDPDT CSQLCVNL EGGYKCQCEEGFQLDPHTKACKAVGSIAYLFFTNRHEVRKMT LDRSEYTS LIPNLRNVVALDTEVASNRIYWSDL SQRMICSTQLDRAHGVS SYDTVISR DIQAPDGLAVDWIHSNIYWTDSVLGTVSVADTKGVKRTLFR ENGSKPRA</p>

IVVDPVHGFMYWTDWGTAKIKKGGNGVDIYSLVTENIQWP
NGITLDLL
SGRLYWVDSKLSISSIDVNGGNRKTILEDEKRLAHPFSLAV
FEDKVFWT
DIINEAIFSANRLTGSDVNLLAENLLSPEDMVL FHNLTQPRG
VNWERTT
LSNGGCQYLCLPAPQINPHSPKFTCACPDGMLLARDMRSCLT
EAEAAVAT
QETSTVRLKVSSTAVRTQHTTTRPVPDTSRLPGATPGLTTVE
IVTMSHQA LGDVAGRGNEKKPSSVRDYKDDDDK

预测分子量	87 kDa including tags
氨基酸	22 to 788
标签	DDDDK tag C-Terminus
额外的序列信息	NM_000527.

技术指标

Our **Abpromise guarantee** covers the use of **ab198760** in the following tested applications.

The application notes include recommended starting dilutions; optimal dilutions/concentrations should be determined by the end user.

应用	SDS-PAGE Functional Studies
形式	Liquid

制备和贮存

稳定性和存储	Shipped on Dry Ice. Store at -80°C. Avoid freeze / thaw cycle. pH: 8.00 Constituents: 0.63% Tris HCl, 0.64% Sodium chloride, 0.02% Potassium chloride, 20% Glycerol (glycerin, glycerine) This product is an active protein and may elicit a biological response in vivo, handle with caution.
--------	---

常规信息

功能	Binds LDL, the major cholesterol-carrying lipoprotein of plasma, and transports it into cells by endocytosis. In order to be internalized, the receptor-ligand complexes must first cluster into clathrin-coated pits. In case of HIV-1 infection, functions as a receptor for extracellular Tat in neurons, mediating its internalization in uninfected cells.
疾病相关	Defects in LDLR are the cause of familial hypercholesterolemia (FH) [MIM:143890]; a common autosomal semi-dominant disease that affects about 1 in 500 individuals. The receptor defect impairs the catabolism of LDL, and the resultant elevation in plasma LDL-cholesterol promotes deposition of cholesterol in the skin (xanthelasma), tendons (xanthomas), and coronary arteries (atherosclerosis).
序列相似性	Belongs to the LDLR family. Contains 3 EGF-like domains. Contains 7 LDL-receptor class A domains.

Contains 6 LDL-receptor class B repeats.

翻译后修饰

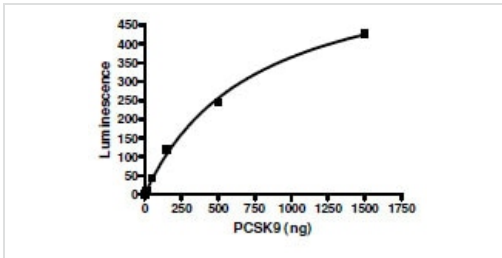
N- and O-glycosylated.

Ubiquitinated by MYLIP leading to degradation.

细胞定位

Cell membrane. Endomembrane system. Membrane > clathrin-coated pit. Found distributed from the plasma membrane to intracellular compartments.

图片



Activity assay using ab198760 showing PCSK9-LDL Receptor interaction.

Functional Studies - Recombinant human LDL Receptor protein (ab198760)



4-20% SDS-PAGE analysis of 3 µg ab198760 with Coomassie staining.

LDL Receptor is heavily glycosylated, resulting in higher molecular weight. The two bands shown correspond to differing states of glycosylation.

SDS-PAGE - Recombinant human LDL Receptor protein (ab198760)

Please note: All products are "FOR RESEARCH USE ONLY. NOT FOR USE IN DIAGNOSTIC PROCEDURES"

Our Abpromise to you: Quality guaranteed and expert technical support

- Replacement or refund for products not performing as stated on the datasheet
- Valid for 12 months from date of delivery
- Response to your inquiry within 24 hours
- We provide support in Chinese, English, French, German, Japanese and Spanish
- Extensive multi-media technical resources to help you
- We investigate all quality concerns to ensure our products perform to the highest standards

If the product does not perform as described on this datasheet, we will offer a refund or replacement. For full details of the Abpromise, please visit <https://www.abcam.cn/abpromise> or contact our technical team.

Terms and conditions

- Guarantee only valid for products bought direct from Abcam or one of our authorized distributors