

Recombinant Human Laminin 2 alpha protein ab114155

1 图像

描述	
产品名称	重组人Laminin 2 alpha蛋白
表达系统	Wheat germ
Accession	<b><u>P24043</u></b>
蛋白长度	Protein fragment
无动物成分	No
性质	Recombinant
种属	Human
序列	DAGVPGHLCDGQWHKVTANKIKHRIELTVDGNQVEAQSPNPA STSADTND PVFVGGFDDLKQFGLTTSIPFRGCIRSLKLTGKTGKPLEVN FAKALELR GVQPVSPAN
预测分子量	38 kDa including tags
氨基酸	3013 to 3122

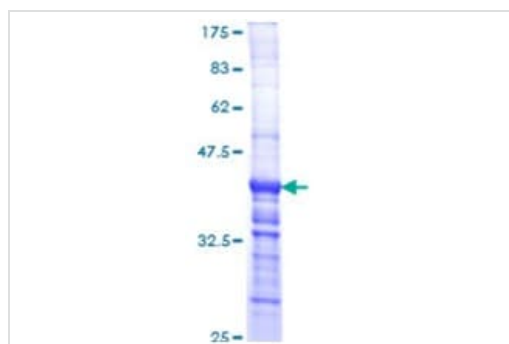
技术指标	
Our <b><u>Abpromise guarantee</u></b> covers the use of <b>ab114155</b> in the following tested applications.	
The application notes include recommended starting dilutions; optimal dilutions/concentrations should be determined by the end user.	
应用	Western blot ELISA SDS-PAGE
形式	Liquid
补充说明	

制备和贮存	
稳定性和存储	Shipped on dry ice. Upon delivery aliquot and store at -80°C. Avoid freeze / thaw cycles. pH: 8.00 Constituents: 0.3% Glutathione, 0.79% Tris HCl

## 常规信息

功能	Binding to cells via a high affinity receptor, laminin is thought to mediate the attachment, migration and organization of cells into tissues during embryonic development by interacting with other extracellular matrix components.
组织特异性	Placenta, striated muscle, peripheral nerve, cardiac muscle, pancreas, lung, spleen, kidney, adrenal gland, skin, testis, meninges, choroid plexus, and some other regions of the brain; not in liver, thymus and bone.
疾病相关	Defects in LAMA2 are the cause of merosin-deficient congenital muscular dystrophy type 1A (MDC1A) [MM:607855]. MDC1A is characterized by difficulty walking, hypotonia, proximal weakness, hyporeflexia, and white matter hypodensity on MRI.
序列相似性	Contains 17 laminin EGF-like domains. Contains 5 laminin G-like domains. Contains 2 laminin IV type A domains. Contains 1 laminin N-terminal domain.
结构域	The alpha-helical domains I and II are thought to interact with other laminin chains to form a coiled coil structure. Domains VI, IV and G are globular.
细胞定位	Secreted > extracellular space > extracellular matrix > basement membrane. Major component.

## 图片



SDS-PAGE - Recombinant Human Laminin 2 alpha protein (ab114155)

12.5% SDS-PAGE analysis of ab114155, stained with Coomassie Blue.

**Please note:** All products are "FOR RESEARCH USE ONLY. NOT FOR USE IN DIAGNOSTIC PROCEDURES"

## Our Abpromise to you: Quality guaranteed and expert technical support

- Replacement or refund for products not performing as stated on the datasheet
- Valid for 12 months from date of delivery
- Response to your inquiry within 24 hours
- We provide support in Chinese, English, French, German, Japanese and Spanish

- Extensive multi-media technical resources to help you
- We investigate all quality concerns to ensure our products perform to the highest standards

If the product does not perform as described on this datasheet, we will offer a refund or replacement. For full details of the Abpromise, please visit <https://www.abcam.cn/abpromise> or contact our technical team.

#### **Terms and conditions**

---

- Guarantee only valid for products bought direct from Abcam or one of our authorized distributors