

Recombinant human Lactate Dehydrogenase protein (Active) ab93699

[4 References](#) [2 图像](#)

描述

| | |
|------------------|--|
| 产品名称 | 重组人Lactate Dehydrogenase蛋白(Active) |
| 生物活性 | Specific activity is > 300 units/mg. in which one unit will convert 1.0 umole of pyruvate to L-lactate and beta-NAD per minute at pH 7.5 at 37°C. |
| | Activity Assay |
| | Prepare a 1.5 ml reaction mix into a suitable container, adjust to pH 7.5 at 37°C and pre-chill on ice before use: The final concentrations are 100mM Sodium phosphate, 0.12 mM beta-nicotinamide adenine dinucleotide, reduced form, 2.3mM Pyruvate, 0.033% (w/v) bovine serum albumin. |
| | Equilibrate to 37°C and monitor at A340nm until the value is constant using a spectrophotometer. |
| | Add 50ul of recombinant LDHA protein in various concentrations (0.1ug, 0.5ug) in assay buffer. |
| | Mix by inversion and record the increase at A340nm for 5 minutes. |
| 纯度 | > 95 % SDS-PAGE. ab93699 is purified by using conventional chromatography techniques. |
| 表达系统 | Escherichia coli |
| Accession | <u>P00338</u> |
| 蛋白长度 | Full length protein |
| 无动物成分 | No |
| 性质 | Recombinant |
| 种属 | Human |
| 序列 | <pre> MGSSHHHHHH SSSLVPRGSH MATLKDQLIY NLLKEEQTPQ NKITVVGVA VGMACAISIL MKDLADELAL VDVIEDKLGK EMDLQHGSL FLRTPKIVSG KDYNVTANSK LVIITAGARQ QEGESRLNLV QRNVNIFKFI IPNVVKYSPN CKLLIVSNPV DILTYVAWKI SGFPKNRVIG SGCNLDSARF RYLMGERLGV HPLSCHGWVL GEHGDSSVPV WSGMNVAGVS LKTLHPDLGT DKDKEQWKEV HKQVVESAYE VIKLKGYSW AIGLSVADLA ESIMKNLRRV HPVSTMIKGL YGIKDDVFLS VPCILGQNGI SDLVKVTLTS </pre> |

| | |
|---------|--------------------|
| 预测分子量 | 39 kDa |
| 氨基酸 | 1 to 332 |
| 标签 | His tag N-Terminus |
| 额外的序列信息 | (NP_005557) |

技术指标

Our **Abpromise guarantee** covers the use of **ab93699** in the following tested applications.

The application notes include recommended starting dilutions; optimal dilutions/concentrations should be determined by the end user.

| | |
|------|--|
| 应用 | Functional Studies SDS-PAGE Western blot |
| 质谱法 | MALDI-TOF |
| 形式 | Liquid |
| 补充说明 | Concentration determined by Bradford assay. |

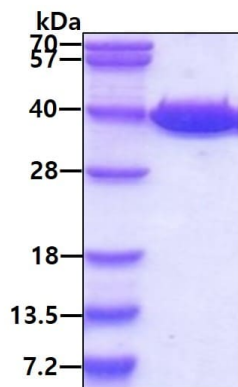
制备和贮存

| | |
|--------|--|
| 稳定性和存储 | Shipped at 4°C. Store at +4°C short term (1-2 weeks). Upon delivery aliquot. Store at -20°C or -80°C. Avoid freeze / thaw cycle. pH: 8.00 Constituents: 0.316% Tris HCl, 20% Glycerol, 0.58% Sodium chloride This product is an active protein and may elicit a biological response in vivo, handle with caution. |
|--------|--|

常规信息

| | |
|-------|---|
| 通路 | Fermentation; pyruvate fermentation to lactate; (S)-lactate from pyruvate: step 1/1. |
| 疾病相关 | Defects in LDHA are the cause of glycogen storage disease type 11 (GSD11) [MIM:612933]. A metabolic disorder that results in exertional myoglobinuria, pain, cramps and easy fatigue. |
| 序列相似性 | Belongs to the LDH/MDH superfamily. LDH family. |
| 翻译后修饰 | ISGylated. |
| 细胞定位 | Cytoplasm. |

图片

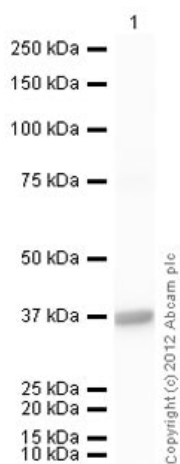


SDS-PAGE - Recombinant human Lactate Dehydrogenase protein (Active) (ab93699)

SDS-PAGE analysis of Recombinant Human Lactate Dehydrogenase protein (ab93699), under reducing conditions. Proteins visualized by coomassie blue stain.

Lane 1: Molecular Weight Standards

Lane 2: 3 µg Recombinant Human Lactate Dehydrogenase protein



Western blot - Recombinant human Lactate Dehydrogenase protein (Active) (ab93699)

Please note: All products are "FOR RESEARCH USE ONLY. NOT FOR USE IN DIAGNOSTIC PROCEDURES"

Our Abpromise to you: Quality guaranteed and expert technical support

- Replacement or refund for products not performing as stated on the datasheet
- Valid for 12 months from date of delivery
- Response to your inquiry within 24 hours
- We provide support in Chinese, English, French, German, Japanese and Spanish

- Extensive multi-media technical resources to help you
- We investigate all quality concerns to ensure our products perform to the highest standards

If the product does not perform as described on this datasheet, we will offer a refund or replacement. For full details of the Abpromise, please visit <https://www.abcam.cn/abpromise> or contact our technical team.

Terms and conditions

- Guarantee only valid for products bought direct from Abcam or one of our authorized distributors