

Recombinant Human KDEL Receptor protein ab153142

1 图像

描述	
产品名称	重组人KDEL Receptor蛋白
表达系统	Wheat germ
蛋白长度	Full length protein
无动物成分	No
性质	Recombinant
种属	Human
序列	MNLFRFLGDLSHLLAIILLLLKIWKSRSCAGISGKSQVLFAV VFTARYLD LFTNYISLYNTCMKVVIYIACSFTTVWLIYSKFKATYDGNHDT FRVEFLVV PTAILAFLVNHDFTPLEILWTFSIYLESVAILPQLFMVSKTG EAETITSH YLFALGVYRTLFLFNWIWRYHFEGFFDLIAIVAGLVQTVLYC DFFYLYIT KVLKGKKLSLPA
氨基酸	1 to 212
标签	GST tag N-Terminus

技术指标	
Our <b>Abpromise guarantee</b> covers the use of <b>ab153142</b> in the following tested applications.	
The application notes include recommended starting dilutions; optimal dilutions/concentrations should be determined by the end user.	
应用	Western blot ELISA
形式	Liquid
补充说明	

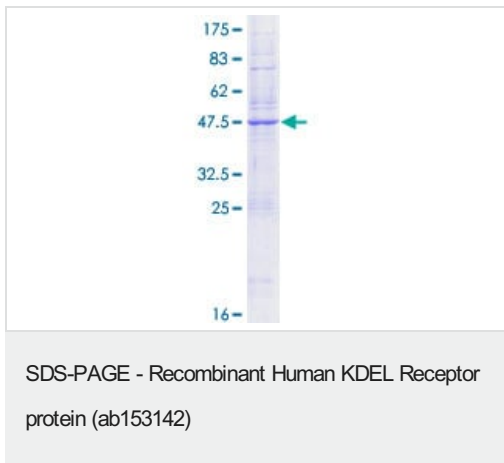
制备和贮存	
稳定性和存储	Shipped on dry ice. Upon delivery aliquot and store at -80°C. Avoid freeze / thaw cycles. pH: 8.00

Constituents: 0.31% Glutathione, 0.79% Tris HCl

## 常规信息

功能	Required for the retention of luminal endoplasmic reticulum resident proteins via vesicular recycling. This receptor recognizes the C-terminal K-D-E-L motif. COPI-coated transport intermediates, either in the form of round vesicles or as tubular processes, mediate retrograde traffic of the KDEL receptor-ligand complexes. Also required for normal vesicular traffic through the Golgi.
序列相似性	Belongs to the ERD2 family.
翻译后修饰	Phosphorylation by PKA at Ser-209 is required for endoplasmic reticulum retention function.
细胞定位	Cytoplasmic vesicle, COPI-coated vesicle membrane. Endoplasmic reticulum membrane. Endoplasmic reticulum-Golgi intermediate compartment membrane.

## 图片



ab153142 on a 12.5% SDS-PAGE stained with Coomassie Blue.

**Please note:** All products are "FOR RESEARCH USE ONLY. NOT FOR USE IN DIAGNOSTIC PROCEDURES"

## Our Abpromise to you: Quality guaranteed and expert technical support

- Replacement or refund for products not performing as stated on the datasheet
- Valid for 12 months from date of delivery
- Response to your inquiry within 24 hours
- We provide support in Chinese, English, French, German, Japanese and Spanish
- Extensive multi-media technical resources to help you
- We investigate all quality concerns to ensure our products perform to the highest standards

If the product does not perform as described on this datasheet, we will offer a refund or replacement. For full details of the Abpromise, please visit <https://www.abcam.cn/abpromise> or contact our technical team.

## Terms and conditions

- Guarantee only valid for products bought direct from Abcam or one of our authorized distributors