

# Recombinant human ITK/EMT protein ab60300

## 4 图像

### 描述

---

产品名称	重组人ITK/EMT蛋白
生物活性	Specific activity: 58 nmol/min/mg.
纯度	> 90 % Densitometry. Affinity purified.
表达系统	Baculovirus infected Sf9 cells
Accession	<b><u>Q08881</u></b>
蛋白长度	Protein fragment
无动物成分	No
性质	Recombinant
种属	Human
预测分子量	53 kDa
氨基酸	352 to 620
标签	GST tag N-Terminus
额外的序列信息	Recombinant fragment, corresponding to amino acids 352-end of Human ITK.

### 技术指标

---

Our **Abpromise guarantee** covers the use of **ab60300** in the following tested applications.

The application notes include recommended starting dilutions; optimal dilutions/concentrations should be determined by the end user.

应用	Functional Studies SDS-PAGE
形式	Liquid
补充说明	<b>ab43614</b> (Human Myelin Basic Protein full length protein) can be utilized as a substrate for assessing Kinase activity Previously labelled as ITK.

### 制备和贮存

---

稳定性和存储	Shipped on dry ice. Upon delivery aliquot and store at -80°C. Avoid freeze / thaw cycles. pH: 7.50
--------	---

Constituents: 0.0038% EGTA, 0.00174% PMSF, 0.00385% DTT, 0.79% Tris HCl, 0.00292% EDTA, 25% Glycerol (glycerin, glycerine), 0.87% Sodium chloride

This product is an active protein and may elicit a biological response in vivo, handle with caution.

## 常规信息

### 功能

Plays a role in T-cell proliferation and differentiation.

### 组织特异性

T-cell lines and natural killer cell lines.

### 疾病相关

Defects in ITK are the cause of lymphoproliferative syndrome EBV-associated autosomal type 1 (LPSA1) [MIM:613011]. LPSA1 is a rare immunodeficiency characterized by extreme susceptibility to infection with Epstein-Barr virus (EBV). Inadequate immune response to EBV can have a fatal outcome. Clinical features include splenomegaly, lymphadenopathy, anemia, thrombocytopenia, pancytopenia, recurrent infections. There is an increased risk for lymphoma.

### 序列相似性

Belongs to the protein kinase superfamily. Tyr protein kinase family. TEC subfamily.

Contains 1 Btk-type zinc finger.

Contains 1 PH domain.

Contains 1 protein kinase domain.

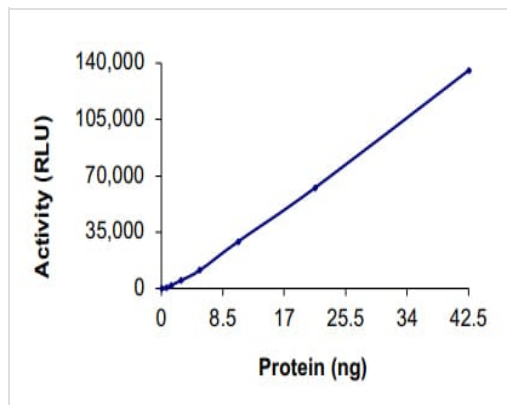
Contains 1 SH2 domain.

Contains 1 SH3 domain.

### 细胞定位

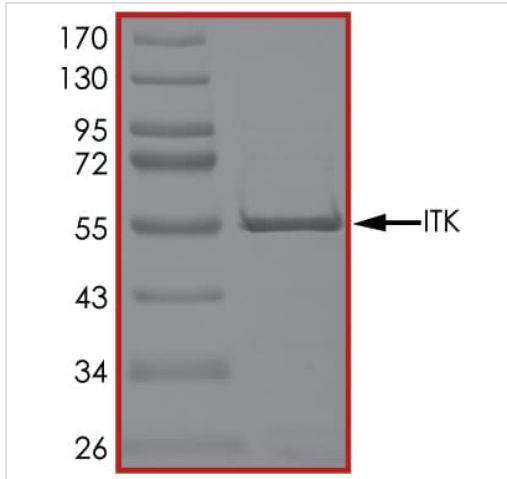
Cell membrane. Localizes to cell surface receptors in the plasma membrane after stimulation with respective receptors (TCR, CD28, CD2) in T-cells.

## 图片



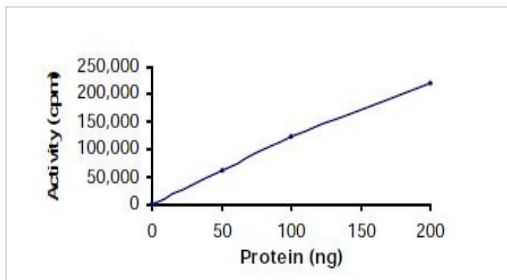
The specific activity of ITK/EMT (ab60300) was determined to be 35 nmol/min/mg as per activity assay protocol and was equivalent to 50 nmol/min/mg as per radiometric assay

Functional Studies - Recombinant human ITK/EMT protein (ab60300)



SDS PAGE analysis of ab60300

SDS-PAGE - Recombinant human ITK/EMT protein (ab60300)



Sample Kinase assay plot.

Functional Studies - Recombinant human ITK/EMT protein (ab60300)



ab60300 on SDS-PAGE.

SDS-PAGE - Recombinant human ITK/EMT protein (ab60300)

**Please note:** All products are "FOR RESEARCH USE ONLY. NOT FOR USE IN DIAGNOSTIC PROCEDURES"

### **Our Abpromise to you: Quality guaranteed and expert technical support**

---

- Replacement or refund for products not performing as stated on the datasheet
- Valid for 12 months from date of delivery
- Response to your inquiry within 24 hours
  
- We provide support in Chinese, English, French, German, Japanese and Spanish
- Extensive multi-media technical resources to help you
- We investigate all quality concerns to ensure our products perform to the highest standards

If the product does not perform as described on this datasheet, we will offer a refund or replacement. For full details of the Abpromise, please visit <https://www.abcam.cn/abpromise> or contact our technical team.

### **Terms and conditions**

---

- Guarantee only valid for products bought direct from Abcam or one of our authorized distributors