

Recombinant Human IRGM protein (denatured) ab137153

1 图像

描述	
产品名称	重组人IRGM蛋白(denatured)
纯度	> 90 % SDS-PAGE.
表达系统	Escherichia coli
Accession	<u>A1A4Y4</u>
蛋白长度	Protein fragment
无动物成分	No
性质	Recombinant
种属	Human
序列	MGSSHHHHHHSSGLVPRGSHMKETLKIVSRTPVNITMAGDSG NGMSTFIS ALRNTGHEGKASPTELVKATQRCASYFSSHFSNVVLWDLPG TGSATTTL ENYLMEMQFNRYDFIMVASAQFSMNHVMLAKTAEDMGKKFYI VWTKLDMD LSTGALPEVQLLQIRENVLENLQKERVCEY
预测分子量	20 kDa including tags
氨基酸	23 to 181
标签	His tag N-Terminus

技术指标	
Our <b>Abpromise guarantee</b> covers the use of <b>ab137153</b> in the following tested applications.	
The application notes include recommended starting dilutions; optimal dilutions/concentrations should be determined by the end user.	
应用	SDS-PAGE
形式	Liquid

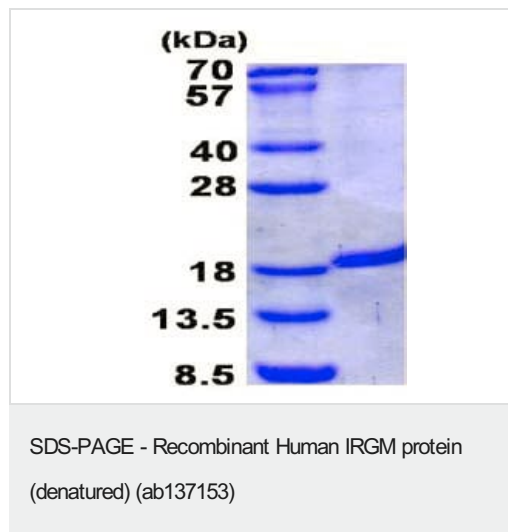
制备和贮存	
稳定性和存储	Shipped at 4°C. Store at +4°C short term (1-2 weeks). Upon delivery aliquot. Store at -20°C or -80°C. Avoid freeze / thaw cycle.  pH: 8.00

Constituents: 12.01% Urea, 0.32% Tris HCl, 10% Glycerol (glycerin, glycerine)

## 常规信息

功能	Putative GTPase which is required for clearance of acute protozoan and bacterial infections. Functions in innate immune response probably through regulation of autophagy. May regulate proinflammatory cytokine production and prevent endotoxemia upon infection. May also play a role in macrophages adhesion and motility.
组织特异性	Widely expressed (at protein level). Expressed in several tissues including colon, small bowel and peripheral blood leukocytes.
疾病相关	Defects in IRGM are the cause of susceptibility to inflammatory bowel disease type 19 (IBD19) [MIM:612278]. A chronic, relapsing inflammation of the gastrointestinal tract with a complex etiology. It is subdivided into Crohn disease and ulcerative colitis phenotypes. Crohn disease may affect any part of the gastrointestinal tract from the mouth to the anus, but most frequently it involves the terminal ileum and colon. Bowel inflammation is transmural and discontinuous; it may contain granulomas or be associated with intestinal or perianal fistulas. In contrast, in ulcerative colitis, the inflammation is continuous and limited to rectal and colonic mucosal layers; fistulas and granulomas are not observed. Both diseases include extraintestinal inflammation of the skin, eyes, or joints.
序列相似性	Belongs to the interferon-inducible GTPase family.
细胞定位	Golgi apparatus membrane. Cell membrane. Cytoplasmic vesicle > phagosome membrane. Cytoplasmic vesicle > autophagosome membrane. Cell projection > phagocytic cup. Behaves like an integral membrane protein (By similarity). Recruited to the plasma membrane around forming phagocytic cups, it remains associated with maturing autophagosomes (By similarity). Preferentially associated with cis- and medial-Golgi.

## 图片



15% SDS-PAGE analysis of 3 µg ab137153.

**Please note:** All products are "FOR RESEARCH USE ONLY. NOT FOR USE IN DIAGNOSTIC PROCEDURES"

### **Our Abpromise to you: Quality guaranteed and expert technical support**

---

- Replacement or refund for products not performing as stated on the datasheet
- Valid for 12 months from date of delivery
- Response to your inquiry within 24 hours
  
- We provide support in Chinese, English, French, German, Japanese and Spanish
- Extensive multi-media technical resources to help you
- We investigate all quality concerns to ensure our products perform to the highest standards

If the product does not perform as described on this datasheet, we will offer a refund or replacement. For full details of the Abpromise, please visit <https://www.abcam.cn/abpromise> or contact our technical team.

### **Terms and conditions**

---

- Guarantee only valid for products bought direct from Abcam or one of our authorized distributors