

### Recombinant human IRE1b protein ab190994

#### 5 图像

#### 描述

<b>产品名称</b>	重组人IRE1b蛋白
<b>生物活性</b>	The specific activity of ab190994 ws determined to be 2.6 nmol/ min/ mg.
<b>纯度</b>	> 95 % SDS-PAGE. Affinity purified.
<b>表达系统</b>	Baculovirus infected Sf9 cells
<b>Accession</b>	<b><u>Q76MJ5</u></b>
<b>蛋白长度</b>	Protein fragment
<b>无动物成分</b>	No
<b>性质</b>	Recombinant
<b>种属</b>	Human
<b>序列</b>	<pre> KQ AQPLDDPEAE QLTVVGKISF NPKDVLGRGA GGTFVFRGQF EGRAVAVKRL LRECFGLVRR EVQLLQESDR HPNVLRYFCT ERGPQFHYYA LELCRASLQE YVENPDLDRG GLEPEVVLQQ LMSGLAHLHS LHIVHRDLKP GNILITGPDS QGLGRVVLSD FGLCKKLPAG RCSFSLHSGI PGTEGWMAPE LLQLLPPDSP TSAVDIFSAG CVFYVLSGG SHPFGDSLVR QANILTGAPC LAHLEEEVHD KVVARDLVGA MLSPLQPRP SAPQVLAHPF FWSRAKQLQF FQDVSDWLEK ESEQEPLVRA LEAGGCAVVR DNWHEHISMP LQTDLRKFRS YKGTSVRDLL RAVRNKKHHY REL PVEVRQA LGQVPDGFVQ YFTNRFPRLL LHTHRMRSC ASESFLFPYY PPDSEARRPC PGATGR           </pre>
<b>预测分子量</b>	80 kDa including tags
<b>氨基酸</b>	499 to 926
<b>标签</b>	proprietary tag N-Terminus
<b>额外的序列信息</b>	NM_033266.

#### 技术指标

Our **Abpromise guarantee** covers the use of **ab190994** in the following tested applications.

The application notes include recommended starting dilutions; optimal dilutions/concentrations should be determined by the end user.

<b>应用</b>	Functional Studies SDS-PAGE
<b>形式</b>	Liquid
<b>补充说明</b>	<b>ab64311</b> (Myelin Basic Protein protein) can be utilized as a substrate for assessing kinase activity

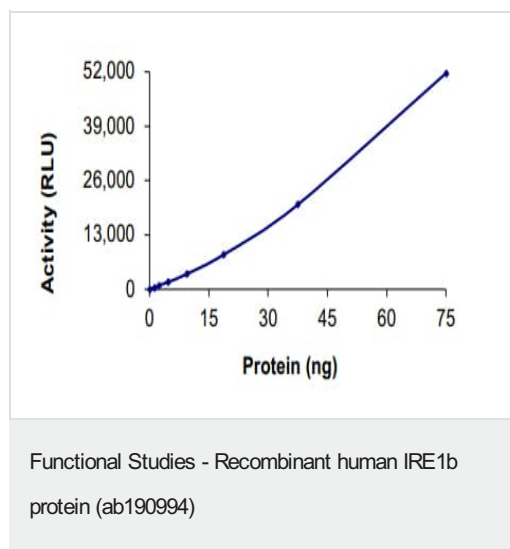
## 制备和贮存

<b>稳定性和存储</b>	Shipped on Dry Ice. Store at -80°C. Avoid freeze / thaw cycle. pH: 7.50 Constituents: 25% Glycerol (glycerin, glycerine), 0.79% Tris HCl, 0.87% Sodium chloride, 0.31% Glutathione, 0.003% EDTA, 0.004% DTT, 0.002% PMSF This product is an active protein and may elicit a biological response in vivo, handle with caution.
---------------	--

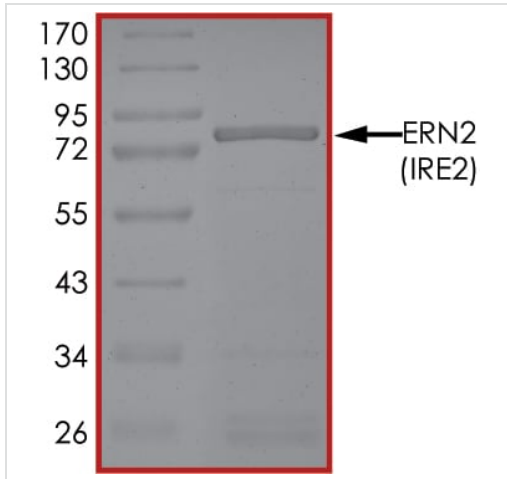
## 常规信息

<b>功能</b>	Induces translational repression through 28S ribosomal RNA cleavage in response to ER stress. Pro-apoptotic. Appears to play no role in the unfolded-protein response, unlike closely related proteins.
<b>序列相似性</b>	Belongs to the protein kinase superfamily. Ser/Thr protein kinase family. Contains 1 KEN domain. Contains 1 protein kinase domain.
<b>翻译后修饰</b>	Autophosphorylated.
<b>细胞定位</b>	Endoplasmic reticulum membrane.

## 图片

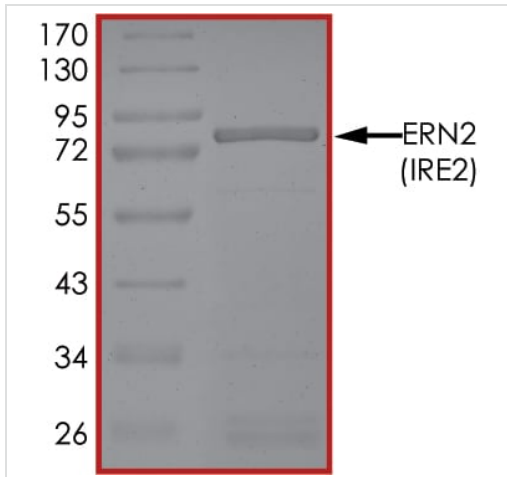


The specific activity of IRE1b (ab190994) was determined to be 2.4 nmol/min/mg as per activity assay protocol and was equivalent to 2.3 nmol/min/mg as per radiometric assay



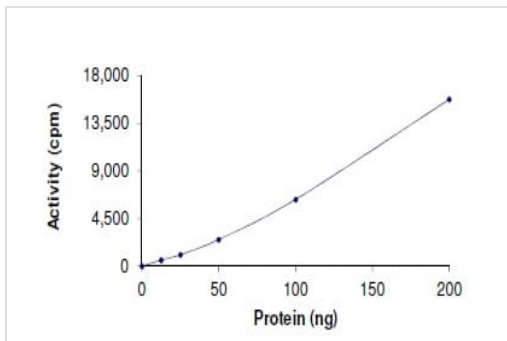
SDS PAGE analysis of ab190994

SDS-PAGE - Recombinant human IRE1b protein (ab190994)



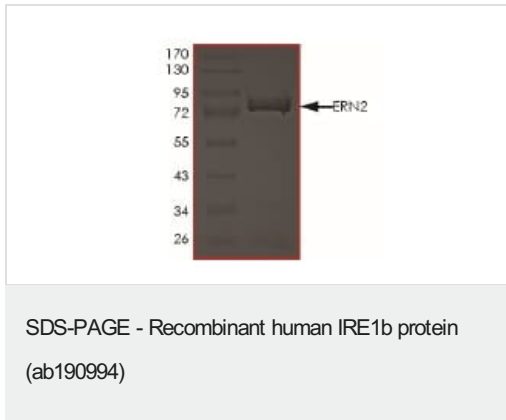
SDS PAGE analysis of ab190994

SDS-PAGE - Recombinant human IRE1b protein (ab190994)



The specific activity of ab190994 was determined to be 2.6 nmol/min/mg.

Functional Studies - Recombinant human IRE1b protein (ab190994)



The purity of ab190994 was determined to be >95% by densitometry, approx MW ~80 kDa.

**Please note:** All products are "FOR RESEARCH USE ONLY. NOT FOR USE IN DIAGNOSTIC PROCEDURES"

### Our Abpromise to you: Quality guaranteed and expert technical support

---

- Replacement or refund for products not performing as stated on the datasheet
- Valid for 12 months from date of delivery
- Response to your inquiry within 24 hours
- We provide support in Chinese, English, French, German, Japanese and Spanish
- Extensive multi-media technical resources to help you
- We investigate all quality concerns to ensure our products perform to the highest standards

If the product does not perform as described on this datasheet, we will offer a refund or replacement. For full details of the Abpromise, please visit <https://www.abcam.cn/abpromise> or contact our technical team.

### Terms and conditions

---

- Guarantee only valid for products bought direct from Abcam or one of our authorized distributors