

# Recombinant human IL-6 protein (Active) ab259381

★★★★★ [1 Abreviews](#) [2 References](#) [5 图像](#)

### 描述

<b>产品名称</b>	重组人IL-6蛋白(Active)
<b>生物活性</b>	Fully biologically active when compared to standard. The ED <sub>50</sub> as determined by the dose-dependant Proliferation of TF-1 cells is 0.8067 ng/mL corresponding to a specific activity of 1.24 x 10 <sup>6</sup> IU/mg.
<b>纯度</b>	>= 95 % SDS-PAGE. Purity by HPLC >=95%.
<b>内毒素水平</b>	< 0.005 Eu/μg
<b>表达系统</b>	HEK 293 cells
<b>Accession</b>	<b><u>P05231</u></b>
<b>蛋白长度</b>	Full length protein
<b>无动物成分</b>	Yes
<b>无载体</b>	是
<b>性质</b>	Recombinant
<b>种属</b>	Human
<b>序列</b>	<pre> APVPPGEDSKDVAAPHRQPLTSSERIDKQIRYILDGISALRK ETCNKSNM CESSKEALAENNLNLPKMAEKDGCQSGFNEETCLVKIITGL LEFEVYLE YLQNRFESSEEQARAVQMSTKVLIIQFLQKKAKNLDAITTPDP TTNASLLT KLQAQNQWLQDMTTHLILRSFKEFLQSSLRALRQM                     </pre>
<b>预测分子量</b>	21 kDa
<b>分子量信息</b>	M+1 Da, pass (+203 Da: Hex, +203: HexNAc, +291:NeuAc).
<b>氨基酸</b>	28 to 212
<b>额外的序列信息</b>	N-terminal glycine. Mature chain.

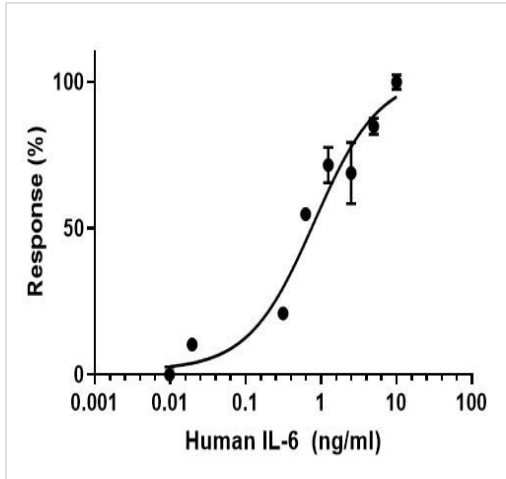
### 技术指标

Our **Abpromise guarantee** covers the use of **ab259381** in the following tested applications.

The application notes include recommended starting dilutions; optimal dilutions/concentrations should be determined by the end user.

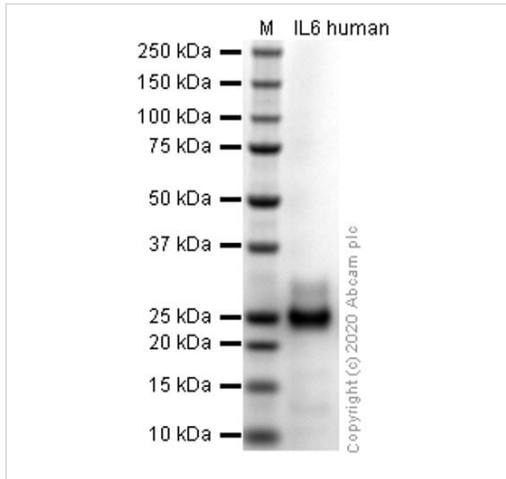
**应用** Cell Culture

	Sandwich ELISA
	Functional Studies
	Mass Spectrometry
	SDS-PAGE
	HPLC
<b>形式</b>	Lyophilized
<b>补充说明</b>	This protein is filter sterilized prior to aliquoting and lyophilization. All aliquoting and lyophilization steps are performed in a sterile environment
<b>制备和贮存</b>	
<b>稳定性和存储</b>	Shipped at Room Temperature. Store at Room Temperature. pH: 6.00 Constituents: 0.727% Dibasic monohydrogen potassium phosphate, 0.248% Monobasic dihydrogen potassium phosphate, 10.26% Trehalose  Buffer lyophilized from.  This product is an active protein and may elicit a biological response in vivo, handle with caution.
<b>复溶</b>	Reconstitute with phosphate buffered saline. Store lyophilized form at room temperature. Reconstitute, aliquot and store at -80°C for 12 months or +4°C for 1 week. Avoid repeated freeze-thaw. Lyophilized contents may appear as either a translucent film or a white powder. This variance does not affect the quality of the product.
<b>常规信息</b>	
<b>功能</b>	Cytokine with a wide variety of biological functions. It is a potent inducer of the acute phase response. Plays an essential role in the final differentiation of B-cells into Ig-secreting cells. Involved in lymphocyte and monocyte differentiation. It induces myeloma and plasmacytoma growth and induces nerve cells differentiation. Acts on B-cells, T-cells, hepatocytes, hematopoietic progenitor cells and cells of the CNS. Also acts as a myokine. It is discharged into the bloodstream after muscle contraction and acts to increase the breakdown of fats and to improve insulin resistance.
<b>疾病相关</b>	Genetic variations in IL6 are associated with susceptibility to rheumatoid arthritis systemic juvenile (RASJ) [MIM:604302]. An inflammatory articular disorder with systemic-onset beginning before the age of 16. It represents a subgroup of juvenile arthritis associated with severe extraarticular features and occasionally fatal complications. During active phases of the disorder, patients display a typical daily spiking fever, an evanescent macular rash, lymphadenopathy, hepatosplenomegaly, serositis, myalgia and arthritis. Note=A IL6 promoter polymorphism is associated with a lifetime risk of development of Kaposi sarcoma in HIV-infected men.
<b>序列相似性</b>	Belongs to the IL-6 superfamily.
<b>翻译后修饰</b>	N- and O-glycosylated.
<b>细胞定位</b>	Secreted.



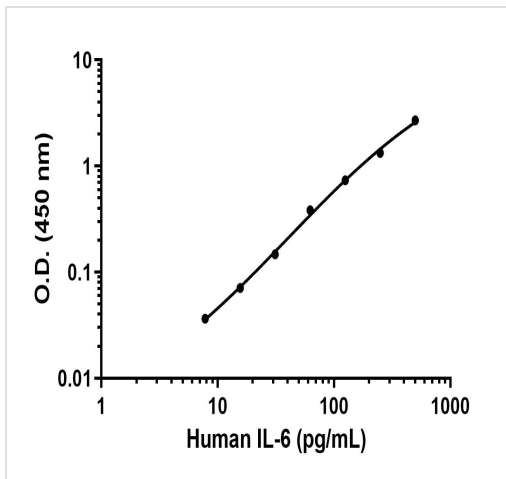
Fully biologically active when compared to standard. The ED<sub>50</sub> as determined by the dose-dependant Proliferation of TF-1 cells is 0.8067 ng/mL corresponding to a specific activity of 1.24 x 10<sup>6</sup> IU/mg.

Functional Studies - Recombinant human IL-6 protein (Active) (ab259381)



SDS-PAGE analysis of ab259381.

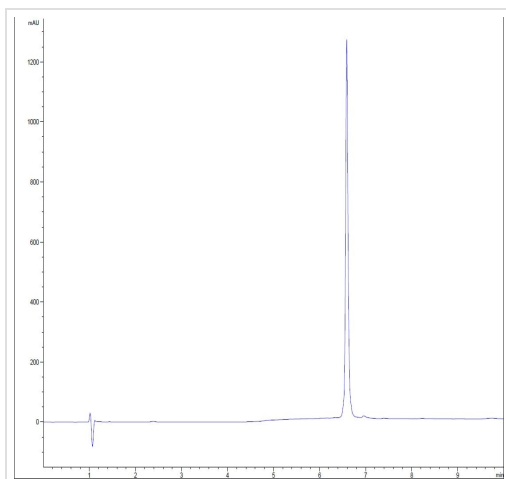
SDS-PAGE - Recombinant human IL-6 protein (Active) (ab259381)



Sandwich ELISA - Recombinant human IL-6 protein (Active) (ab259381)

Sandwich ELISA - Recombinant human IL-6 protein standard curve.

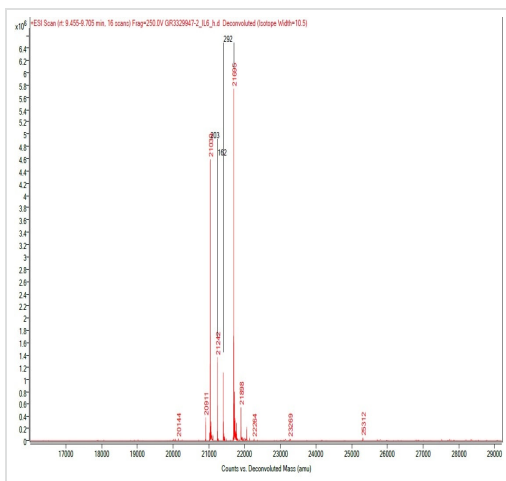
Background subtracted standard curve using Human IL-6 Antibody Pair - BSA and Azide free ([ab243973](#)) and Recombinant human IL-6 protein (Active) (ab259381) in sandwich ELISA. The ELISA was performed using the components of the corresponding SimpleStep® kit, which uses the same antibody pair with a different formulation and format.



HPLC - Recombinant human IL-6 protein (Active) (ab259381)

Purity 99%.

The spectrum was recorded using a 1260 Infinity II HPLC system with DAD and a MabPac RP column (3.0x100 mm, 4 µm). 5 µL of purified protein was injected and the gradient run from 80 % water:TFA (99.9:0.1 v/v) and 20 % acetonitrile:water:TFA (90:9.9:0.1 v/v/v) to 20 % water:TFA (99.9:0.1 v/v) and 80 % acetonitrile:water:TFA (90:9.9:0.1 v/v/v) within 3 minutes followed by an isocratic step for another 3 min. Flow rate was 0.5 mL/min and the column compartment temperature was 50 °C.



Mass Spectrometry - Recombinant human IL-6 protein (Active) (ab259381)

M+1 Da, pass (+203 Da: Hex, +203: HexNAc, +291:NeuAc).

The spectrum was recorded with a 6545XT AdvanceBio LC/Q-TOF (Agilent Technologies) and a MabPac RP column (42.1x50 mm, 4 µm, Thermo Scientific). 5 µL of purified protein was injected and the gradient run from 85 % water:FA (99.9:0.1 v/v) and 15 % acetonitrile:FA (90:9.9:0.1 v/v/v) to 55 % water:FA (99.9:0.1 v/v) and 45 % acetonitrile:FA (90:9.9:0.1 v/v/v) within 3 minutes followed by an isocratic step for another 2.5 min. Flow rate was 0.4 mL/min and the column compartment temperature was 60 °C. Data was analysed and deconvoluted using the Bioconfirm software (Agilent Technologies).

**Please note:** All products are "FOR RESEARCH USE ONLY. NOT FOR USE IN DIAGNOSTIC PROCEDURES"

### **Our Abpromise to you: Quality guaranteed and expert technical support**

---

- Replacement or refund for products not performing as stated on the datasheet
- Valid for 12 months from date of delivery
- Response to your inquiry within 24 hours
  
- We provide support in Chinese, English, French, German, Japanese and Spanish
- Extensive multi-media technical resources to help you
- We investigate all quality concerns to ensure our products perform to the highest standards

If the product does not perform as described on this datasheet, we will offer a refund or replacement. For full details of the Abpromise, please visit <https://www.abcam.cn/abpromise> or contact our technical team.

### **Terms and conditions**

---

- Guarantee only valid for products bought direct from Abcam or one of our authorized distributors