

# Recombinant Human IL-12RB2 protein ab158762

## 1 图像

### 描述

产品名称	重组人IL-12RB2蛋白
表达系统	Wheat germ
蛋白长度	Full length protein
无动物成分	No
性质	Recombinant
种属	Human
序列	

MAHTFRGCSLAFMFIITWLLIKAKIDACKRGDVTVKPSHVIL  
LGSTVNIT  
CSLKPRQGCFFHYSRRNKLILYKFDRRINFHHGHSLSNSQVTGL  
PLGTTLFV  
CKLACINSDEIQICGAEIFVGVAPEQPQNLSCIQKGEQGTVA  
CTWERGRD  
THLYTEYTLQLSGPKNLTWQKQCKDIYCDYLDFGINLTPESP  
ESNFTAKV  
TAVNSLGSSSSLPSTFTFLDIVRPLPPWDIRIKFQKASVSR  
TLYWRDEG  
LVLLNRLRYRPSNSRLWNMVNVTAKGRHDLDDLKPFTEYEF  
QISSKLHL  
YKGSWSDWSESLRAQTPREEPTGMLDVWYMKRHIDYSRQQIS  
LFWKNLSV  
SEARGKILHYQVTLQELTGGKAMTQNITGHTSWTTVIPRTGN  
WAVAVSAA  
NSKGSSLPTRINIMNLCEAGLLAPRQVSANSEGMDNILVTWQ  
PPRKDPSA  
VQEYVVEWRELHPGGDTQVPLNWLRSRPYNVSALISENIKSY  
ICYEIRVY  
ALSGDQGGCSSILGNSKHKAPLSGPHINAITEEKGSILISWN  
SIPVQEQM  
GCLLHYRIYWKERDSNSQPQLCEIPYRVSQNSHPINSLQPRV  
TYVLWMTA  
LTAAGESHGNEREFCLQGKANWMAFVAPSICIAIIMVGIFS  
THYFQQKV  
FVLLAALRPQWCSREIPDPANSTCAKKYPIAEEKTQLPLDRL  
LIDWPTPE  
DPEPLVISEVLHQVTPVFRHPPCSNWPQREKGIQGHQASEKD

MMHSASSP  
PPPRALQAESRQLVDLYKVLVLESRGSDPKPENPACPWTVLPAG  
DLPTHGTY  
LPSNIDDLPSHEAPLADSLEELPQHISLSVFPSSSLHPLTF  
SCGDKLTL DQLKMRCDLML

**氨基酸** 1 to 862  
**标签** GST tag N-Terminus

## 技术指标

---

Our **Abpromise guarantee** covers the use of **ab158762** in the following tested applications.

The application notes include recommended starting dilutions; optimal dilutions/concentrations should be determined by the end user.

**应用** Western blot  
ELISA  
**形式** Liquid  
**补充说明**

## 制备和贮存

---

**稳定性和存储** Shipped on dry ice. Upon delivery aliquot and store at -80°C. Avoid freeze / thaw cycles.  
pH: 8.00  
Constituents: 0.31% Glutathione, 0.79% Tris HCl

## 常规信息

---

**功能** Receptor for interleukin-12. This subunit is the signaling component coupling to the JAK2/STAT4 pathway. Promotes the proliferation of T-cells as well as NK cells. Induces the promotion of T-cells towards the Th1 phenotype by strongly enhancing IFN-gamma production.

**组织特异性** Isoform 2 is expressed at similar levels in both naive and activated T-cells.

**序列相似性** Belongs to the type I cytokine receptor family. Type 2 subfamily.  
Contains 5 fibronectin type-III domains.

**发展阶段** Maximum levels in Th1 cells between day 3 and day 8 of activation.

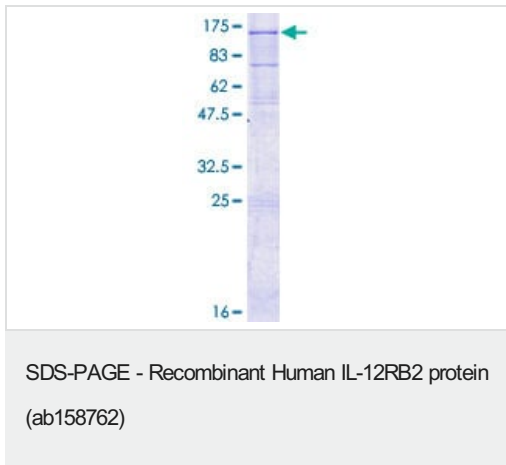
**结构域** The WSXWS motif appears to be necessary for proper protein folding and thereby efficient intracellular transport and cell-surface receptor binding.  
The box 1 motif is required for JAK interaction and/or activation.

**翻译后修饰** On IL12 binding, phosphorylated on C-terminal tyrosine residues by JAK2. Phosphorylation on Tyr-800 is required for STAT4 binding and activation, and for SOCS3 binding.

**细胞定位** Membrane.

## 图片

---



ab158762 on a 12.5% SDS-PAGE stained with Coomassie Blue.

**Please note:** All products are "FOR RESEARCH USE ONLY. NOT FOR USE IN DIAGNOSTIC PROCEDURES"

### Our Abpromise to you: Quality guaranteed and expert technical support

---

- Replacement or refund for products not performing as stated on the datasheet
- Valid for 12 months from date of delivery
- Response to your inquiry within 24 hours
  
- We provide support in Chinese, English, French, German, Japanese and Spanish
- Extensive multi-media technical resources to help you
- We investigate all quality concerns to ensure our products perform to the highest standards

If the product does not perform as described on this datasheet, we will offer a refund or replacement. For full details of the Abpromise, please visit <https://www.abcam.cn/abpromise> or contact our technical team.

### Terms and conditions

---

- Guarantee only valid for products bought direct from Abcam or one of our authorized distributors