

Recombinant human IKKi/IKKe protein ab201367

[1 References](#) [5 图像](#)

描述

产品名称	重组人IKKi/IKKe蛋白
生物活性	The specific activity of ab201367 was determined to be 12 nmol/min/mg as determined by kinase assay.
纯度	> 70 % Densitometry. Affinity purified.
表达系统	Baculovirus infected Sf9 cells
Accession	<u>NM_014002</u>
蛋白长度	Full length protein
无动物成分	No
性质	Recombinant
种属	Human
序列	<pre> MQSTANYLWHTDDLLGQGATASVYKARNKKSGELVAVKVFNT TSYLRPRE VQVREFEVLRLKLNHQIIVKLFVEETGGSRQKVLVMEYCSSG SLLSVLES PENAFGLPEDEFLVVLRCVVAGMNLRENGIVHRDIKPGNIM RLVGEEGQ SIYKLTDFGAARELDDDEKFVSVYGTEEYLHPDMYERAVLRK PQKAFGV TVDLWSIGVTLYHAATGSLPFIPFGGPRRNKEIMYRITTEKP AGAIAGAQ RRENGPLEWSYTLPTCQLSLGLQSQLVPILANILEVEQAKC WGFQFFA ETSDILQRVVVHVFSLSQAVLHHIYIHAHNTIAIFQEAVHKQ TSVAPRHQ EYLFEGHLCVLEPSVSAQHIAHTTASSPLTLFSTAIPKGLAF RDPALDVP KFVPKVDLQADYNTAKGVLGAGYQALRLARALLDQGELMFRG LHWVMEVL QATCRRTLEVARTSLLYLSSSLGTERFSSVAGTPEIQELKAA AELRSRLR TLAEVLSRCSQNITETQESLSSLNRELVKSRDQVHEDRSIQQ IQCCLDKM NFIYKQFKKSRMRPGLGYNEEQIHKLDKVNFSHLAKRLLQVF </pre>

QEECVQKY
QASLVTHGKMRVHVHETRNHLRLVGCSVAACNTEAQGVQESL
SKLLEELS
HQLLQDRAKGAQASPPPIAPYPSPTRKDLLLHMQLCEGMKL
LASDLLDN NRIERLNRVPAPPDV

预测分子量 110 kDa including tags
氨基酸 1 to 716
标签 GST tag N-Terminus

技术指标

Our **Abpromise guarantee** covers the use of **ab201367** in the following tested applications.

The application notes include recommended starting dilutions; optimal dilutions/concentrations should be determined by the end user.

应用 SDS-PAGE
Functional Studies

形式 Liquid

补充说明 **ab204863** (IKB alpha peptide) can be utilized as a substrate for assessing kinase activity

制备和贮存

稳定性和存储 Shipped on Dry Ice. Store at -80°C. Avoid freeze / thaw cycle.
pH: 7.50
Constituents: 0.79% Tris HCl, 0.87% Sodium chloride, 0.31% Glutathione, 0.003% EDTA, 0.004% DTT, 0.002% PMSF
This product is an active protein and may elicit a biological response in vivo, handle with caution.

常规信息

功能 Phosphorylates inhibitors of NF-kappa-B thus leading to the dissociation of the inhibitor/NF-kappa-B complex and ultimately the degradation of the inhibitor. May play a special role in the immune response. Protects cells against DNA damage-induced cell death.

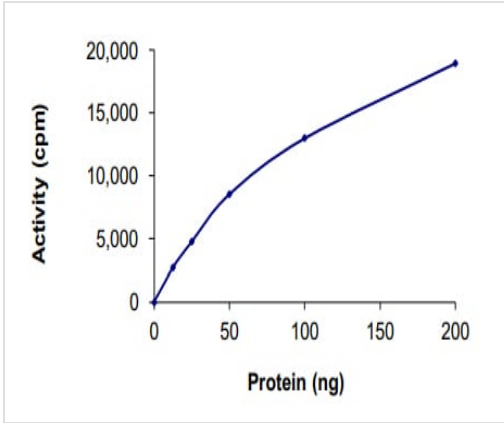
组织特异性 Highly expressed in spleen followed by thymus, peripheral blood leukocytes, pancreas, placenta. Weakly expressed in lung, kidney, prostate, ovary and colon.

序列相似性 Belongs to the protein kinase superfamily. Ser/Thr protein kinase family. I-kappa-B kinase subfamily.
Contains 1 protein kinase domain.

翻译后修饰 Autophosphorylated.
Sumoylation by TOPORS upon DNA damage is required for protection of cells against DNA damage-induced cell death. Desumoylated by SENP1.

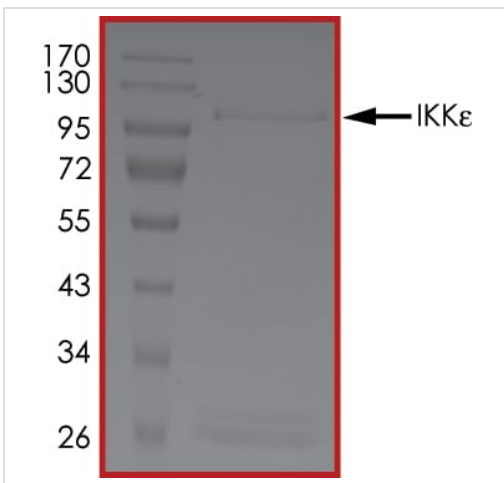
细胞定位 Cytoplasm. Nucleus. Nucleus > PML body. Targeting to PML nuclear bodies upon DNA damage is TOPORS-dependent.

图片



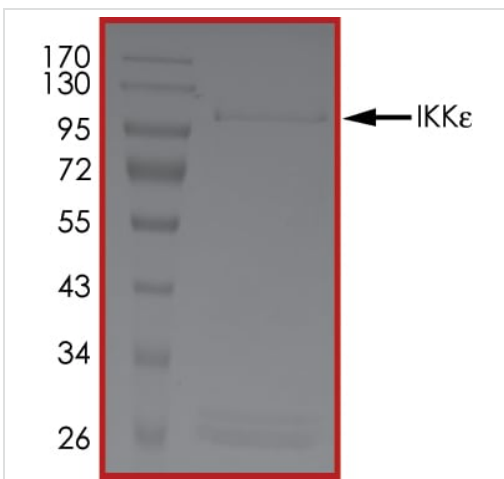
The specific activity of IKKi/IKKe (ab201367) was determined to be 11 nmol/min/mg as per activity assay protocol

Functional Studies - Recombinant human IKKi/IKKe protein (ab201367)



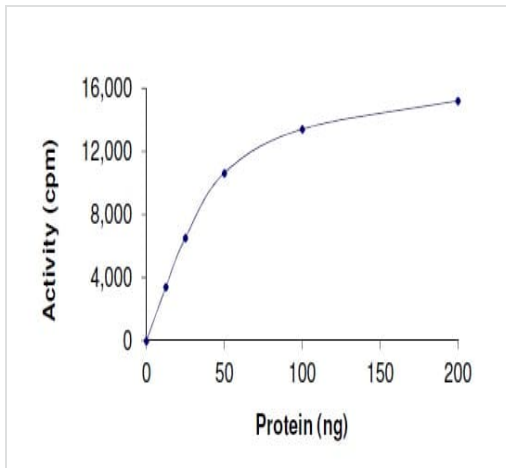
SDS PAGE analysis of ab201367

SDS-PAGE - Recombinant human IKKi/IKKe protein (ab201367)



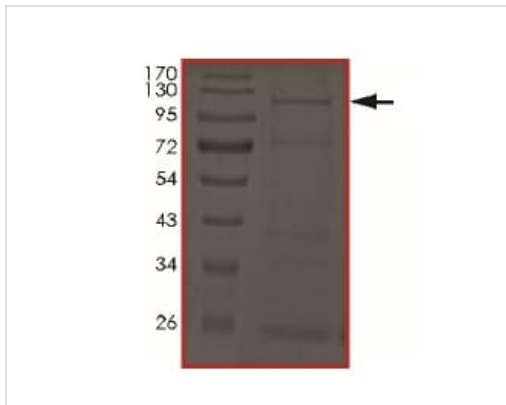
SDS PAGE analysis of ab201367

SDS-PAGE - Recombinant human IKKi/IKKe protein (ab201367)



Specific activity of ab201367

Functional Studies - Recombinant human IKKi/IKKe protein (ab201367)



SDS PAGE analysis of ab201367

SDS-PAGE - Recombinant human IKKi/IKKe protein (ab201367)

Please note: All products are "FOR RESEARCH USE ONLY. NOT FOR USE IN DIAGNOSTIC PROCEDURES"

Our Abpromise to you: Quality guaranteed and expert technical support

- Replacement or refund for products not performing as stated on the datasheet
- Valid for 12 months from date of delivery
- Response to your inquiry within 24 hours
- We provide support in Chinese, English, French, German, Japanese and Spanish
- Extensive multi-media technical resources to help you
- We investigate all quality concerns to ensure our products perform to the highest standards

If the product does not perform as described on this datasheet, we will offer a refund or replacement. For full details of the Abpromise, please visit <https://www.abcam.cn/abpromise> or contact our technical team.

Terms and conditions

- Guarantee only valid for products bought direct from Abcam or one of our authorized distributors