

Recombinant Human HEC1/HEC protein ab131907

1 图像

描述

产品名称	重组人HEC1/HEC蛋白	
表达系统	Wheat germ	
Accession	<u>Q14777</u>	
蛋白长度	Full length protein	
无动物成分	No	
性质	Recombinant	
种属	Human	
序列		MKRSSVSSGGAGRLSMQELRSQDVNKQGLYTPQTKEKPTFGK LSINKPTS ERKVSLFGKRTSGHGSRNSQLGIFSSSEKIKDPRPLNDKAFI QQCIRQLC EFLTENGYAHNVSMKSLQAPSVKDFLKIIFTFLYGLFCPSYEL PDKFEEE VPRIFKDLGYPFALS KSSMYTVGAPHTWPHIVAALVWLIDCI KIHTAMKE SSPLFDDGQPWGEETEDGIMHNKLF LDYTIKCYESFMSGADS FDEMNAEL QSKLKDLFNVD AFKLESLEAKNRALNEQIARLEQEREKEPNR LESLRKLK ASLQGDVQKYQAYMSNLESHSAILDQKL NGLNEEIARVELEC ETIKQENT RLQNIIDNQKYSVADIERINHERNELQQTINKLTKDLEAEQQ KLWNEELK YARGKEAIETQLAEYHKLARKLKLIPKGAENSKGYDFEIKFN PEAGANCL VKYRAQVYVPLKELLNETEEEINKALNKKMGLEDTLEQLNAM ITESKRSV RTLKEEVQK LDDLYQQKIKEAEEEDEKCASELESLEKHKHLL ESTVNQGL SEAMNELDAVQREYQLVVQTTTEERRKVGNNLQRLLEMVATH VGSVEKHL EEQIAKVDREYEECMS EDLSENIKEIRDKYEKKATLIKSSEE
预测分子量	100 kDa including tags	
氨基酸	1 to 642	

技术指标

Our **Abpromise guarantee** covers the use of **ab131907** in the following tested applications.

The application notes include recommended starting dilutions; optimal dilutions/concentrations should be determined by the end user.

应用	Western blot
	SDS-PAGE
	ELISA
形式	Liquid
补充说明	This product was previously labelled as HEC1.

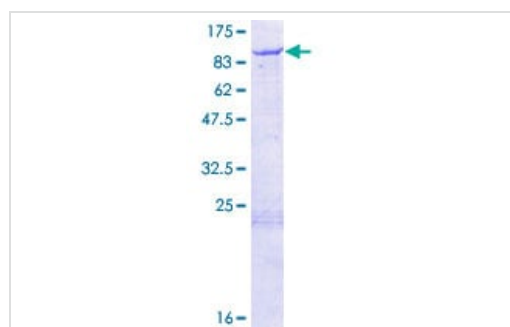
制备和贮存

稳定性和存储	Shipped on dry ice. Upon delivery aliquot and store at -80°C. Avoid freeze / thaw cycles. pH: 8.00 Constituents: 0.31% Glutathione, 0.79% Tris HCl
--------	--

常规信息

功能	Acts as a component of the essential kinetochore-associated NDC80 complex, which is required for chromosome segregation and spindle checkpoint activity. Required for kinetochore integrity and the organization of stable microtubule binding sites in the outer plate of the kinetochore.
序列相似性	Belongs to the NDC80/HEC1 family.
发展阶段	Expression peaks in mitosis.
翻译后修饰	Phosphorylation begins in S phase of the cell cycle and peaks in mitosis. Phosphorylated by NEK2. May also be phosphorylated by AURKA and AURKB.
细胞定位	Nucleus. Chromosome > centromere > kinetochore. Localizes to kinetochores from late prophase to anaphase. Localizes specifically to the outer plate of the kinetochore.

图片



12.5% SDS-PAGE analysis of ab131907 stained with Coomassie Blue.

SDS-PAGE - Recombinant Human HEC1/HEC1 protein (ab131907)

Please note: All products are "FOR RESEARCH USE ONLY. NOT FOR USE IN DIAGNOSTIC PROCEDURES"

Our Abpromise to you: Quality guaranteed and expert technical support

- Replacement or refund for products not performing as stated on the datasheet
- Valid for 12 months from date of delivery
- Response to your inquiry within 24 hours

- We provide support in Chinese, English, French, German, Japanese and Spanish
- Extensive multi-media technical resources to help you
- We investigate all quality concerns to ensure our products perform to the highest standards

If the product does not perform as described on this datasheet, we will offer a refund or replacement. For full details of the Abpromise, please visit <https://www.abcam.cn/abpromise> or contact our technical team.

Terms and conditions

- Guarantee only valid for products bought direct from Abcam or one of our authorized distributors