

# Recombinant Human GPR2/CCR10 protein ab131829

### 1 图像

#### 描述

<b>产品名称</b>	重组人GPR2/CCR10蛋白	
<b>表达系统</b>	Wheat germ	
<b>Accession</b>	<b><u>P46092</u></b>	
<b>蛋白长度</b>	Full length protein	
<b>无动物成分</b>	No	
<b>性质</b>	Recombinant	
<b>种属</b>	Human	
<b>序列</b>		MGTEATEQVSWGHYSGDEEDAYS AEPLPELCYKADVQAFSRA FQPSVSLT VAALGLAGNGLVLATHLAARRAARSPTSAHLLQLALADLLLA LTLPFAAA GALQGWSLGSATCRTISGLYSASFHAGFLFLACISADRYVAI ARALPAGP RPSTPGRAHLVSVI VWLLSLLLALPALLFSQDGQREGQRRCR LIFPEGLT QTVKGASAVAQVALGFALPLGVMVACYALLGRTLLAARGPER RRALRVVV ALVAAFVVLQLPYSLALLLDTADLLAARERSCPASKRKDVAL LVTSGLAL ARCGLNPVLYAFLGLRFRQDLRRLLRGGSCPSGPQPRRGCP RPRLSSCS APTETHSLSWDN
<b>预测分子量</b>	65 kDa including tags	
<b>氨基酸</b>	1 to 362	

#### 技术指标

Our **Abpromise guarantee** covers the use of **ab131829** in the following tested applications.

The application notes include recommended starting dilutions; optimal dilutions/concentrations should be determined by the end user.

<b>应用</b>	ELISA
	Western blot
	SDS-PAGE
<b>形式</b>	Liquid

## 制备和贮存

### 稳定性和存储

Shipped on dry ice. Upon delivery aliquot and store at -80°C. Avoid freeze / thaw cycles.

pH: 8.00

Constituents: 0.31% Glutathione, 0.79% Tris HCl

## 常规信息

### 功能

Receptor for chemokines SCYA27 and SCYA28. Subsequently transduces a signal by increasing the intracellular calcium ions level and stimulates chemotaxis in a pre-B cell line.

### 组织特异性

Expressed at high levels in adult testis, small intestine, fetal lung, fetal kidney. Weaker expression was observed in many other adult tissues including spleen, thymus, lymph node, Peyer patches, colon, heart, ovary, peripheral blood lymphocytes, thyroid and spinal cord. Also expressed by melanocytes, dermal fibroblasts, dermal microvascular endothelial cells. Also detected in T-cells and in skin-derived Langerhans cells.

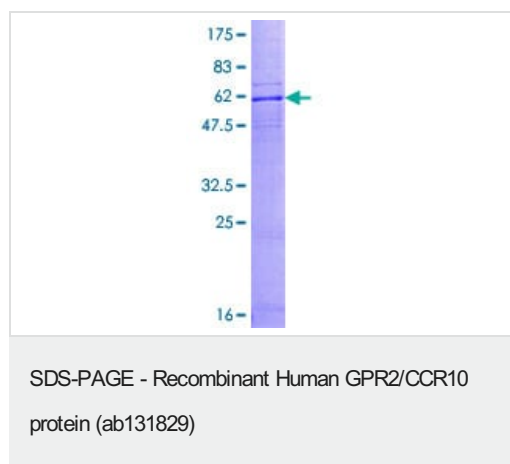
### 序列相似性

Belongs to the G-protein coupled receptor 1 family.

### 细胞定位

Cell membrane.

## 图片



12.5% SDS-PAGE analysis of ab131829 stained with Coomassie Blue.

**Please note:** All products are "FOR RESEARCH USE ONLY. NOT FOR USE IN DIAGNOSTIC PROCEDURES"

## Our Abpromise to you: Quality guaranteed and expert technical support

- Replacement or refund for products not performing as stated on the datasheet
- Valid for 12 months from date of delivery
- Response to your inquiry within 24 hours
- We provide support in Chinese, English, French, German, Japanese and Spanish
- Extensive multi-media technical resources to help you
- We investigate all quality concerns to ensure our products perform to the highest standards

If the product does not perform as described on this datasheet, we will offer a refund or replacement. For full details of the Abpromise,

please visit <https://www.abcam.cn/abpromise> or contact our technical team.

## **Terms and conditions**

---

- Guarantee only valid for products bought direct from Abcam or one of our authorized distributors