

# Recombinant Human GluA4 protein ab152441

1 References 1 图像

描述	
产品名称	重组人GluA4蛋白
表达系统	Wheat germ
Accession	<u>P48058-2</u>
蛋白长度	Full length protein
无动物成分	No
性质	Recombinant
种属	Human
序列	MRIISRQIVLLFSGFWGLAMGAFPSSVQIGGLFIRNTDQEYT AFRLAIFL HNTSPNASEAPFNLVPHVDNIETANSFAVTNAFCSQYSRGVF AIFGLYDK RSVHTLTSFCSALHISLITPSFPTEGESQFVLQLRPSLRGAL LSLLDHYE WNCFVFLYDTRGYSILQAIMEKAGQNGWHVSAICVENFNDV SYRQLLEE LDRRQEKKFVIDCEIERLQNILEQIVSVGKHVKGYHYIIANL GFKDISLE RFIHGGANVTGFQLVDFNTPMVIKLMDRWKKLDQREYPGSET PPKYTSAL TYDGVLVMAETFRSLRRQKIDISRRGNAGDCLANPAAPWGQG IDMERTLK QVRIQGLTGNVQFDHYGRRVNYTMDVFELKSTGPRKVGWYND MDKLVLIIQ DVPTLGNDTAAIENRTVVVTTIMPLMKNPILRN
预测分子量	76 kDa including tags
氨基酸	1 to 433
标签	GST tag N-Terminus
额外的序列信息	This is Isoform 2 of Glutamte Receptor 4

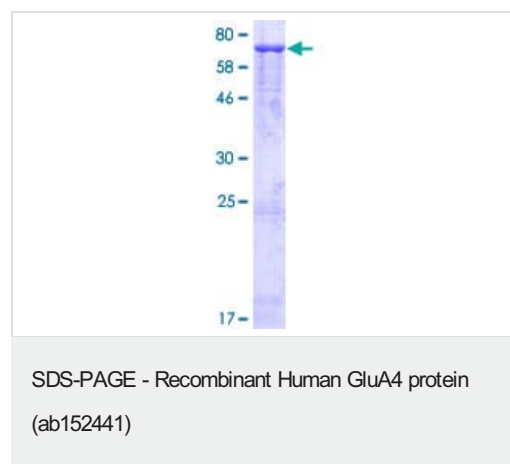
技术指标

Our **Abpromise guarantee** covers the use of **ab152441** in the following tested applications.

The application notes include recommended starting dilutions; optimal dilutions/concentrations should be determined by the end user.

应用	Western blot
	ELISA
	SDS-PAGE
形式	Liquid
补充说明	This product was previously labelled as Ionotropic Glutamate receptor 4.
<b>制备和贮存</b>	
稳定性和存储	Shipped on dry ice. Upon delivery aliquot and store at -80°C. Avoid freeze / thaw cycles.
	pH: 8.00
	Constituents: 0.31% Glutathione, 0.79% Tris HCl
<b>常规信息</b>	
功能	Ionotropic glutamate receptor. L-glutamate acts as an excitatory neurotransmitter at many synapses in the central nervous system. Binding of the excitatory neurotransmitter L-glutamate induces a conformation change, leading to the opening of the cation channel, and thereby converts the chemical signal to an electrical impulse. The receptor then desensitizes rapidly and enters a transient inactive state, characterized by the presence of bound agonist.
序列相似性	Belongs to the glutamate-gated ion channel (TC 1.A.10.1) family. GRIA4 subfamily.
翻译后修饰	Palmitoylated. Depalmitoylated upon glutamate stimulation. Cys-611 palmitoylation leads to Golgi retention and decreased cell surface expression. In contrast, Cys-837 palmitoylation does not affect cell surface expression but regulates stimulation-dependent endocytosis.
细胞定位	Cell membrane. Cell junction > synapse > postsynaptic cell membrane.

## 图片



12.5% SDS-PAGE analysis of ab152441 stained with Coomassie Blue.

**Please note:** All products are "FOR RESEARCH USE ONLY. NOT FOR USE IN DIAGNOSTIC PROCEDURES"

### **Our Abpromise to you: Quality guaranteed and expert technical support**

---

- Replacement or refund for products not performing as stated on the datasheet
- Valid for 12 months from date of delivery
- Response to your inquiry within 24 hours
  
- We provide support in Chinese, English, French, German, Japanese and Spanish
- Extensive multi-media technical resources to help you
- We investigate all quality concerns to ensure our products perform to the highest standards

If the product does not perform as described on this datasheet, we will offer a refund or replacement. For full details of the Abpromise, please visit <https://www.abcam.cn/abpromise> or contact our technical team.

### **Terms and conditions**

---

- Guarantee only valid for products bought direct from Abcam or one of our authorized distributors