

# Recombinant Human GAPDH protein (His tag) ab223103

## 1 图像

### 描述

<b>产品名称</b>	重组人GAPDH蛋白(His tag)
<b>纯度</b>	> 95 % SDS-PAGE.
<b>内毒素水平</b>	< 1.000 Eu/μg
<b>表达系统</b>	Escherichia coli
<b>Accession</b>	<b><u>P04406</u></b>
<b>蛋白长度</b>	Full length protein
<b>无动物成分</b>	No
<b>性质</b>	Recombinant
<b>种属</b>	Human
<b>序列</b>	<p>GKVKVGVNGFGRIGRLVTRAAFNSGKVDIVAINDPFIDLNYM  VYMFQYDS  THGKFHGTVKAENGLVINGNPITIFQERDPSKIKWGDAGAE  YVVESTGV  FTTMEKAG AHLQGGAKRVIISAPSADAPMFVMGVNHEKYDNS  LKIISNAS  CTTNCLAPLAKVIHDNFGIVEGLMTTVHAITATQKTVDGPSG  KLWRDGRG  ALQNIIPASTGAAKAVGKVIPELNGKLTGMAFRVPTANVSVV  DLTCRLEK  PAKYDDIKKVVKQASEGPLKGILGYTEHQVVSSDFNSDTHSS  TFDAGAGI  ALNDHFVKLISWYDNEFGYSNRVVDLMAHMASKE</p>
<b>预测分子量</b>	37 kDa including tags
<b>氨基酸</b>	2 to 335
<b>标签</b>	His tag N-Terminus
<b>额外的序列信息</b>	AAH01601.

### 技术指标

Our **Abpromise guarantee** covers the use of **ab223103** in the following tested applications.

The application notes include recommended starting dilutions; optimal dilutions/concentrations should be determined by the end user.

**应用** SDS-PAGE

**形式** Lyophilized

### 制备和贮存

**稳定性和存储** Shipped at 4°C. Store at -20°C or -80°C. Avoid freeze / thaw cycle.

pH: 7.4

Constituents: 0.87% Sodium chloride, 5% Trehalose, 0.61% Tris

Lyophilized from 0.22 µm filtered solution.

**复溶** Reconstitute with sterile deionized water to a concentration of 400 µg/ml.

### 常规信息

**功能** Has both glyceraldehyde-3-phosphate dehydrogenase and nitrosylase activities, thereby playing a role in glycolysis and nuclear functions, respectively. Participates in nuclear events including transcription, RNA transport, DNA replication and apoptosis. Nuclear functions are probably due to the nitrosylase activity that mediates cysteine S-nitrosylation of nuclear target proteins such as SIRT1, HDAC2 and PRKDC (By similarity). Glyceraldehyde-3-phosphate dehydrogenase is a key enzyme in glycolysis that catalyzes the first step of the pathway by converting D-glyceraldehyde 3-phosphate (G3P) into 3-phospho-D-glyceroyl phosphate.

**通路** Carbohydrate degradation; glycolysis; pyruvate from D-glyceraldehyde 3-phosphate: step 1/5.

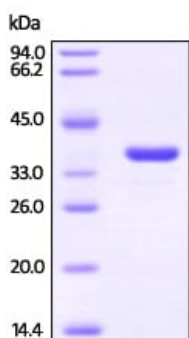
**序列相似性** Belongs to the glyceraldehyde-3-phosphate dehydrogenase family.

**翻译后修饰** S-nitrosylation of Cys-152 leads to interaction with SIAH1, followed by translocation to the nucleus.

ISGylated.

**细胞定位** Cytoplasm > cytosol. Nucleus. Cytoplasm > perinuclear region. Membrane. Translocates to the nucleus following S-nitrosylation and interaction with SIAH1, which contains a nuclear localization signal (By similarity). Postnuclear and Perinuclear regions.

### 图片



ab223103 analyzed by DTT-reduced SDS-PAGE and stained overnight with Coomassie Blue.

DTT-reduced protein migrates as 37 kDa in SDS-PAGE.

SDS-PAGE - Recombinant Human GAPDH protein  
(His tag) (ab223103)

**Please note:** All products are "FOR RESEARCH USE ONLY. NOT FOR USE IN DIAGNOSTIC PROCEDURES"

### **Our Abpromise to you: Quality guaranteed and expert technical support**

---

- Replacement or refund for products not performing as stated on the datasheet
- Valid for 12 months from date of delivery
- Response to your inquiry within 24 hours
  
- We provide support in Chinese, English, French, German, Japanese and Spanish
- Extensive multi-media technical resources to help you
- We investigate all quality concerns to ensure our products perform to the highest standards

If the product does not perform as described on this datasheet, we will offer a refund or replacement. For full details of the Abpromise, please visit <https://www.abcam.cn/abpromise> or contact our technical team.

### **Terms and conditions**

---

- Guarantee only valid for products bought direct from Abcam or one of our authorized distributors