

# Recombinant human FKBP12 protein ab85840

## 1 References [1 图像](#)

### 描述

|              |  |
|--------------|--|
| <b>产品名称</b>  | 重组人FKBP12蛋白  |
| <b>生物活性</b>  | Specific activity is > 800nmol/min/mg, and is defined as the amount of enzyme that cleaves 1nmole of suc-AAPF-pNA per minute at 37C in Tris-HCl pH 8.0 using chymotrypsin. |
| <b>纯度</b>    | > 95 % SDS-PAGE.<br>ab85840 is purified using conventional chromatography. Endotoxin Level: < 1.0 EU per 1 µg of protein (determined by LAL method).                       |
| <b>内毒素水平</b> | < 1.000 Eu/µg  |
| <b>表达系统</b>  | Escherichia coli   |
| <b>蛋白长度</b>  | Full length protein  |
| <b>无动物成分</b> | No   |
| <b>性质</b>    | Recombinant  |
| <b>种属</b>    | Human  |
| <b>序列</b>    | MGSSHHHHHH SGLVPRGSH MGVQVETISP<br>GDGRTFPKRG QTCVVHYTGM LEDGKKFDSS<br>RDRNKPFKFM LGKQEVIRGW EEGVAQMSVG<br>QRAKLTISPD YAYGATGHPG IIPPHATLVF DVELLKLE                       |
| <b>标签</b>    | His tag N-Terminus   |

### 技术指标

Our **Abpromise guarantee** covers the use of **ab85840** in the following tested applications.

The application notes include recommended starting dilutions; optimal dilutions/concentrations should be determined by the end user.

|            |                                |
|------------|--------------------------------|
| <b>应用</b>  | SDS-PAGE<br>Functional Studies |
| <b>质谱法</b> | MALDI-TOF                      |
| <b>形式</b>  | Liquid                         |

### 制备和贮存

|               |   |
|---------------|---|
| <b>稳定性和存储</b> | Shipped at 4°C. Upon delivery aliquot and store at -20°C or -80°C. Avoid repeated freeze / thaw cycles. |
|---------------|---|

pH: 8.00

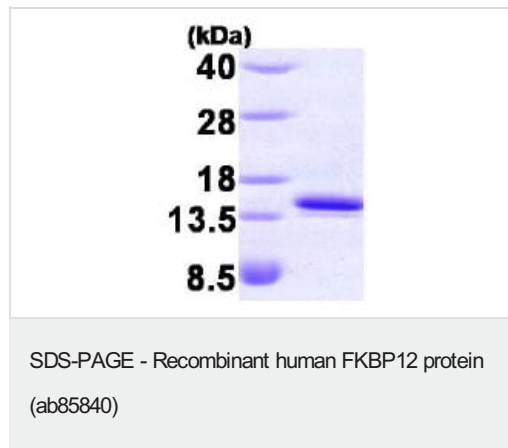
Constituents: 0.0154% DTT, 0.316% Tris HCl, 10% Glycerol, 0.58% Sodium chloride

This product is an active protein and may elicit a biological response in vivo, handle with caution.

## 常规信息

|       |   |
|-------|---|
| 功能    | May play a role in modulation of ryanodine receptor isoform-1 (RYR-1), a component of the calcium release channel of skeletal muscle sarcoplasmic reticulum. There are four molecules of FKBP12 per skeletal muscle RYR. PPlases accelerate the folding of proteins. It catalyzes the cis-trans isomerization of proline imidic peptide bonds in oligopeptides. |
| 序列相似性 | Belongs to the FKBP-type PPlase family. FKBP1 subfamily.<br>Contains 1 PPlase FKBP-type domain.   |
| 细胞定位  | Cytoplasm.  |

## 图片



15% SDS-PAGE showing ab85840 at approximately 14.1kDa (3 $\mu$ g).

**Please note:** All products are "FOR RESEARCH USE ONLY. NOT FOR USE IN DIAGNOSTIC PROCEDURES"

## Our Abpromise to you: Quality guaranteed and expert technical support

- Replacement or refund for products not performing as stated on the datasheet
- Valid for 12 months from date of delivery
- Response to your inquiry within 24 hours
- We provide support in Chinese, English, French, German, Japanese and Spanish
- Extensive multi-media technical resources to help you
- We investigate all quality concerns to ensure our products perform to the highest standards

If the product does not perform as described on this datasheet, we will offer a refund or replacement. For full details of the Abpromise, please visit <https://www.abcam.cn/abpromise> or contact our technical team.

## Terms and conditions

- Guarantee only valid for products bought direct from Abcam or one of our authorized distributors