

Recombinant Human Fibrillarin protein ab99443

1 图像

描述	
产品名称	重组人Fibrillarin蛋白
纯度	>= 85 % SDS-PAGE. ab99443 is purified using conventional chromatography techniques.
表达系统	Escherichia coli
Accession	<b><u>P22087</u></b>
蛋白长度	Protein fragment
无动物成分	No
性质	Recombinant
种属	Human
序列	<b>MGSSHHHHHSSGLVPRGSHRSMGKNMVEPHRHEGVFIC RGKEDALVTK NLVPGESVYGEKRVSISEGDDKIEYRAWNPFRSKLAAAILGG VDQIHIKP GAKVLYLGAASGTTVSHVSDIVGPDGLVYAVEFSHRSGRDLI NLAKKRTN IIPVIEDARHPHKYRMLIAMVDVIFADVAQPDQTRIVALNAH TFLRNGGH FVISIKANCIDSTASAEAVFASEVKKMQENMKPQEQLTLEP YERDHAVV VGVYRPPPKVKN</b>
预测分子量	29 kDa including tags
氨基酸	83 to 321
标签	His tag N-Terminus

技术指标	
Our <b>Abpromise guarantee</b> covers the use of <b>ab99443</b> in the following tested applications.	
The application notes include recommended starting dilutions; optimal dilutions/concentrations should be determined by the end user.	
应用	SDS-PAGE Mass Spectrometry
质谱法	MALDI-TOF
形式	Liquid

## 制备和贮存

### 稳定性和存储

Shipped at 4°C. Upon delivery aliquot and store at -20°C or -80°C. Avoid repeated freeze / thaw cycles.

pH: 7.4

Constituents: 0.0154% DTT, 0.316% Tris HCl, 0.0292% EDTA, 20% Glycerol (glycerin, glycerine), 1.16% Sodium chloride

## 常规信息

### 功能

S-adenosyl-L-methionine-dependent methyltransferase that has the ability to methylate both RNAs and proteins. Involved in pre-rRNA processing by catalyzing the site-specific 2'-hydroxyl methylation of ribose moieties in pre-ribosomal RNA. Site specificity is provided by a guide RNA that base pairs with the substrate. Methylation occurs at a characteristic distance from the sequence involved in base pairing with the guide RNA. Also acts as a protein methyltransferase by mediating methylation of 'Gln-105' of histone H2A (H2AQ104me), a modification that impairs binding of the FACT complex and is specifically present at 35S ribosomal DNA locus (PubMed:24352239).

### 序列相似性

Belongs to the methyltransferase superfamily. Fibrillarin family.

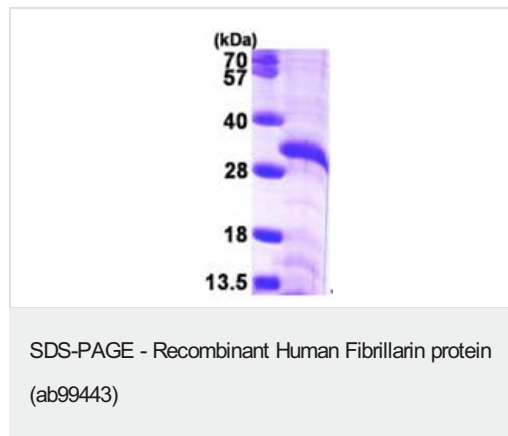
### 翻译后修饰

By homology to other fibrillarins, some or all of the N-terminal domain arginines are modified to asymmetric dimethylarginine (DMA).

### 细胞定位

Nucleus, nucleolus. Fibrillar region of the nucleolus.

## 图片



15% SDS-PAGE showing ab99443 at approximately 28.9kDa (3μg).

**Please note:** All products are "FOR RESEARCH USE ONLY. NOT FOR USE IN DIAGNOSTIC PROCEDURES"

## Our Abpromise to you: Quality guaranteed and expert technical support

- Replacement or refund for products not performing as stated on the datasheet
- Valid for 12 months from date of delivery
- Response to your inquiry within 24 hours

- We provide support in Chinese, English, French, German, Japanese and Spanish
- Extensive multi-media technical resources to help you
- We investigate all quality concerns to ensure our products perform to the highest standards

If the product does not perform as described on this datasheet, we will offer a refund or replacement. For full details of the Abpromise, please visit <https://www.abcam.cn/abpromise> or contact our technical team.

#### **Terms and conditions**

---

- Guarantee only valid for products bought direct from Abcam or one of our authorized distributors