

Recombinant human FGF2 protein ab61845

3 图像

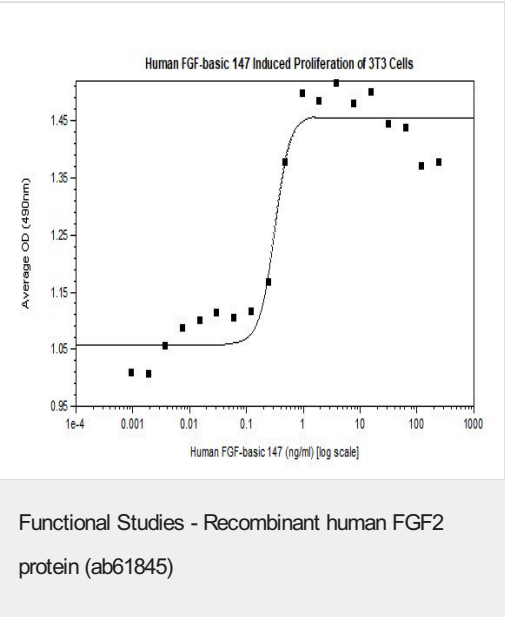
描述	
产品名称	重组人FGF2蛋白
生物活性	Specific activity of 3MIU/mg
纯度	> 95 % SDS-PAGE. Purity greater than 95% as determined by: Analysis by RP-HPLC. Reducing and non-reducing SDS-PAGE.
表达系统	Escherichia coli
蛋白长度	Protein fragment
无动物成分	No
性质	Recombinant
种属	Human
序列	MPA LPEDGGSGAF PPGHFKDPKR LYCKNGGFFL RIHPDGRVDG VREKSDPHIK LQLQAEERGV VSIKGVCANR YLAMKEDGRL LASKCVTDEC FFFERLESNN YNTYRSRKYT SWYVALKRTG QYKLGSKTGP GQKAILFLPM SAKS

技术指标	
Our <b>Abpromise guarantee</b> covers the use of <b>ab61845</b> in the following tested applications.	
The application notes include recommended starting dilutions; optimal dilutions/concentrations should be determined by the end user.	
应用	SDS-PAGE Functional Studies
形式	Lyophilized
补充说明	Add 0.1% HSA or BSA for long term storage at -20°C.

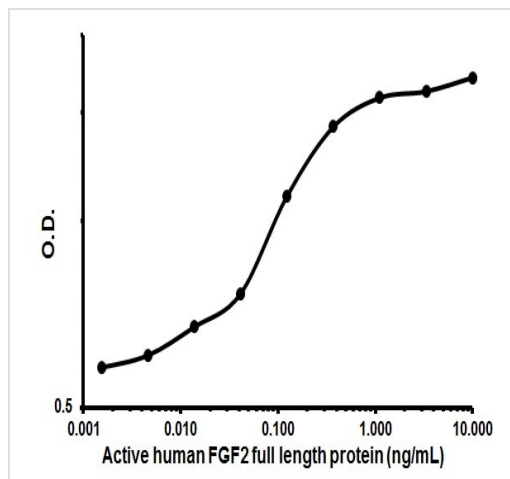
制备和贮存	
稳定性和存储	Shipped at 4°C. Upon delivery aliquot and store at -20°C. Avoid freeze / thaw cycles. Constituent: 0.164% Sodium phosphate This product is an active protein and may elicit a biological response in vivo, handle with caution.

复 溶	It is recommended to reconstitute the lyophilized product with sterile water to a concentration of 0.1 mg/ml, which can be further diluted into other aqueous solutions.
常规信息	
功 能	Plays an important role in the regulation of cell survival, cell division, angiogenesis, cell differentiation and cell migration. Functions as potent mitogen in vitro. Can induce angiogenesis (PubMed:23469107).
组织特异性	Expressed in granulosa and cumulus cells. Expressed in hepatocellular carcinoma cells, but not in non-cancerous liver tissue.
序列相似性	Belongs to the heparin-binding growth factors family.
翻译后修饰	Phosphorylation at Tyr-215 regulates FGF2 unconventional secretion. Several N-termini starting at positions 94, 125, 126, 132, 143 and 162 have been identified by direct sequencing.
细胞定位	Secreted. Nucleus. Exported from cells by an endoplasmic reticulum (ER)/Golgi-independent mechanism. Unconventional secretion of FGF2 occurs by direct translocation across the plasma membrane. Binding of exogenous FGF2 to FGFR facilitates endocytosis followed by translocation of FGF2 across endosomal membrane into the cytosol. Nuclear import from the cytosol requires the classical nuclear import machinery, involving proteins KPNA1 and KPNB1, as well as CEP57.

图 片

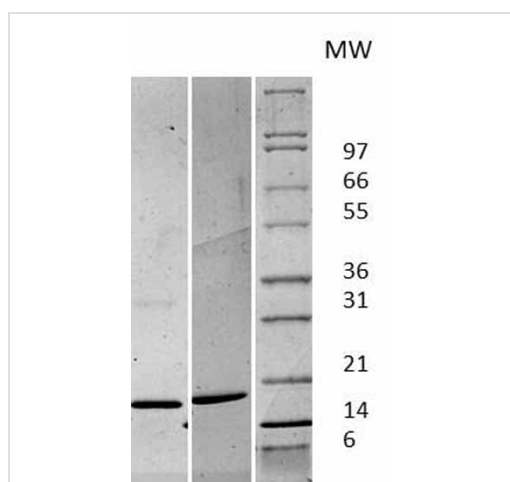


Functional analysis of ab61845



Dose-dependent proliferation of mouse BALB/c 3T3 cells with ab61845. Assays were carried out in triplicate.

Cellular activation - Recombinant human FGF2 protein (ab61845)



ab61845 used in Western Blot. Figure: 1 ug in each lane (-) non-reducing conditions and (+) reducing conditions in a 4-20% Tris-Glycine gel stained with Coomassie Blue. Human FGF basic has a predicted MW of 16.5 kDa.

Western blot - Recombinant human FGF2 protein (ab61845)

**Please note:** All products are "FOR RESEARCH USE ONLY. NOT FOR USE IN DIAGNOSTIC PROCEDURES"

### Our Abpromise to you: Quality guaranteed and expert technical support

- Replacement or refund for products not performing as stated on the datasheet
- Valid for 12 months from date of delivery
- Response to your inquiry within 24 hours

- We provide support in Chinese, English, French, German, Japanese and Spanish
- Extensive multi-media technical resources to help you
- We investigate all quality concerns to ensure our products perform to the highest standards

If the product does not perform as described on this datasheet, we will offer a refund or replacement. For full details of the Abpromise, please visit <https://www.abcam.cn/abpromise> or contact our technical team.

#### **Terms and conditions**

---

- Guarantee only valid for products bought direct from Abcam or one of our authorized distributors