

# Recombinant human Eph receptor B2 protein ab60851

## 5 图像

### 描述

---

产品名称	重组人Eph receptor B2蛋白
生物活性	Specific Activity: 39 nmol/min/mg.
纯度	> 90 % Densitometry. Affinity purified.
表达系统	Baculovirus infected Sf9 cells
Accession	<b><u>P29323-3</u></b>
蛋白长度	Protein fragment
无动物成分	No
性质	Recombinant
种属	Human
预测分子量	66 kDa
氨基酸	570 to 987
标签	GST tag N-Terminus
额外的序列信息	Recombinant fragment, corresponding to amino acids 570-end of Human Eph receptor B2 (cytoplasmic domain).

### 技术指标

---

Our **Abpromise guarantee** covers the use of **ab60851** in the following tested applications.

The application notes include recommended starting dilutions; optimal dilutions/concentrations should be determined by the end user.

应用	SDS-PAGE Functional Studies
形式	Liquid
补充说明	<b>ab204877</b> (Poly (4:1 Glu, Tyr) peptide) can be utilized as a substrate for assessing kinase activity

### 制备和贮存

---

稳定性和存储	Shipped on dry ice. Upon delivery aliquot and store at -80°C. Avoid freeze / thaw cycles. pH: 7.50 Constituents: 0.0038% EGTA, 0.00174% PMSF, 0.00385% DTT, 0.79% Tris HCl, 0.00292%
--------	--

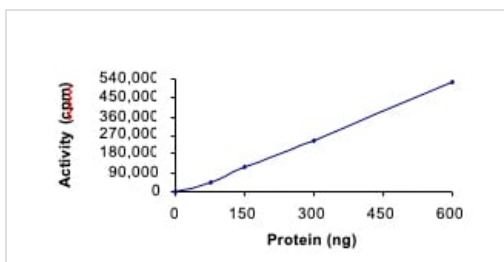
EDTA, 25% Glycerol (glycerin, glycerine), 0.87% Sodium chloride

This product is an active protein and may elicit a biological response in vivo, handle with caution.

## 常规信息

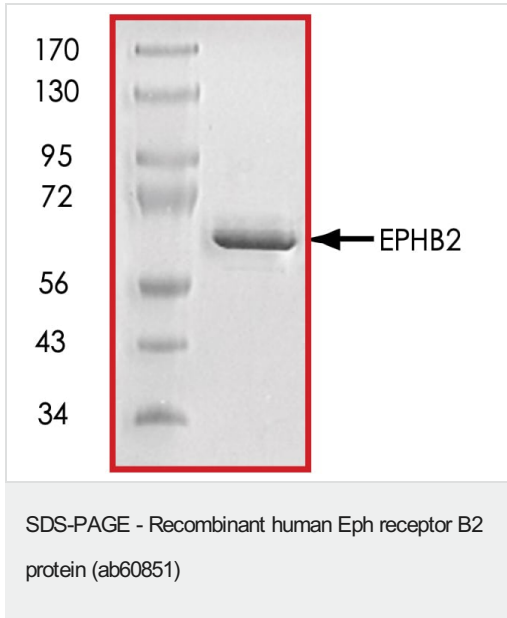
<b>功能</b>	Receptor for members of the ephrin-B family. Phosphorylates ARHGEF15, leading to its ubiquitination and degradation by the proteasome which promotes EFNB1-dependent synapse formation. Can function in aspects of retinal ganglion cell axon guidance to the optic disk even when lacking its tyrosine kinase domain. Acts as a tumor suppressor.
<b>组织特异性</b>	Brain, heart, lung, kidney, placenta, pancreas, liver and skeletal muscle. Preferentially expressed in fetal brain.
<b>疾病相关</b>	Defects in EPHB2 may be a cause of susceptibility to prostate cancer (PC) [MIM:176807]. It is a malignancy originating in tissues of the prostate. Most prostate cancers are adenocarcinomas that develop in the acini of the prostatic ducts. Other rare histopathologic types of prostate cancer that occur in approximately 5% of patients include small cell carcinoma, mucinous carcinoma, prostatic ductal carcinoma, transitional cell carcinoma, squamous cell carcinoma, basal cell carcinoma, adenoid cystic carcinoma (basaloid), signet-ring cell carcinoma and neuroendocrine carcinoma. Note=EPHB2 mutations have been found in a prostate cancer cell line derived from a brain metastasis.
<b>序列相似性</b>	Belongs to the protein kinase superfamily. Tyr protein kinase family. Ephrin receptor subfamily. Contains 2 fibronectin type-III domains. Contains 1 protein kinase domain. Contains 1 SAM (sterile alpha motif) domain.
<b>细胞定位</b>	Membrane.

## 图片

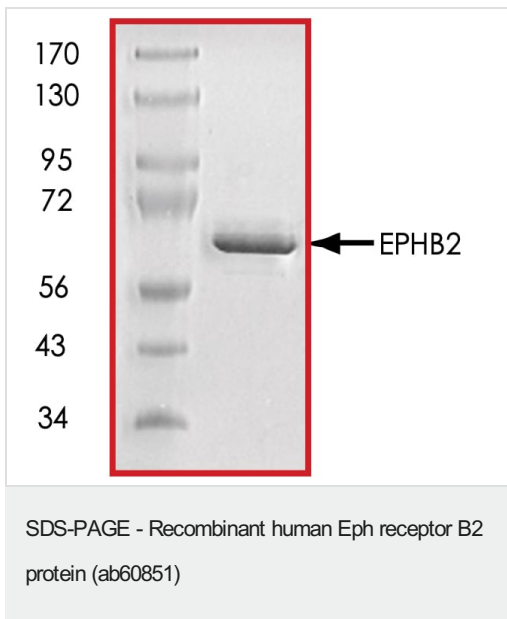


The specific activity of Eph receptor B2 (ab60851) was determined to be 39 nmol/min/mg as per activity assay protocol

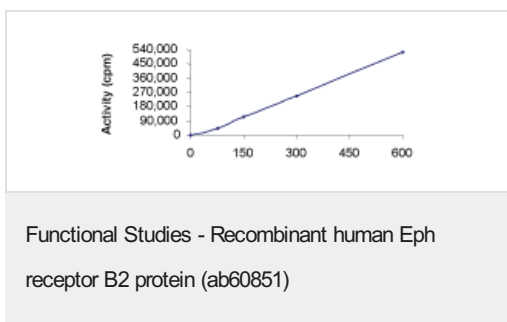
Functional Studies - Recombinant human Eph receptor B2 protein (ab60851)



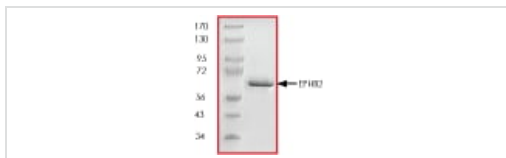
SDS PAGE analysis of ab60851



SDS PAGE analysis of ab60851



Sample Kinase Activity Plot.



ab60851 on SDS-PAGE, MW ~66 kDa.

SDS-PAGE - Recombinant human Eph receptor B2 protein (ab60851)

**Please note:** All products are "FOR RESEARCH USE ONLY. NOT FOR USE IN DIAGNOSTIC PROCEDURES"

### Our Abpromise to you: Quality guaranteed and expert technical support

---

- Replacement or refund for products not performing as stated on the datasheet
- Valid for 12 months from date of delivery
- Response to your inquiry within 24 hours
- We provide support in Chinese, English, French, German, Japanese and Spanish
- Extensive multi-media technical resources to help you
- We investigate all quality concerns to ensure our products perform to the highest standards

If the product does not perform as described on this datasheet, we will offer a refund or replacement. For full details of the Abpromise, please visit <https://www.abcam.cn/abpromise> or contact our technical team.

### Terms and conditions

---

- Guarantee only valid for products bought direct from Abcam or one of our authorized distributors