

Recombinant Human Eotaxin protein ab282376

3 图像

描述	
产品名称	重组人Eotaxin蛋白
纯度	> 95 % SDS-PAGE. =95% by HPLC
内毒素水平	<=0.005 Eu/μg
表达系统	HEK 293 cells
Accession	<u>Q6I9T4</u>
蛋白长度	Full length protein
无动物成分	Yes
无载体	是
性质	Recombinant
种属	Human
序列	GPASVPTTCC FNLANRKIPL QRLESYRRIT SGKCPQKAVI FKTKLAKDIC ADPKKKWVQD SMKYLDQKSP TPKP
预测分子量	8 kDa
实际分子量	8 kDa
分子量信息	Predicted MW 8421.95 is Da. (+/- 10 Da by ESI-TOF). Observed MW is 8421.91 Da. Additional masses at 8624.00 and 8989.00 Da are due to residual O-glycans.
氨基酸	24 to 97
额外的序列信息	N-terminal glycine. Full-length mature chain lacking the signal peptide.

技术指标	
Our Abpromise guarantee covers the use of ab282376 in the following tested applications.	
The application notes include recommended starting dilutions; optimal dilutions/concentrations should be determined by the end user.	
应用	Mass Spectrometry HPLC SDS-PAGE
形式	Lyophilized

制备和贮存

稳定性和存储

Shipped at Room Temperature. Store at Room Temperature.

pH: 7.40

Constituents: 0.727% Dibasic monohydrogen potassium phosphate, 0.428% Monobasic dihydrogen potassium phosphate, 10.26% Trehalose

复溶

Reconstitute with phosphate buffered saline.Store lyophilized form at room temperature.

Reconstitute, aliquot and store at -80°C for 12 months or +4°C for 1 week.Avoid repeated freeze-thaw. Lyophilized contents may appear as either a translucent film or a white powder. This variance does not affect the quality of the product.

常规信息

功能

In response to the presence of allergens, this protein directly promotes the accumulation of eosinophils, a prominent feature of allergic inflammatory reactions. Binds to CCR3.

序列相似性

Belongs to the intercrine beta (chemokine CC) family.

翻译后修饰

O-linked glycan consists of a Gal-GalNAc disaccharide which is modified with up to 2 sialic acid residues.

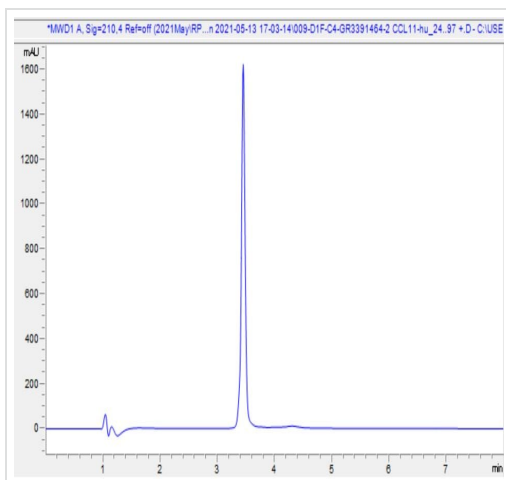
细胞定位

Secreted.

图片

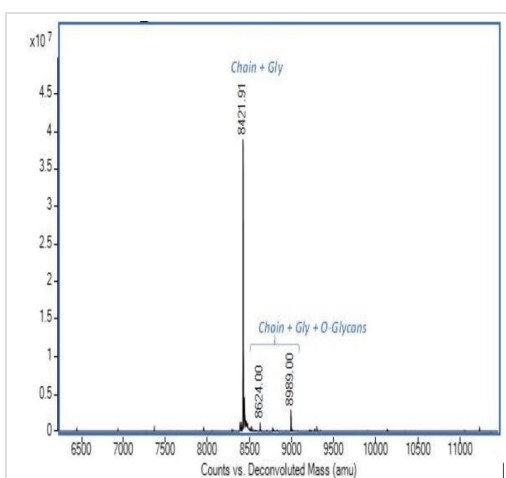


SDS-PAGE analysis of ab282376.



HPLC - Recombinant Human Eotaxin protein
(ab282376)

HPLC analysis of ab282376.



Mass Spectrometry - Human Eotaxin protein
(ab282376)

Mass determination by ESI-TOF.

Predicted MW 8421.95 is Da (+/- 10 Da by ESI-TOF). Observed MW is 8421.91 Da. Additional masses at 8624.00, 8989.00 are due to residual O-glycans.

Please note: All products are "FOR RESEARCH USE ONLY. NOT FOR USE IN DIAGNOSTIC PROCEDURES"

Our Abpromise to you: Quality guaranteed and expert technical support

- Replacement or refund for products not performing as stated on the datasheet
- Valid for 12 months from date of delivery
- Response to your inquiry within 24 hours

- We provide support in Chinese, English, French, German, Japanese and Spanish
- Extensive multi-media technical resources to help you
- We investigate all quality concerns to ensure our products perform to the highest standards

If the product does not perform as described on this datasheet, we will offer a refund or replacement. For full details of the Abpromise, please visit <https://www.abcam.cn/abpromise> or contact our technical team.

Terms and conditions

- Guarantee only valid for products bought direct from Abcam or one of our authorized distributors