

Recombinant Human ENSA protein ab92932

2 References [1 图像](#)

描述

产品名称	重组人ENSA蛋白
纯度	> 90 % SDS-PAGE. ab92932 is purified using conventional chromatography techniques.
表达系统	Escherichia coli
蛋白长度	Full length protein
无动物成分	No
性质	Recombinant
种属	Human
序列	MGSSHHHHHH SSGLVPRGSH MSQKQEEENP AEETGEEKQD TQEKEGILPE RAEEAKLKAK YPSLGQKPGG SDFLMKRLQK GQKYFDSGDY NMAKAKMKNK QLPSAGPDKN LVTGDHIPTP QDLPQRKSSL VTSKLAGGQV E

技术指标

Our **Abpromise guarantee** covers the use of **ab92932** in the following tested applications.

The application notes include recommended starting dilutions; optimal dilutions/concentrations should be determined by the end user.

应用	SDS-PAGE
形式	Liquid

制备和贮存

稳定性和存储	Shipped at 4°C. Upon delivery aliquot and store at -20°C or -80°C. Avoid repeated freeze / thaw cycles. pH: 8.00 Constituents: 0.0154% DTT, 0.316% Tris HCl, 10% Glycerol
--------	---

常规信息

功能	Protein phosphatase inhibitor that specifically inhibits protein phosphatase 2A (PP2A) during
----	---

mitosis. When phosphorylated at Ser-67 during mitosis, specifically interacts with PPP2R2D (PR55-delta) and inhibits its activity, leading to inactivation of PP2A, an essential condition to keep cyclin-B1-CDK1 activity high during M phase (By similarity). Also acts as a stimulator of insulin secretion by interacting with sulfonyleurea receptor (ABCC8), thereby preventing sulfonyleurea from binding to its receptor and reducing K(ATP) channel currents.

组织特异性

Widely expressed with high levels in skeletal muscle and brain and lower levels in the pancreas.

序列相似性

Belongs to the endosulfine family.

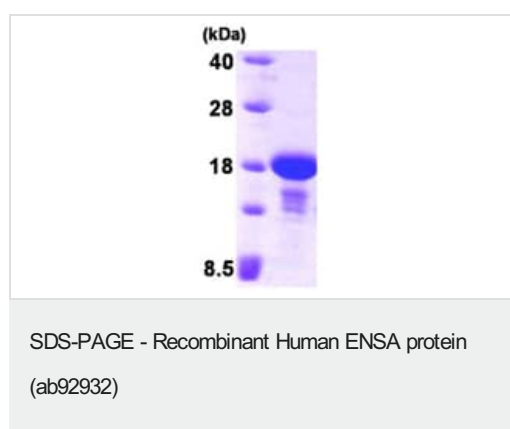
翻译后修饰

Phosphorylation at Ser-67 by GWL during mitosis is essential for interaction with PPP2R2D (PR55-delta) and subsequent inactivation of PP2A (By similarity). Phosphorylated by PKA.

细胞定位

Cytoplasm.

图片



ab92932 staining ENSA protein on a 15% SDS-PAGE (3 µg)

Please note: All products are "FOR RESEARCH USE ONLY. NOT FOR USE IN DIAGNOSTIC PROCEDURES"

Our Abpromise to you: Quality guaranteed and expert technical support

- Replacement or refund for products not performing as stated on the datasheet
- Valid for 12 months from date of delivery
- Response to your inquiry within 24 hours
- We provide support in Chinese, English, French, German, Japanese and Spanish
- Extensive multi-media technical resources to help you
- We investigate all quality concerns to ensure our products perform to the highest standards

If the product does not perform as described on this datasheet, we will offer a refund or replacement. For full details of the Abpromise, please visit <https://www.abcam.cn/abpromise> or contact our technical team.

Terms and conditions

- Guarantee only valid for products bought direct from Abcam or one of our authorized distributors