

Recombinant human ENO1 protein ab167976

★★★★★ [1 Abreviews](#) [1 References](#) [1 图像](#)

描述

产品名称	重组人ENO1蛋白
生物活性	Specific activity: > 13 units/ml. One unit will convert 1.0 μmole of 2-phosphoglycerate to phosphoenol pyruvate per minute at pH 7.5 at 25°C.
纯度	> 90 % SDS-PAGE.
表达系统	Escherichia coli
Accession	<u>P06733</u>
蛋白长度	Full length protein
无动物成分	No
性质	Recombinant
种属	Human
序列	<pre> MSILKIHAREIFDSRGNPTVEVDLFTSKGLFRAAVPSGASTG IYEALER DNDKTRYMGKGVSKAVEHINKTIAPALVSKKLNVTQEKIDK LMIEMDGT ENKSKFGANAILGVSLAVCKAGAVEKGVPLYRHIADLAGNSE VILPVPAF NVIINGGSHAGNKLAMQEFMILPVGAANFREAMRIGAEVYHNL KNVIKEY GKDATNVGDEGGFAPNILENKEGLELLKTAIGKAGYTDKVI GMDVAASE FFRSGKYDLDFKSPDDPSRYISPDQLADLYKSFIDYPPVSI EDPFDQDD WGAWQKFTASAGIQVVGDDLTVTNPKRIAKAVNEKSCNLLL KVNQIGSV TESLQACKLAQANGWVMVSHRSGETEDTFIADLVVGLCTGQ IKTGAPCR SERLAKYNQLLRIEEEELGSKAKFAGRNFNRNPLAK </pre>
预测分子量	47 kDa
氨基酸	1 to 434

技术指标

Our **Abpromise guarantee** covers the use of **ab167976** in the following tested applications.

The application notes include recommended starting dilutions; optimal dilutions/concentrations should be determined by the end user.

应用	SDS-PAGE Functional Studies
形式	Liquid
补充说明	This product is manufactured by BioVision, an Abcam company and was previously called 6363 Human Recombinant Alpha-Enolase. 6363-100 is the same size as the 100 µg size of ab167976.

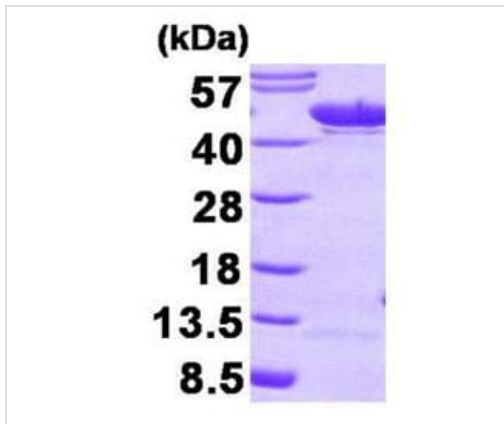
制备和贮存

稳定性和存储	Shipped at 4°C. Store at +4°C short term (1-2 weeks). Upon delivery aliquot. Store at -20°C or -80°C. Avoid freeze / thaw cycle. Constituents: 0.32% Tris HCl, 10% Glycerol (glycerin, glycerine), 0.012% Magnesium sulphate This product is an active protein and may elicit a biological response in vivo, handle with caution.
---------------	---

常规信息

功能	Multifunctional enzyme that, as well as its role in glycolysis, plays a part in various processes such as growth control, hypoxia tolerance and allergic responses. May also function in the intravascular and pericellular fibrinolytic system due to its ability to serve as a receptor and activator of plasminogen on the cell surface of several cell-types such as leukocytes and neurons. Stimulates immunoglobulin production. MBP1 binds to the myc promoter and acts as a transcriptional repressor. May be a tumor suppressor.
组织特异性	The alpha/alpha homodimer is expressed in embryo and in most adult tissues. The alpha/beta heterodimer and the beta/beta homodimer are found in striated muscle, and the alpha/gamma heterodimer and the gamma/gamma homodimer in neurons.
通路	Carbohydrate degradation; glycolysis; pyruvate from D-glyceraldehyde 3-phosphate: step 4/5.
序列相似性	Belongs to the enolase family.
发展阶段	During ontogenesis, there is a transition from the alpha/alpha homodimer to the alpha/beta heterodimer in striated muscle cells, and to the alpha/gamma heterodimer in nerve cells.
翻译后修饰	ISGylated.
细胞定位	Nucleus and Cytoplasm. Cell membrane. Cytoplasm > myofibril > sarcomere > M line. Can translocate to the plasma membrane in either the homodimeric (alpha/alpha) or heterodimeric (alpha/gamma) form. ENO1 is localized to the M line.

图片



15% SDS PAGE of ab167976 (3µg).

SDS-PAGE - Recombinant human ENO1 protein
(ab167976)

Please note: All products are "FOR RESEARCH USE ONLY. NOT FOR USE IN DIAGNOSTIC PROCEDURES"

Our Abpromise to you: Quality guaranteed and expert technical support

- Replacement or refund for products not performing as stated on the datasheet
- Valid for 12 months from date of delivery
- Response to your inquiry within 24 hours
- We provide support in Chinese, English, French, German, Japanese and Spanish
- Extensive multi-media technical resources to help you
- We investigate all quality concerns to ensure our products perform to the highest standards

If the product does not perform as described on this datasheet, we will offer a refund or replacement. For full details of the Abpromise, please visit <https://www.abcam.cn/abpromise> or contact our technical team.

Terms and conditions

- Guarantee only valid for products bought direct from Abcam or one of our authorized distributors