

Product datasheet

Recombinant Human Endothelin A Receptor/ET-A protein ab152357

1 图像

描述

产品名称	重组人Endothelin A Receptor/ET-A蛋白
表达系统	Wheat germ
Accession	<u>P25101</u>
蛋白长度	Full length protein
无动物成分	No
性质	Recombinant
种属	Human
序列	METLCLRASFWLALVGCVISDNPERYSTNLSNHVDDFTTFRG TELSFLVT THQPTNLVLPNGSMHNYCPQQTKITSAFKYINTVISCTIFI VGMVGNAT LLRIIYQNKCMRNGPNALIASLALGDLIYVVIDLPINVKLL AGRWPFDH NDFGVFLCKLFPFLQKSSVGITVLNLCALSVDYRRAVASWSR VQGIGIPL VTAIEIVSIWILSFILAIPEAIGFVMVPFEYRGEQHKTCMLN ATSKFMEF YQDVKDWWLFGFYFCMPLVCTAIFYTLMTCEMLNRRNGSLRI ALSEHLKQ RREVAKTVFCLVVIFALCWFPPLHLSRILKKTVYNEMDKNRCE LLSFLLM DYIGINLATMNSCINPIALYFVSKKFKNCFQSCLCCCCYQSK SLMTSVPM NGTSIQWKNHDQNNHNTDRSSHKDSMN
预测分子量	75 kDa including tags
氨基酸	1 to 427

技术指标

Our **Abpromise guarantee** covers the use of **ab152357** in the following tested applications.

The application notes include recommended starting dilutions; optimal dilutions/concentrations should be determined by the end user.

应用 ELISA

SDS-PAGE

Western blot

形式

Liquid

补充说明

制备和贮存

稳定性和存储

Shipped on dry ice. Upon delivery aliquot and store at -80°C. Avoid freeze / thaw cycles.

pH: 8.00

Constituents: 0.31% Glutathione, 0.79% Tris HCl

常规信息

功能

Receptor for endothelin-1. Mediates its action by association with G proteins that activate a phosphatidylinositol-calcium second messenger system. The rank order of binding affinities for ET-A is: ET1 > ET2 >> ET3.

组织特异性

Isoform 1, isoform 3 and isoform 4 are expressed in a variety of tissues, with highest levels in the aorta and cerebellum, followed by lung, atrium and cerebral cortex, lower levels in the placenta, kidney, adrenal gland, duodenum, colon, ventricle and liver but no expression in umbilical vein endothelial cells. Within the placenta, isoform 1, isoform 2, isoform 3 and isoform 4 are expressed in the villi and stem villi vessels.

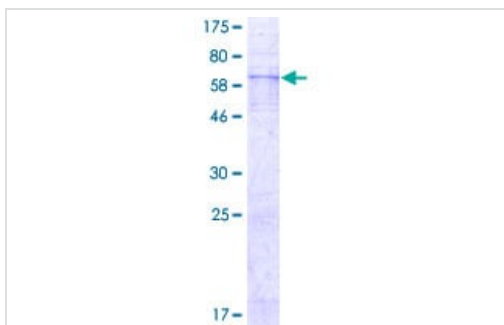
序列相似性

Belongs to the G-protein coupled receptor 1 family. Endothelin receptor subfamily. EDNRA sub-subfamily.

细胞定位

Cell membrane.

图片



12.5% SDS-PAGE analysis of ab152357 stained with Coomassie Blue.

SDS-PAGE - Recombinant Human Endothelin A
Receptor/ET-A protein (ab152357)

Please note: All products are "FOR RESEARCH USE ONLY. NOT FOR USE IN DIAGNOSTIC PROCEDURES"

Our Abpromise to you: Quality guaranteed and expert technical support

- Replacement or refund for products not performing as stated on the datasheet
- Valid for 12 months from date of delivery
- Response to your inquiry within 24 hours

- We provide support in Chinese, English, French, German, Japanese and Spanish
- Extensive multi-media technical resources to help you
- We investigate all quality concerns to ensure our products perform to the highest standards

If the product does not perform as described on this datasheet, we will offer a refund or replacement. For full details of the Abpromise, please visit <https://www.abcam.cn/abpromise> or contact our technical team.

Terms and conditions

- Guarantee only valid for products bought direct from Abcam or one of our authorized distributors