

Recombinant Human E2F4 protein ab152352

1 图像

描述

产品名称	重组人E2F4蛋白
表达系统	Wheat germ
Accession	<u>Q16254</u>
蛋白长度	Full length protein
无动物成分	No
性质	Recombinant
种属	Human
序列	<p>MAEAGPQAPPPPGTPSRHEKSLGLLTTKFVSLLEAKDGVLD LKLAADTL AVRQKRRIYDITNVLEGIGLIEKKSNSIQWKGVGPQCNTRE IADKLIEL KAEIEELQREQELDQHKVWVQQSIRNVTEDEVQNSCLAYVTH EDICRCFA GDTLLAIRAPSGTSLEVPIPEGLNGQKQYIHLKSVSGPIEV LLVNKEAW SSPPVAVPVPPEPDLQSPSAVSTPPPLPKPALAQSQEASRP NSPQLTPT AVPGSAEVQGMAGPAAEITVSGGPGTDSKDSGELSSLPLGPT TLDTRPLQ SSALLDSSSSSSSSSSSSNSNSSSSSSGPNPSTSFEPKADP TGVLELPK ELSEIFDPTRECMSELLEELMSSEVFAPLLRLSPPPGDHDY IYNLDESE GVCDFDVPVLNL</p>
预测分子量	70 kDa including tags
氨基酸	1 to 413

技术指标

Our **Abpromise guarantee** covers the use of **ab152352** in the following tested applications.

The application notes include recommended starting dilutions; optimal dilutions/concentrations should be determined by the end user.

应用	ELISA
	Western blot

SDS-PAGE

形式
补充说明

Liquid

制备和贮存

稳定性和存储

Shipped on dry ice. Upon delivery aliquot and store at -80°C. Avoid freeze / thaw cycles.

pH: 8.00

Constituents: 0.31% Glutathione, 0.79% Tris HCl

常规信息

功能

Transcription activator that binds DNA cooperatively with DP proteins through the E2 recognition site, 5'-TTTC[CG]CGC-3' found in the promoter region of a number of genes whose products are involved in cell cycle regulation or in DNA replication. The DRTF1/E2F complex functions in the control of cell-cycle progression from G1 to S phase. E2F-4 binds with high affinity to RBL1 and RBL2. In some instances, can also bind RB protein.

组织特异性

Found in all tissue examined including heart, brain, placenta, lung, liver, skeletal muscle, kidney and pancreas.

序列相似性

Belongs to the E2F/DP family.

发展阶段

Present in the growth-arrested state, its abundance does not change significantly as cells move into and through the cell cycle.

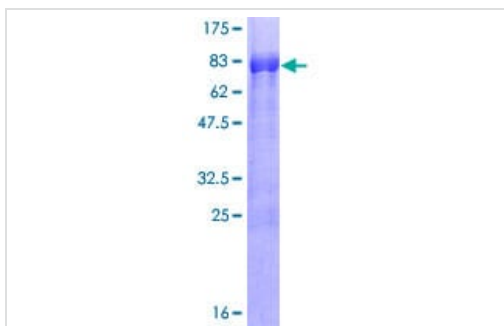
翻译后修饰

Differentially phosphorylated in vivo.

细胞定位

Nucleus.

图片



12.5% SDS-PAGE analysis of ab152352 stained with Coomassie Blue.

SDS-PAGE - Recombinant Human E2F4 protein
(ab152352)

Please note: All products are "FOR RESEARCH USE ONLY. NOT FOR USE IN DIAGNOSTIC PROCEDURES"

Our Abpromise to you: Quality guaranteed and expert technical support

- Replacement or refund for products not performing as stated on the datasheet
- Valid for 12 months from date of delivery
- Response to your inquiry within 24 hours

- We provide support in Chinese, English, French, German, Japanese and Spanish
- Extensive multi-media technical resources to help you
- We investigate all quality concerns to ensure our products perform to the highest standards

If the product does not perform as described on this datasheet, we will offer a refund or replacement. For full details of the Abpromise, please visit <https://www.abcam.cn/abpromise> or contact our technical team.

Terms and conditions

- Guarantee only valid for products bought direct from Abcam or one of our authorized distributors