

Recombinant Human E Cadherin protein ab235682

1 图像

描述

产品名称 重组人E Cadherin蛋白
纯度 > 90 % SDS-PAGE.

表达系统 Escherichia coli

Accession **P12830**

蛋白长度 Protein fragment

无动物成分 No

性质 Recombinant

种属 Human

序列

```
DWVIPPISCPENEKGFPPKNLVQIKSNKDKEGKVFYSITGQG  
ADTPPVGV  
FIIERETGWLKVTEPLDRERIATYTLFSHAVSSNGNAVEDPM  
EILITVTD  
QNDNKPEFTQEVFKGSVMEGALPGTSVMEVTATDADDDVNTY  
NAAIAYTI  
LSQDPELPDKNMFTINRNTGVISVVTGLDRESFPTYTLVVQ  
AADLQGEG  
LSTTATAVITVTDNDNPPIFNPTTYKQVPENEANVVITTL  
KVTADADAP  
NTPAWEAVYTI LNDDGGQFVVTTNPVNNDGILKTAKGLDFEA  
KQYILHV  
AVTNVVPFEVSLTTSTATVTVDVLDVNEAPIFVPPEKRVEVS  
EDFGVGQE  
ITSYTAQEPDTFMEQKITYRIWRDTANWLEINPDTGAISTRA  
ELDREDFE  
HVKNSTYTALIIATDNGSPVATGTGTL LLLILSDVNDNAPIPE  
PRTIFFCE  
RNPKPQVINIIDADLPPNTSPFTAELTHGASANWTIQYNDPT  
QESIILKP  
KMALEVGDYKINLKLMDNQNKDQVTTLEVSVCDCEGAAGVCR  
KAQPVEAG LQI
```

预测分子量 64 kDa including tags

氨基酸 155 to 707

标签 His tag N-Terminus

技术指标

Our **Abpromise guarantee** covers the use of **ab235682** in the following tested applications.

The application notes include recommended starting dilutions; optimal dilutions/concentrations should be determined by the end user.

应用 SDS-PAGE

形式 Liquid

制备和贮存

稳定性和存储 Shipped at 4°C. Store at -20°C or -80°C. Avoid freeze / thaw cycle.

pH: 7.2

Constituents: Tris buffer, 50% Glycerol (glycerin, glycerine)

常规信息

功能 Cadherins are calcium-dependent cell adhesion proteins. They preferentially interact with themselves in a homophilic manner in connecting cells; cadherins may thus contribute to the sorting of heterogeneous cell types. CDH1 is involved in mechanisms regulating cell-cell adhesions, mobility and proliferation of epithelial cells. Has a potent invasive suppressor role. It is a ligand for integrin alpha-E/beta-7.

E-Cad/CTF2 promotes non-amyloidogenic degradation of Abeta precursors. Has a strong inhibitory effect on APP C99 and C83 production.

组织特异性 Non-neural epithelial tissues.

疾病相关 Defects in CDH1 are the cause of hereditary diffuse gastric cancer (HDGC) [MIM:137215]. An autosomal dominant cancer predisposition syndrome with increased susceptibility to diffuse gastric cancer. Diffuse gastric cancer is a malignant disease characterized by poorly differentiated infiltrating lesions resulting in thickening of the stomach. Malignant tumors start in the stomach, can spread to the esophagus or the small intestine, and can extend through the stomach wall to nearby lymph nodes and organs. It also can metastasize to other parts of the body. Note=Heterozygous germline mutations CDH1 are responsible for familial cases of diffuse gastric cancer. Somatic mutations in the has also been found in patients with sporadic diffuse gastric cancer and lobular breast cancer.

Defects in CDH1 are a cause of susceptibility to endometrial cancer (ENDMC) [MIM:608089].

Defects in CDH1 are a cause of susceptibility to ovarian cancer (OC) [MIM:167000]. Ovarian cancer common malignancy originating from ovarian tissue. Although many histologic types of ovarian neoplasms have been described, epithelial ovarian carcinoma is the most common form. Ovarian cancers are often asymptomatic and the recognized signs and symptoms, even of late-stage disease, are vague. Consequently, most patients are diagnosed with advanced disease.

序列相似性 Contains 5 cadherin domains.

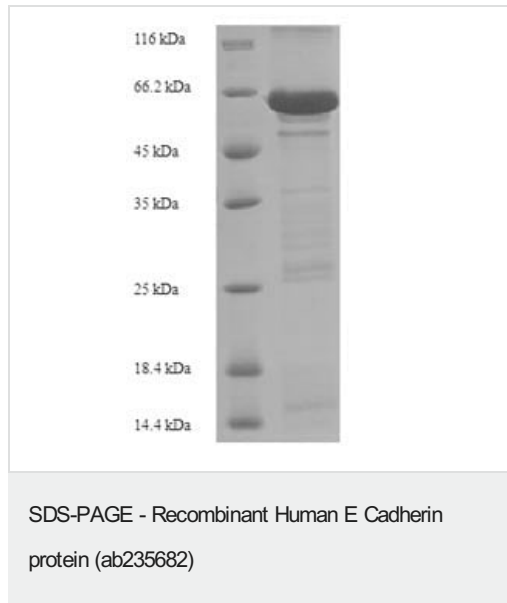
翻译后修饰 During apoptosis or with calcium influx, cleaved by a membrane-bound metalloproteinase (ADAM10), PS1/gamma-secretase and caspase-3 to produce fragments of about 38 kDa (E-CAD/CTF1), 33 kDa (E-CAD/CTF2) and 29 kDa (E-CAD/CTF3), respectively. Processing by the metalloproteinase, induced by calcium influx, causes disruption of cell-cell adhesion and the subsequent release of beta-catenin into the cytoplasm. The residual membrane-tethered cleavage product is rapidly degraded via an intracellular proteolytic pathway. Cleavage by

caspace-3 releases the cytoplasmic tail resulting in disintegration of the actin microfilament system. The gamma-secretase-mediated cleavage promotes disassembly of adherens junctions.

细胞定位

Cell junction. Cell membrane. Endosome. Golgi apparatus > trans-Golgi network. Colocalizes with DLGAP5 at sites of cell-cell contact in intestinal epithelial cells. Anchored to actin microfilaments through association with alpha-, beta- and gamma-catenin. Sequential proteolysis induced by apoptosis or calcium influx, results in translocation from sites of cell-cell contact to the cytoplasm. Colocalizes with RAB11A endosomes during its transport from the Golgi apparatus to the plasma membrane.

图片



(Tris-Glycine gel) Discontinuous SDS-PAGE (reduced) analysis with 5% enrichment gel and 15% separation gel of ab235682.

Please note: All products are "FOR RESEARCH USE ONLY. NOT FOR USE IN DIAGNOSTIC PROCEDURES"

Our Abpromise to you: Quality guaranteed and expert technical support

- Replacement or refund for products not performing as stated on the datasheet
- Valid for 12 months from date of delivery
- Response to your inquiry within 24 hours
- We provide support in Chinese, English, French, German, Japanese and Spanish
- Extensive multi-media technical resources to help you
- We investigate all quality concerns to ensure our products perform to the highest standards

If the product does not perform as described on this datasheet, we will offer a refund or replacement. For full details of the Abpromise, please visit <https://www.abcam.cn/abpromise> or contact our technical team.

Terms and conditions

- Guarantee only valid for products bought direct from Abcam or one of our authorized distributors