

Recombinant Human DC-SIGN protein ab131780

1 图像

描述

| | | |
|-----------|-----------------------|--|
| 产品名称 | 重组人DC-SIGN蛋白 | |
| 表达系统 | Wheat germ | |
| Accession | <u>Q9NNX6</u> | |
| 蛋白长度 | Full length protein | |
| 无动物成分 | No | |
| 性质 | Recombinant | |
| 种属 | Human | |
| 序列 | | <p>MSDSKEPRLQQLGLLEEEQLRGLGFRQTRGYKSLAGCLGHGP LVLQLLSF TLLAGLLVQVSKVPSSISQEQSRQDAIYQNLTLKAAVGELS EKSKLQEI YQELTQLKAAVGELPEKSKLQEIYQELTRLKAAVGELPEKSK LQEIYQEL TWLKAAVGELPEKSKMQEIYQELTRLKAAVGELPEKSKQQEI YQELTRLK AAVGELPEKSKQQEIYQELTRLKAAVGELPEKSKQQEIYQEL TQLKAAVE RLCHPCPWEWTFQGNCFMSNSQRNWHDSITACKEVGAQLV VIKSAEEQ NFLQLQSSRSNRFTWMGLSDLNQEGTWQWVDGSPLLPSFKQY WNRGEPNN VGEEDCAEFSGNGWDDKCNLAKFWICKKSAASCSRDEEQFL SPAPATPN PPPA</p> |
| 预测分子量 | 72 kDa including tags | |
| 氨基酸 | 1 to 404 | |
| 标签 | GST tag N-Terminus | |

技术指标

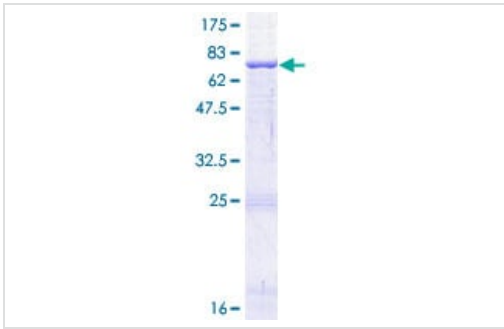
Our **Abpromise guarantee** covers the use of **ab131780** in the following tested applications.

The application notes include recommended starting dilutions; optimal dilutions/concentrations should be determined by the end user.

应用 ELISA

| | |
|---------------|--|
| | Western blot |
| | SDS-PAGE |
| 形式 | Liquid |
| 制备和贮存 | |
| 稳定性和存储 | Shipped on dry ice. Upon delivery aliquot and store at -80°C. Avoid freeze / thaw cycles. pH: 8.00 Constituents: 0.31% Glutathione, 0.79% Tris HCl |
| 常规信息 | |
| 功能 | Pathogen-recognition receptor expressed on the surface of immature dendritic cells (DCs) and involved in initiation of primary immune response. Thought to mediate the endocytosis of pathogens which are subsequently degraded in lysosomal compartments. The receptor returns to the cell membrane surface and the pathogen-derived antigens are presented to resting T-cells via MHC class II proteins to initiate the adaptive immune response. Probably recognizes in a calcium-dependent manner high mannose N-linked oligosaccharides in a variety of pathogen antigens, including HIV-1 gp120, HIV-2 gp120, SIV gp120, ebolavirus glycoproteins, cytomegalovirus gB, HCV E2, dengue virus gE, Leishmania pifanoi LPG, Lewis-x antigen in Helicobacter pylori LPS, mannose in Klebsiella pneumoniae LPS, di-mannose and tri-mannose in Mycobacterium tuberculosis ManLAM and Lewis-x antigen in Schistosoma mansoni SEA. On DCs it is a high affinity receptor for ICAM2 and ICAM3 by binding to mannose-like carbohydrates. May act as a DC rolling receptor that mediates transendothelial migration of DC precursors from blood to tissues by binding endothelial ICAM2. Seems to regulate DC-induced T-cell proliferation by binding to ICAM3 on T-cells in the immunological synapse formed between DC and T-cells. |
| 组织特异性 | Predominantly expressed in dendritic cells and in DC-residing tissues. Also found in placental macrophages, endothelial cells of placental vascular channels, peripheral blood mononuclear cells, and THP-1 monocytes. |
| 序列相似性 | Contains 1 C-type lectin domain. |
| 结构域 | The tandem repeat domain, also called neck domain, mediates oligomerization. |
| 细胞定位 | Secreted and Cell membrane. |

图片



12.5% SDS-PAGE analysis of ab131780 stained with Coomassie Blue.

SDS-PAGE - Recombinant Human DC-SIGN protein (ab131780)

Please note: All products are "FOR RESEARCH USE ONLY. NOT FOR USE IN DIAGNOSTIC PROCEDURES"

Our Abpromise to you: Quality guaranteed and expert technical support

- Replacement or refund for products not performing as stated on the datasheet
- Valid for 12 months from date of delivery
- Response to your inquiry within 24 hours

- We provide support in Chinese, English, French, German, Japanese and Spanish
- Extensive multi-media technical resources to help you
- We investigate all quality concerns to ensure our products perform to the highest standards

If the product does not perform as described on this datasheet, we will offer a refund or replacement. For full details of the Abpromise, please visit <https://www.abcam.cn/abpromise> or contact our technical team.

Terms and conditions

- Guarantee only valid for products bought direct from Abcam or one of our authorized distributors