

Recombinant Human Cyclin D3/CCND3 protein ab158041

1 图像

描述	
产品名称	重组人Cyclin D3/CCND3蛋白
表达系统	Wheat germ
蛋白长度	Full length protein
无动物成分	No
性质	Recombinant
种属	Human
序列	MELLCCEGTRHAPRAGPDPRL LGDQRVLQSLLRLEERYVPRA SYFQCVQR EIKPHMRKMLAYWMLEVCEEQRCEEEVFPLAMNYLDRYLSCV PTRKAQLQ LLGAVCMLLASKLRETTPLTIEKLCIYTDHAVSPRQLRDWEV LVLGKWK DLAAVIAHDFLAFILHRLSLPRDRQALVKKHAQTFLALCATD YTFAMYPP SMIATGSIGAAVQGLGACSMGDELTELLAGITGTEVDCLRA CQEQIEAA LRESLREASQTSSSPAPKAPRGSSSQGPSQTSTPTDVTAIHL
氨基酸	1 to 292
标签	GST tag N-Terminus

技术指标	
Our <b>Abpromise guarantee</b> covers the use of <b>ab158041</b> in the following tested applications.	
The application notes include recommended starting dilutions; optimal dilutions/concentrations should be determined by the end user.	
应用	ELISA Western blot
形式	Liquid
补充说明	This product was previously labelled as Cyclin D3.

制备和贮存

## 稳定性和存储

Shipped on dry ice. Upon delivery aliquot and store at -80°C. Avoid freeze / thaw cycles.

pH: 8.00

Constituents: 0.31% Glutathione, 0.79% Tris HCl

## 常规信息

### 功能

Regulatory component of the cyclin D3-CDK4 (DC) complex that phosphorylates and inhibits members of the retinoblastoma (RB) protein family including RB1 and regulates the cell-cycle during G(1)/S transition. Phosphorylation of RB1 allows dissociation of the transcription factor E2F from the RB/E2F complex and the subsequent transcription of E2F target genes which are responsible for the progression through the G(1) phase. Hypophosphorylates RB1 in early G(1) phase. Cyclin D-CDK4 complexes are major integrators of various mitogenic and antimitogenic signals. Also substrate for SMAD3, phosphorylating SMAD3 in a cell-cycle-dependent manner and repressing its transcriptional activity. Component of the ternary complex, cyclin D3/CDK4/CDKN1B, required for nuclear translocation and activity of the cyclin D-CDK4 complex.

### 序列相似性

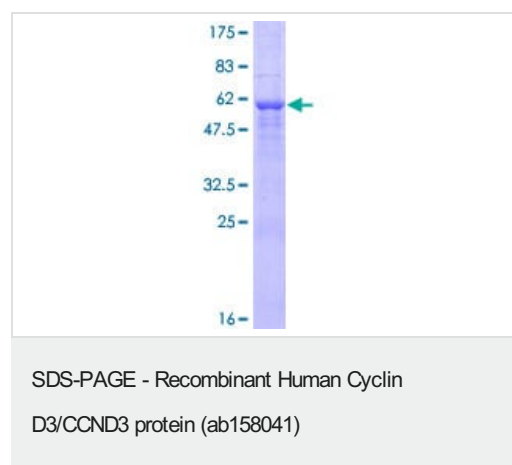
Belongs to the cyclin family. Cyclin D subfamily.

Contains 1 cyclin N-terminal domain.

### 细胞定位

Nucleus. Cytoplasm. Membrane. Cyclin D-CDK4 complexes accumulate at the nuclear membrane and are then translocated to the nucleus through interaction with KIP/CIP family members.

## 图片



ab158041 on a 12.5% SDS-PAGE stained with Coomassie Blue.

**Please note:** All products are "FOR RESEARCH USE ONLY. NOT FOR USE IN DIAGNOSTIC PROCEDURES"

## Our Abpromise to you: Quality guaranteed and expert technical support

- Replacement or refund for products not performing as stated on the datasheet
- Valid for 12 months from date of delivery
- Response to your inquiry within 24 hours
- We provide support in Chinese, English, French, German, Japanese and Spanish

- Extensive multi-media technical resources to help you
- We investigate all quality concerns to ensure our products perform to the highest standards

If the product does not perform as described on this datasheet, we will offer a refund or replacement. For full details of the Abpromise, please visit <https://www.abcam.cn/abpromise> or contact our technical team.

#### **Terms and conditions**

---

- Guarantee only valid for products bought direct from Abcam or one of our authorized distributors