

Recombinant Human Cyclin A2 protein ab126696

1 图像

描述	
产品名称	重组人Cyclin A2蛋白
纯度	> 90 % SDS-PAGE. ab126696 is purified by conventional chromatography techniques.
表达系统	Escherichia coli
Accession	<b>P20248</b>
蛋白长度	Full length protein
无动物成分	No
性质	Recombinant
种属	Human
序列	MGSSHHHHHH SSGLVPRGSH MGSMLGNSA PGPATREAGS ALLALQQTAL QEDQENINPE KAAPVQQPRT RAALAVLKSG NPRGLAQQQR PKTRRVAPLK DLPVNDEHVT VPPWKANSKQ PAFTIHVDEA EKEAQKKPAE SQKIEREDAL AFNSAISLPG PRKPLVPLDY PMDGSFESPH TMDMSIVLED EKPVSVNEVP DYHEDIHTYL REMEVKCKPK VGYMKKQPDI TNSMRAILVD WLVEVGEEYK LQNETLHLAV NYIDRFLSSM SVLRGKLQLV GTAAMLLASK FEEIYPPEVA EFVYITDDTY TKKQVLRMEH LVLKVLTFDL AAPTQNQFLT QYFLHQQPAN CKVESLAMFL GELSLIDADP YLKYLPSVIA GAAFHLALYT VTGQSWPESL IRKTGYTLES LKPCLMDLHQ TYLKAPQHAQ QSIREKYKNS KYHGVSLNLP PETLNL
预测分子量	51 kDa including tags
氨基酸	1 to 432
标签	His tag N-Terminus

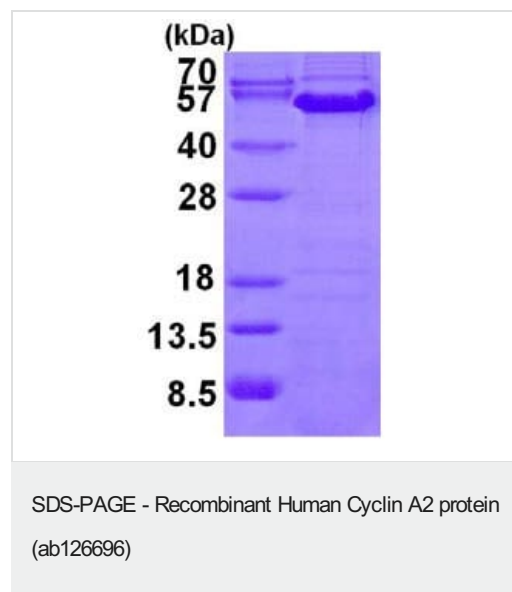
技术指标

Our **Abpromise guarantee** covers the use of **ab126696** in the following tested applications.

The application notes include recommended starting dilutions; optimal dilutions/concentrations should be determined by the end user.

应用	SDS-PAGE
形式	Liquid
<b>制备和贮存</b>	
稳定性和存储	<p>Shipped at 4°C. Store at +4°C short term (1-2 weeks). Upon delivery aliquot. Store at -20°C or -80°C. Avoid freeze / thaw cycle.</p> <p>pH: 8.00</p> <p>Constituents: 0.02% DTT, 0.32% Tris HCl, 20% Glycerol (glycerin, glycerine), 0.88% Sodium chloride</p>
<b>常规信息</b>	
功能	Essential for the control of the cell cycle at the G1/S (start) and the G2/M (mitosis) transitions.
序列相似性	Belongs to the cyclin family. Cyclin AB subfamily.
发展阶段	Accumulates steadily during G2 and is abruptly destroyed at mitosis.
细胞定位	Nucleus. Cytoplasm. Cytoplasmic when associated with SCAPER.

## 图片



15% SDS-PAGE analysis of 3 µg of ab126696 (Cyclin A protein).

**Please note:** All products are "FOR RESEARCH USE ONLY. NOT FOR USE IN DIAGNOSTIC PROCEDURES"

## Our Abpromise to you: Quality guaranteed and expert technical support

- Replacement or refund for products not performing as stated on the datasheet
- Valid for 12 months from date of delivery
- Response to your inquiry within 24 hours

- We provide support in Chinese, English, French, German, Japanese and Spanish
- Extensive multi-media technical resources to help you
- We investigate all quality concerns to ensure our products perform to the highest standards

If the product does not perform as described on this datasheet, we will offer a refund or replacement. For full details of the Abpromise, please visit <https://www.abcam.cn/abpromise> or contact our technical team.

#### **Terms and conditions**

---

- Guarantee only valid for products bought direct from Abcam or one of our authorized distributors