

Recombinant Human CPS1 protein ab152296

1 图像

描述		
产品名称	重组人CPS1蛋白	
表达系统	Wheat germ	
Accession	P31327	
蛋白长度	Protein fragment	
无动物成分	No	
性质	Recombinant	
种属	Human	
序列	ANNVPATPVAWPSQEGQNPSLSSIRKLIRDGSIDLVINLPNN NTKFVHDN YVIRRTAVDSGIPLLTNFQVTKLFAEAVQKSRKVDSKSLFHY RQYSAGKA A	
预测分子量	37 kDa including tags	
氨基酸	1400 to 1500	

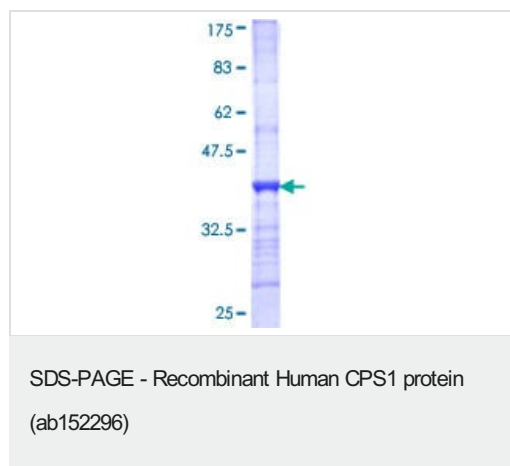
技术指标	
Our Abpromise guarantee covers the use of ab152296 in the following tested applications.	
The application notes include recommended starting dilutions; optimal dilutions/concentrations should be determined by the end user.	
应用	Western blot SDS-PAGE ELISA
形式	Liquid
补充说明	

制备和贮存	
稳定性和存储	Shipped on dry ice. Upon delivery aliquot and store at -80°C. Avoid freeze / thaw cycles. pH: 8.00 Constituents: 0.31% Glutathione, 0.79% Tris HCl

常规信息

功能	Involved in the urea cycle of ureotelic animals where the enzyme plays an important role in removing excess ammonia from the cell.
组织特异性	Primarily in the liver and small intestine.
疾病相关	<p>Defects in CPS1 are the cause of carbamoyl phosphate synthetase 1 deficiency (CPS1D) [MIM:237300]. CPS1D is an autosomal recessive disorder of the urea cycle causing hyperammonemia. Clinical features include protein intolerance, intermittent ataxia, seizures, lethargy, developmental delay and mental retardation.</p> <p>Note=Genetic variations in CPS1 influence the availability of precursors for nitric oxide (NO) synthesis and play a role in clinical situations where endogenous NO production is critically important, such as neonatal pulmonary hypertension, increased pulmonary artery pressure following surgical repair of congenital heart defects or hepatovenocclusive disease following bone marrow transplantation. Infants with neonatal pulmonary hypertension homozygous for Thr-1406 have lower L-arginine concentrations than neonates homozygous for Asn-1406.</p>
序列相似性	<p>Contains 2 ATP-grasp domains.</p> <p>Contains 1 glutamine amidotransferase type-1 domain.</p>
结构域	The type-1 glutamine amidotransferase domain is defective.
细胞定位	Mitochondrion.

图片



12.5% SDS-PAGE showing ab152296 stained with Coomassie Blue.

Please note: All products are "FOR RESEARCH USE ONLY. NOT FOR USE IN DIAGNOSTIC PROCEDURES"

Our Abpromise to you: Quality guaranteed and expert technical support

- Replacement or refund for products not performing as stated on the datasheet
- Valid for 12 months from date of delivery
- Response to your inquiry within 24 hours
- We provide support in Chinese, English, French, German, Japanese and Spanish
- Extensive multi-media technical resources to help you

- We investigate all quality concerns to ensure our products perform to the highest standards

If the product does not perform as described on this datasheet, we will offer a refund or replacement. For full details of the Abpromise, please visit <https://www.abcam.cn/abpromise> or contact our technical team.

Terms and conditions

- Guarantee only valid for products bought direct from Abcam or one of our authorized distributors