

Recombinant Human Cornulin protein ab93883

1 图像

描述

产品名称	重组人Cornulin蛋白
纯度	> 85 % SDS-PAGE. Purified using conventional chromatography techniques
表达系统	Escherichia coli
蛋白长度	Full length protein
无动物成分	No
性质	Recombinant
种属	Human
氨基酸	1 to 495

技术指标

Our **Abpromise guarantee** covers the use of **ab93883** in the following tested applications.

The application notes include recommended starting dilutions; optimal dilutions/concentrations should be determined by the end user.

应用	SDS-PAGE
形式	Liquid

制备和贮存

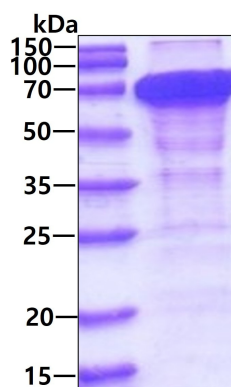
稳定性和存储	Shipped at 4°C. Upon delivery aliquot and store at -20°C or -80°C. Avoid repeated freeze / thaw cycles. pH: 7.40 Constituents: 10% Glycerol (glycerin, glycerine), PBS
--------	--

常规信息

功能	Survival factor that participates in the clonogenicity of squamous esophageal epithelium cell lines, attenuates deoxycholic acid (DCA)-induced apoptotic cell death and release of calcium. When overexpressed in oral squamous carcinom cell lines, regulates negatively cell proliferation by the induction of G1 arrest.
----	---

组织特异性	Squamous epithelia cell-specific. Expressed in the esophagus (periphery of the cells of the granular and the upper spinous layers), foreskin (granular and lower cornified cells), scalp skin (granular layer), inner root sheath of the hair follicle and in primary keratinocytes (at protein level). Expressed in the squamous epithelium of the cervix, esophagus, foreskin and larynx. Expressed in the fetal bladder and scalp skin. Expressed at very low levels in the lung, kidney, uterus, skeletal muscle, heart and fetal brain. Undetectable or barely detectable in esophageal and oral squamous cell carcinoma compared with the matched adjacent normal esophageal mucosa. Undetectable or barely detectable in larynx and esophagus from patients with pH-documented laryngopharyngeal reflux (LPR).
序列相似性	Belongs to the S100-fused protein family. Contains 1 EF-hand domain.
结构域	The EF-hand is necessary for the colony survival activity to protect cells from death induced by exposure to DCA.
细胞定位	Cytoplasm. Does not colocalize with TGM1.

图片



SDS-PAGE analysis of Recombinant Human Cornulin protein (ab93883), under reducing conditions. Proteins visualized by coomassie blue stain.

Lane 1: Molecular Weight Standards

Lane 2: 3 µg Recombinant Human Cornulin protein

SDS-PAGE - Recombinant Human Cornulin protein (ab93883)

Please note: All products are "FOR RESEARCH USE ONLY. NOT FOR USE IN DIAGNOSTIC PROCEDURES"

Our Abpromise to you: Quality guaranteed and expert technical support

- Replacement or refund for products not performing as stated on the datasheet
- Valid for 12 months from date of delivery
- Response to your inquiry within 24 hours
- We provide support in Chinese, English, French, German, Japanese and Spanish
- Extensive multi-media technical resources to help you
- We investigate all quality concerns to ensure our products perform to the highest standards

If the product does not perform as described on this datasheet, we will offer a refund or replacement. For full details of the Abpromise,

please visit <https://www.abcam.cn/abpromise> or contact our technical team.

Terms and conditions

- Guarantee only valid for products bought direct from Abcam or one of our authorized distributors