

# Recombinant human CLK3 protein ab85759

## 4 图像

描述	
产品名称	重组人CLK3蛋白
生物活性	The Specific activity of ab85759 was determined to be 75 nmol/min/mg.
纯度	> 90 % Densitometry. Affinity purified.
表达系统	Baculovirus infected Sf9 cells
蛋白长度	Full length protein
无动物成分	No
性质	Recombinant
种属	Human

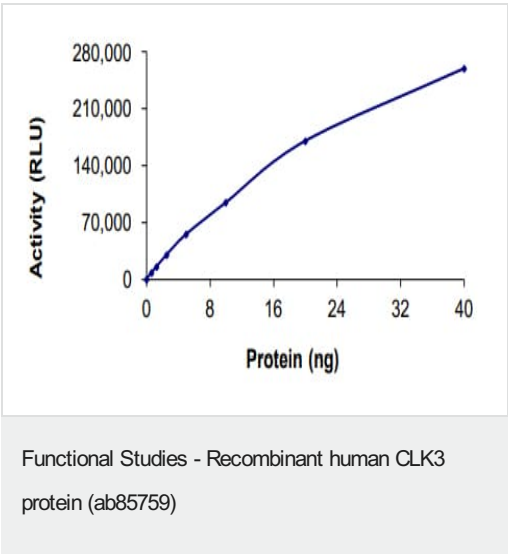
技术指标	
Our <b>Abpromise guarantee</b> covers the use of <b>ab85759</b> in the following tested applications.	
The application notes include recommended starting dilutions; optimal dilutions/concentrations should be determined by the end user.	
应用	Western blot  Functional Studies  SDS-PAGE
形式	Liquid
补充说明	<b>ab64311</b> (Myelin Basic Protein protein) can be utilized as a substrate for assessing kinase activity

制备和贮存	
稳定性和存储	Shipped on dry ice. Upon delivery aliquot and store at -80°C. Avoid freeze / thaw cycles.  pH: 7.50 Constituents: 0.0038% EGTA, 0.00174% PMSF, 0.00385% DTT, 0.79% Tris HCl, 0.00292% EDTA, 25% Glycerol (glycerin, glycerine), 0.87% Sodium chloride  This product is an active protein and may elicit a biological response in vivo, handle with caution.

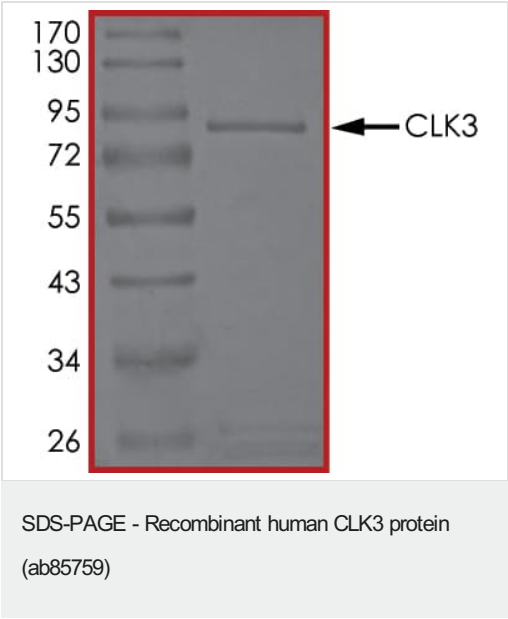
常规信息

功能	Phosphorylates serine- and arginine-rich (SR) proteins of the spliceosomal complex. May be a constituent of a network of regulatory mechanisms that enable SR proteins to control RNA splicing. Phosphorylates serines, threonines and tyrosines.
序列相似性	Belongs to the protein kinase superfamily. CMGC Ser/Thr protein kinase family. Lammer subfamily. Contains 1 protein kinase domain.
翻译后修饰	Autophosphorylates on all three types of residues.
细胞定位	Nucleus. Cytoplasm. Cytoplasmic vesicle > secretory vesicle > acrosome.

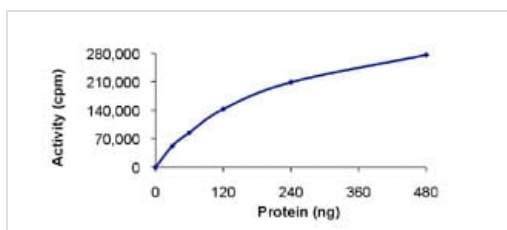
图片



The specific activity of CLK3 (ab85759) was determined to be 28.9 nmol/min/mg as per activity assay protocol and was equivalent to 80 nmol/min/mg as per radiometric assay



SDS PAGE analysis of ab85759



The Specific activity of ab85759 was determined to be 75 nmol/min/mg.

Functional Studies - Recombinant human CLK3 protein (ab85759)



SDS-PAGE showing ab85759 at approximately 86kDa.

SDS-PAGE - Recombinant human CLK3 protein (ab85759)

**Please note:** All products are "FOR RESEARCH USE ONLY. NOT FOR USE IN DIAGNOSTIC PROCEDURES"

### Our Abpromise to you: Quality guaranteed and expert technical support

- Replacement or refund for products not performing as stated on the datasheet
- Valid for 12 months from date of delivery
- Response to your inquiry within 24 hours
- We provide support in Chinese, English, French, German, Japanese and Spanish
- Extensive multi-media technical resources to help you
- We investigate all quality concerns to ensure our products perform to the highest standards

If the product does not perform as described on this datasheet, we will offer a refund or replacement. For full details of the Abpromise, please visit <https://www.abcam.cn/abpromise> or contact our technical team.

### Terms and conditions

- Guarantee only valid for products bought direct from Abcam or one of our authorized distributors