

Recombinant Human CENPE protein ab158097

1 图像

描述	
产品名称	重组人CENPE蛋白
表达系统	Wheat germ
Accession	<u>Q02224</u>
蛋白长度	Protein fragment
无动物成分	No
性质	Recombinant
种属	Human
序列	TPVSFDETLTALQFASTAKYMKNTPYVNEVSTDEALLKRYRK EIMDLKKQ LEEVSLETRAQAMEKDQLAQLLEEKDLLQKVQNEKIENLTRM LVTSSSLT LQQELKAKRKR
氨基酸	309 to 419
标签	GST tag N-Terminus

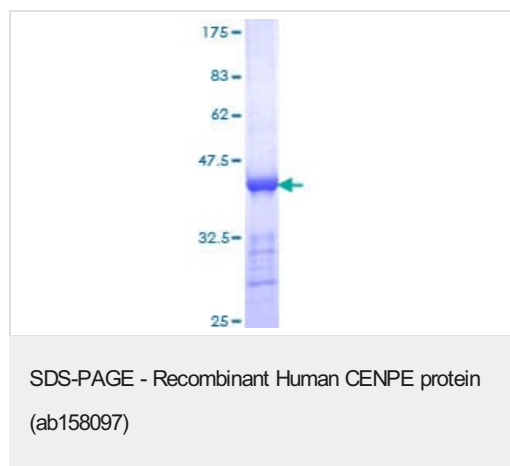
技术指标	
Our <u>Abpromise guarantee</u> covers the use of ab158097 in the following tested applications.	
The application notes include recommended starting dilutions; optimal dilutions/concentrations should be determined by the end user.	
应用	Western blot ELISA
形式	Liquid
补充说明	

制备和贮存	
稳定性和存储	Shipped on dry ice. Upon delivery aliquot and store at -80°C. Avoid freeze / thaw cycles. pH: 8.00 Constituents: 0.31% Glutathione, 0.79% Tris HCl

常规信息

功能	Essential for the maintenance of chromosomal stability through efficient stabilization of microtubule capture at kinetochores. Plays a key role in the movement of chromosomes toward the metaphase plate during mitosis. Is a slow plus end-directed motor whose activity is essential for metaphase chromosome alignment. Couples chromosome position to microtubule depolymerizing activity. The highly processive microtubule-dependent motor activity of CENPE serves to power chromosome congression and provides a flexible, motile tether linking kinetochores to dynamic spindle microtubules. Necessary for the mitotic checkpoint signal at individual kinetochores to prevent aneuploidy due to single chromosome loss. Required for the efficient recruitment of BUBR1, MAD1 and MAD2 to attached and newly unattached kinetochores. Stimulates mammalian BUBR1 kinase activity. Accumulates just before mitosis at the G2 phase of the cell cycle.
疾病相关	Microcephaly 13, primary, autosomal recessive
序列相似性	Belongs to the TRAFAC class myosin-kinesin ATPase superfamily. Kinesin family. Contains 1 kinesin motor domain.
结构域	The protein is composed of a N-terminal kinesin-motor domain involved in the chromosome movements, a long coil-coiled region involved in the homodimerization and an inhibitory C-tail involved in autoinhibition of the N-terminal catalytic part.
翻译后修饰	The C-terminal inhibitory domain is phosphorylated. Phosphorylation relieves autoinhibition of the kinetochore motor. Sumoylated with SUMO2 and SUMO3. The sumoylation mediates the association to the kinetochore.
细胞定位	Chromosome, centromere, kinetochore. Cytoplasm, cytoskeleton, spindle. Associates with kinetochores during congression (as early as prometaphase), relocates to the spindle midzone at anaphase, and is quantitatively discarded at the end of the cell division.

图片



ab158097 on a 12.5% SDS-PAGE stained with Coomassie Blue.

Please note: All products are "FOR RESEARCH USE ONLY. NOT FOR USE IN DIAGNOSTIC PROCEDURES"

Our Abpromise to you: Quality guaranteed and expert technical support

- Replacement or refund for products not performing as stated on the datasheet

- Valid for 12 months from date of delivery
- Response to your inquiry within 24 hours
- We provide support in Chinese, English, French, German, Japanese and Spanish
- Extensive multi-media technical resources to help you
- We investigate all quality concerns to ensure our products perform to the highest standards

If the product does not perform as described on this datasheet, we will offer a refund or replacement. For full details of the Abpromise, please visit <https://www.abcam.cn/abpromise> or contact our technical team.

Terms and conditions

- Guarantee only valid for products bought direct from Abcam or one of our authorized distributors