

Recombinant Human CDCP1 protein ab131825

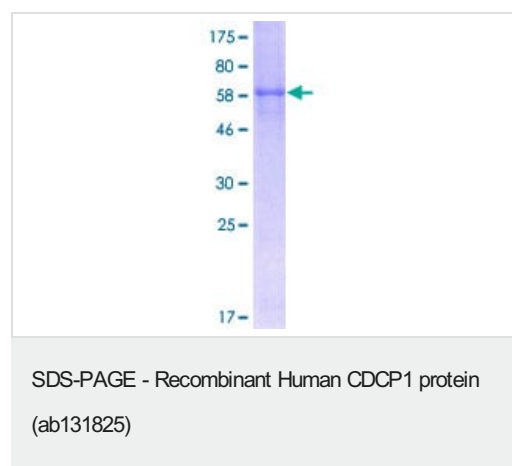
1 图像

| 描述 | |
|-----------|--|
| 产品名称 | 重组人CDCP1蛋白 |
| 表达系统 | Wheat germ |
| Accession | <u>Q9H5V8-3</u> |
| 蛋白长度 | Full length protein |
| 无动物成分 | No |
| 性质 | Recombinant |
| 种属 | Human |
| 序列 | MAGLNCGVSIALLGVLLLGAARLPRGAFAFEIALPRESNITV LIKLGTPT LLAKPCYIVISKRHITMLSIKSGERIVFTFSCQSPENHFVIE IQKNIDCM SGPCPFGEVQLQPSTSLPTLNRTFIWDVKAHKSIGLELQFS IPRLRQIG PGESCPDGVTHTSISGRIDATVVRIGTFCSNGTVSRIKMQEGV KMALHLPW FHPRNVSGFSIANRSSIKRLCIIESVFEGEGSATLMSANYPE GFPEDELM TWQFVVPAPHLRASVSFLNFNLSNCERKEERVEYYIPGSTTNP EVFKLEDK QPGNMAGNFNLSLQGCDQDAQSPGILRLQFQVLVQHPQNESS E |
| 预测分子量 | 64 kDa including tags |
| 氨基酸 | 1 to 343 |
| 标签 | GST tag N-Terminus |

| 技术指标 | |
|--|-----------------------------------|
| Our Abpromise guarantee covers the use of ab131825 in the following tested applications. | |
| The application notes include recommended starting dilutions; optimal dilutions/concentrations should be determined by the end user. | |
| 应用 | SDS-PAGE ELISA Western blot |

| | |
|--------|---|
| 形式 | Liquid |
| 制备和贮存 | |
| 稳定性和存储 | <p>Shipped on dry ice. Upon delivery aliquot and store at -80°C. Avoid freeze / thaw cycles.</p> <p>pH: 8.00</p> <p>Constituents: 0.31% Glutathione, 0.79% Tris HCl</p> |
| 常规信息 | |
| 功能 | <p>May be involved in cell adhesion and cell matrix association. May play a role in the regulation of anchorage versus migration or proliferation versus differentiation via its phosphorylation. May be a novel marker for leukemia diagnosis and for immature hematopoietic stem cell subsets.</p> <p>Belongs to the tetraspanin web involved in tumor progression and metastasis.</p> |
| 组织特异性 | <p>Highly expressed in mitotic cells with low expression during interphase. Detected at highest levels in skeletal muscle and colon with lower levels in kidney, small intestine, placenta and lung. Up-regulated in a number of human tumor cell lines, as well as in colorectal cancer, breast carcinoma and lung cancer. Also expressed in cells with phenotypes reminiscent of mesenchymal stem cells and neural stem cells.</p> |
| 序列相似性 | Contains 1 CUB domain. |
| 翻译后修饰 | <p>Phosphorylated on tyrosine by kinases of the SRC family such as SRC and YES as well as by the protein kinase C gamma/PRKCG. Dephosphorylated by phosphotyrosine phosphatases. Also phosphorylated by suramin, a heparin analog. Tyrosine phosphorylated in response to dissociation of integrin alpha-6 beta-4 from laminin-5.</p> <p>N-glycosylated.</p> <p>A soluble form may also be produced by proteolytic cleavage at the cell surface (shedding). Another peptide of 80 kDa (p80) is present in cultured keratinocytes probably due to tryptic cleavage at an unidentified site on its N-terminal side. Converted to p80 by plasmin, a trypsin-like protease.</p> |
| 细胞定位 | Secreted and Cell membrane. Shedding may also lead to a soluble peptide. |

图片



ab131825 on 12.5% SDS-PAGE, stained with coomassie blue

Please note: All products are "FOR RESEARCH USE ONLY. NOT FOR USE IN DIAGNOSTIC PROCEDURES"

Our Abpromise to you: Quality guaranteed and expert technical support

- Replacement or refund for products not performing as stated on the datasheet
- Valid for 12 months from date of delivery
- Response to your inquiry within 24 hours

- We provide support in Chinese, English, French, German, Japanese and Spanish
- Extensive multi-media technical resources to help you
- We investigate all quality concerns to ensure our products perform to the highest standards

If the product does not perform as described on this datasheet, we will offer a refund or replacement. For full details of the Abpromise, please visit <https://www.abcam.cn/abpromise> or contact our technical team.

Terms and conditions

- Guarantee only valid for products bought direct from Abcam or one of our authorized distributors