

Recombinant Human CD19 protein ab158046

1 图像

描述	
产品名称	重组人CD19蛋白
表达系统	Wheat germ
Accession	<u>P15391</u>
蛋白长度	Full length protein
无动物成分	No
性质	Recombinant
种属	Human
序列	MPPPRLLFFLLFLTPMEVRPEEPLVVKVEEGDNAVQLCKGT SDGPTQQL TWSRESPLKPFLKLSLGLPGLGIHMRPLAIWLFIFNVSQQMG GFYLCQPG PPSEKAWQPGWTVNVEGSGELFRWNVSDLGGLGCGLKNRSSE GPSSPSGK LMSPKLYVWAKDRPEIWEGEPPCLPPRDSLNQSLSQDLTMAP GSTLWLSC GVPPDSVSRGPLSWTHVHPKGPKSLLSLELKDDRPARDMWVM ETGLLLPR ATAQDAGKYYCHRGNTMSFHLEITARPVLWHWLLRTGGWKV SAVTLAYL IFCLCSLVGILHLQRALVLRKRKRMTDPTRRFFKVTPPPGS GPQNQYGN VLSLPTPTSGLGRAQRWAAGLGGTAPSYGNPSSDVQADGALG SRSPPGVG PEEEEGEGYEEP DSEEDSEFYENDSNLGQDQLSQDGSYENP EDEPLGPE DEDSFSNAESYENEDEELTQPVARTMDFLSPHGSAWDPSREA TSLGSQSY EDMRGILYAAPQLRSIRGQPGPNHEEDADSYENMDNPDGPD AWGGGGRM GTWSTR
预测分子量	88 kDa including tags
氨基酸	1 to 556
标签	GST tag N-Terminus

技术指标

Our **Abpromise guarantee** covers the use of **ab158046** in the following tested applications.

The application notes include recommended starting dilutions; optimal dilutions/concentrations should be determined by the end user.

应用	Western blot
	ELISA
形式	Liquid
补充说明	Protein concentration is lot specific and is above or equal to 0.12 ug/uL.

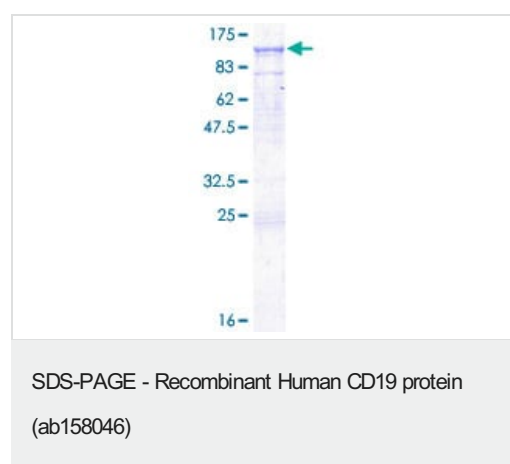
制备和贮存

稳定性和存储	Shipped on dry ice. Upon delivery aliquot and store at -80°C. Avoid freeze / thaw cycles.
	pH: 8.00
	Constituents: 0.31% Glutathione, 0.79% Tris HCl

常规信息

功能	Assembles with the antigen receptor of B lymphocytes in order to decrease the threshold for antigen receptor-dependent stimulation.
疾病相关	Defects in CD19 are the cause of immunodeficiency common variable type 3 (CVID3) [MIM:613493]; also called antibody deficiency due to CD19 defect. CVID3 is a primary immunodeficiency characterized by antibody deficiency, hypogammaglobulinemia, recurrent bacterial infections and an inability to mount an antibody response to antigen. The defect results from a failure of B-cell differentiation and impaired secretion of immunoglobulins; the numbers of circulating B cells is usually in the normal range, but can be low.
序列相似性	Contains 2 Ig-like C2-type (immunoglobulin-like) domains.
翻译后修饰	Phosphorylated on serine and threonine upon DNA damage, probably by ATM or ATR. Phosphorylated on tyrosine following B-cell activation.
细胞定位	Membrane.

图片



ab158046 on a 12.5% SDS-PAGE stained with Coomassie Blue.

Please note: All products are "FOR RESEARCH USE ONLY. NOT FOR USE IN DIAGNOSTIC PROCEDURES"

Our Abpromise to you: Quality guaranteed and expert technical support

- Replacement or refund for products not performing as stated on the datasheet
- Valid for 12 months from date of delivery
- Response to your inquiry within 24 hours
- We provide support in Chinese, English, French, German, Japanese and Spanish
- Extensive multi-media technical resources to help you
- We investigate all quality concerns to ensure our products perform to the highest standards

If the product does not perform as described on this datasheet, we will offer a refund or replacement. For full details of the Abpromise, please visit <https://www.abcam.cn/abpromise> or contact our technical team.

Terms and conditions

- Guarantee only valid for products bought direct from Abcam or one of our authorized distributors