

Recombinant Human CD146 protein (His tag) ab155626

1 图像

描述

产品名称	重组人CD146蛋白(His tag)
纯度	> 95 % SDS-PAGE. >95% as determined by SDS-PAGE.
内毒素水平	< 1.000 Eu/μg
表达系统	HEK 293 cells
Accession	<u>P43121</u>
蛋白长度	Protein fragment
无动物成分	No
性质	Recombinant
种属	Human
序列	<pre> PGAEQ PAPELVEVEV GSTALLKCGL SQSQGNLSHV DWFSVHKEKR TLIFRVRQGQ GQSEPGEYEQ RLSLQDRGAT LALTQVTPQD ERIFLCQGKR PRSQEYRIQL RVYKAPEEPN IQVNPLGIPV NSKEPEEVAT CVGRNGYPIP QVIWYKNGRP LKEEKNRVHI QSSQTVESSG LYTLQSILKA QLVKEDKDAQ FYCELNYRLP SGNHMKESRE VTVPVFYPTK KWLLEVEPVG MLKEGDRVEI RCLADGNPPP HFSISKQNPS TREAEETTNT DNGVLVLEPA RKEHSGRYEC QGLDLDTMIS LLSEPEQLLV NYVSDVRVSP AAPERQEGSS LTLTCEAESS QDLEFQWLRE ETGQVLERGP VLQLHDLKRE AGGGYRCVAS VPSIPGLNRT QLVNVAIFGP PWMAFKERKV WVKENMVLNL SCEASGHPRP TISWNVNGTA SEQDQDPQRV LSTLNVLVTP ELLETGVECT ASNDLGKNTS ILFLELVNLT TLTPDSNTTT GLSTSTASPH TRANSTSTER KLPEPESRG </pre>
预测分子量	61 kDa including tags
氨基酸	24 to 559
标签	His tag C-Terminus

Our **Abpromise guarantee** covers the use of **ab155626** in the following tested applications.

The application notes include recommended starting dilutions; optimal dilutions/concentrations should be determined by the end user.

应用 SDS-PAGE

形式 Lyophilized

制备和贮存

稳定性和存储 Shipped at 4°C. Upon delivery aliquot. Store at -20°C or -80°C. Avoid freeze / thaw cycle.

pH: 7.40

Constituents: 95% PBS, 5% Trehalose

复溶 It is recommended to reconstitute the lyophilized protein in sterile deionized water to a final concentration of 200 µg/mL. Solubilize for 30 to 60 minutes at room temperature with occasional gentle mixing. Carrier protein (0.1% HSA or BSA) is strongly recommended for further dilution and long term storage.

常规信息

功能 Plays a role in cell adhesion, and in cohesion of the endothelial monolayer at intercellular junctions in vascular tissue. Its expression may allow melanoma cells to interact with cellular elements of the vascular system, thereby enhancing hematogeneous tumor spread. Could be an adhesion molecule active in neural crest cells during embryonic development. Acts as surface receptor that triggers tyrosine phosphorylation of FYN and PTK2, and a transient increase in the intracellular calcium concentration.

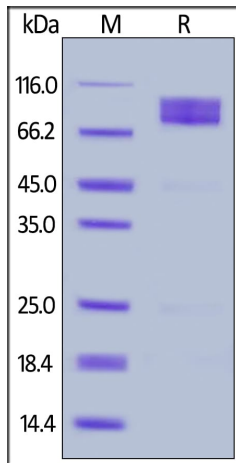
组织特异性 Detected in endothelial cells in vascular tissue throughout the body. May appear at the surface of neural crest cells during their embryonic migration. Appears to be limited to vascular smooth muscle in normal adult tissues. Associated with tumor progression and the development of metastasis in human malignant melanoma. Expressed most strongly on metastatic lesions and advanced primary tumors and is only rarely detected in benign melanocytic nevi and thin primary melanomas with a low probability of metastasis.

序列相似性 Contains 3 Ig-like C2-type (immunoglobulin-like) domains.

Contains 2 Ig-like V-type (immunoglobulin-like) domains.

细胞定位 Membrane.

图片



SDS PAGE of reduced ab155626 stained overnight with Coomassie Blue. The protein migrates as 70-100 kDa under reducing conditions due to glycosylation.

SDS-PAGE - Recombinant Human CD146 protein (ab155626)

Please note: All products are "FOR RESEARCH USE ONLY. NOT FOR USE IN DIAGNOSTIC PROCEDURES"

Our Abpromise to you: Quality guaranteed and expert technical support

- Replacement or refund for products not performing as stated on the datasheet
- Valid for 12 months from date of delivery
- Response to your inquiry within 24 hours
- We provide support in Chinese, English, French, German, Japanese and Spanish
- Extensive multi-media technical resources to help you
- We investigate all quality concerns to ensure our products perform to the highest standards

If the product does not perform as described on this datasheet, we will offer a refund or replacement. For full details of the Abpromise, please visit <https://www.abcam.cn/abpromise> or contact our technical team.

Terms and conditions

- Guarantee only valid for products bought direct from Abcam or one of our authorized distributors