

Recombinant Human CD10 protein ab155720

1 图像

描述

产品名称	重组人CD10蛋白	
纯度	> 95 % SDS-PAGE.	
内毒素水平	< 1.000 Eu/μg	
表达系统	HEK 293 cells	
Accession	<u>P08473</u>	
蛋白长度	Protein fragment	
无动物成分	No	
性质	Recombinant	
种属	Human	
序列		<p>YDDGICKSSDCIKSAARLIQNMDATTEPCTDFFKYACGGWLK RNVIPETS SRYGNFDILRDELEVVLKDVLPKTEIDIVAVQKAKALYRSC INESAIDS RGGEPLKLLPDIYGWPVATENWEQKYGASWTAEKAIQNLNS KYGKKVLI NLFVGTDDKNSVNHVIHIDQRLGLPSRDYYECTGIYKEACT AYVDFMIS VARLIRQEERLPIDENQLALEMNKVMLEKEIANATAKPEDR NDPMLLYN KMTLAQIQNNFSLEINGKPFSWLNFTNEIMSTVNISITNEED VVVYAPEY LTKLKPILTKYSARDLQNLMSWRFIMDLVSSLSRITYKESRNA FRKALYGT TSETATWRRRCANYVNGNMENAVGRLYVEAAFAGESKHVVEDL IAQIREVF IQTLDDL TWMDAETKKRAEEKALAIKERIGYPDDIVSNDNKL NNEYLELN YKEDEYFENIIQNLKFSQSKQLKKLREKVDKDEWISGAAVVN AFYSSGRN QIVFPAGILQPPFFSAQQSNSLNYYGGIGMVGHEITHGFDDN GRNFNKDG DLVDWWTQQSASNFKEQSQCMVYQYGNFSDLAGGQHLNGIN TLGENIAD</p>

NGGLGQAYRAYQNYIKKNGEEKLLPGLDLNHHKQLFFLNFAQV
WCGTYRPE
YAVNSIKTDVHSPGNFRIIGTLQNSAEFSEAFHCRKNSYMN
EKKCRVW

预测分子量	107 kDa including tags
氨基酸	52 to 750
标签	Fc tag N-Terminus
额外的序列信息	This protein carries a human IgG1 Fc tag at the N-terminus.

技术指标

Our **Abpromise guarantee** covers the use of **ab155720** in the following tested applications.

The application notes include recommended starting dilutions; optimal dilutions/concentrations should be determined by the end user.

应用	SDS-PAGE
形式	Lyophilized

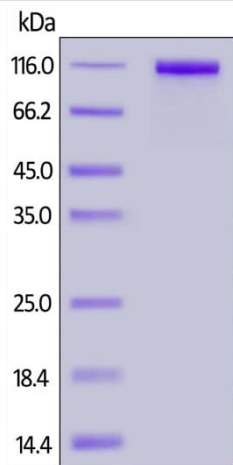
制备和贮存

稳定性和存储	Shipped at 4°C. Store at +4°C short term (1-2 weeks). Upon delivery aliquot. Store at -20°C or -80°C. Avoid freeze / thaw cycle. pH: 7.4 Constituents: Tris, Glycine, L-Arginine, Sodium chloride
复溶	Reconstitute with sterile deionized water to a concentration of 400 µg/ml.

常规信息

功能	Thermolysin-like specificity, but is almost confined on acting on polypeptides of up to 30 amino acids. Biologically important in the destruction of opioid peptides such as Met- and Leu-enkephalins by cleavage of a Gly-Phe bond. Able to cleave angiotensin-1, angiotensin-2 and angiotensin 1-9. Involved in the degradation of atrial natriuretic factor (ANF). Displays UV-inducible elastase activity toward skin preelastic and elastic fibers.
序列相似性	Belongs to the peptidase M13 family.
细胞定位	Cell membrane.

图片



SDS-PAGE - Recombinant Human CD10 protein
(ab155720)

ab155720 on SDS-PAGE under reducing conditions. The gel was stained overnight with Coomassie Blue. The protein migrates as 106-120 kDa under reducing conditions due to glycosylation.

Please note: All products are "FOR RESEARCH USE ONLY. NOT FOR USE IN DIAGNOSTIC PROCEDURES"

Our Abpromise to you: Quality guaranteed and expert technical support

- Replacement or refund for products not performing as stated on the datasheet
- Valid for 12 months from date of delivery
- Response to your inquiry within 24 hours
- We provide support in Chinese, English, French, German, Japanese and Spanish
- Extensive multi-media technical resources to help you
- We investigate all quality concerns to ensure our products perform to the highest standards

If the product does not perform as described on this datasheet, we will offer a refund or replacement. For full details of the Abpromise, please visit <https://www.abcam.cn/abpromise> or contact our technical team.

Terms and conditions

- Guarantee only valid for products bought direct from Abcam or one of our authorized distributors