

Recombinant Human BAT3/BAG-6 protein ab152829

1 图像

描述	
产品名称	重组人BAT3/BAG-6蛋白
表达系统	Wheat germ
Accession	<u>P46379-2</u>
蛋白长度	Full length protein
无动物成分	No
性质	Recombinant
种属	Human
序列	MEPNDSTSTAVEEPDSLEVLVKTLDSQTRTFIVGAQMNVKEF KEHIAASV SIPSEKQRLIYQGRVLQDDKKLQEYNVGGKVIHLVERAPPQT HLP SGASS GTGSASATHGGGSPPGTRGPGASVHDRNANSYVMVGTFNLPS DGS AVDVH INMEQAPIQSEPRVRLVMAQHMIRDIQTLLSRMECRGGPQPQ HSQPPPQP PAVTPEPVALSSQTSEPVESEAPPREPMEAEVEERAPAQNP ELTPGPAP AGPTPAPETNAPNHPSPAEYVEVLQELQRLESRLQPFLQRY EVLGAAAT TDYNNNHEGREEDQRLINLVGESLRLLGNTFVALSDLRCNLA CTPPRHLH VVRPMSHYTTMVLQQAIIPIQINVGTTVTMTGNGTRPPPTP NAEAPPPG PGQASSVAPSSTNVESSAEGAPPPGPAPPPATSHPRVIRISH QSVEPVVM MHMNIQDSGTQPGGVPSAPTGPLGPPGHGQTLGQQVPGFPTA PTRVVIAR PTPPQARPSHPGGPPVSGTLQGAGLGTNASLAQMVSGLVGQL LMQPVLVA QGTPGMAPPPAPATASASAGTTNTATTAGPAPGGPAQPPPTP QPSMADLQ FSQLLGNLLGPAGPGAGGSGVASPTITVAMPGVPAFLQGMTD FLQATQTA PPPPPPPPPPPAPEQQTMPPPGSPSGGAGSPGGLGLESLSPE FFTSVVQ

GVLSSLLGSLGARAGSSESIAAFIQRLSGSSNIFEPGADGAL
GFFGALLS
LLCQNFMSVDVVMMLLHGHFQPLQRLQPQLRSFFHQHYLGGQE
PTPSNIRM
ATHTLITGLEEYVRESFSLVQVQPGVDIIRTNLEFLQEQFNS
IAAHVLHC
TDSGFGARLLELCNQGLFECLALNLHCLGGQQMELAAVINGR
IRRMSRGV
NPSLVSWLTTMMGLRLQVVLEHMPVGPDAILRYVRRVGDPPQ
PLPEEPME
VQGAERASPEPQRENASPAGTTAEEMSRGPPPAPEGGSRD
EQDGASAE
TEPWAAVPEWVPIIQQDIQSQRKVQPPLSDAYLSGMPA
KRRKTMQG
EGPQLLLSEAVSRAAKAAGARPLTSPESLSRDLEAPEVQESY
RQQLRSDI QKRLQEDPNYSPQRFPAQRAFADDP

预测分子量	145 kDa including tags
氨基酸	1 to 1126

技术指标

Our Abpromise guarantee covers the use of ab152829 in the following tested applications.	
The application notes include recommended starting dilutions; optimal dilutions/concentrations should be determined by the end user.	
应用	ELISA Western blot SDS-PAGE
形式	Liquid
补充说明	This product was previously labelled as BAT3.

制备和贮存

稳定性和存储	Shipped on dry ice. Upon delivery aliquot and store at -80°C. Avoid freeze / thaw cycles. pH: 8.00 Constituents: 0.31% Glutathione, 0.79% Tris HCl
--------	--

常规信息

功能	Chaperone that plays a key role in various processes such as apoptosis, insertion of tail-anchored (TA) membrane proteins to the endoplasmic reticulum membrane and regulation of chromatin. Acts in part by regulating stability of proteins and their degradation by the proteasome. Participates in endoplasmic reticulum stress-induced apoptosis via its interaction with AIFM1/AIF by regulating AIFM1/AIF stability and preventing its degradation. Also required during spermatogenesis for synaptonemal complex assembly via its interaction with HSPA2, by inhibiting polyubiquitination and subsequent proteasomal degradation of HSPA2. Required for selective ubiquitin-mediated degradation of defective nascent chain polypeptides by the
----	--

proteasome. In this context, may play a role in immuno-proteasomes to generate antigenic peptides via targeted degradation, thereby playing a role in antigen presentation in immune response. Key component of the BAG6/BAT3 complex, a cytosolic multiprotein complex involved in the post-translational delivery of tail-anchored (TA) membrane proteins to the endoplasmic reticulum membrane. TA membrane proteins, also named type II transmembrane proteins, contain a single C-terminal transmembrane region. BAG6/BAT3 acts by facilitating TA membrane proteins capture by ASNA1/TRC40: it is recruited to ribosomes synthesizing membrane proteins, interacts with the transmembrane region of newly released TA proteins and transfers them to ASNA1/TRC40 for targeting to the endoplasmic reticulum membrane. Also involved in DNA damage-induced apoptosis: following DNA damage, accumulates in the nucleus and forms a complex with p300/EP300, enhancing p300/EP300-mediated p53/TP53 acetylation leading to increase p53/TP53 transcriptional activity. When nuclear, may also act as a component of some chromatin regulator complex that regulates histone 3 'Lys-4' dimethylation (H3K4me2).

序列相似性

Contains 1 ubiquitin-like domain.

翻译后修饰

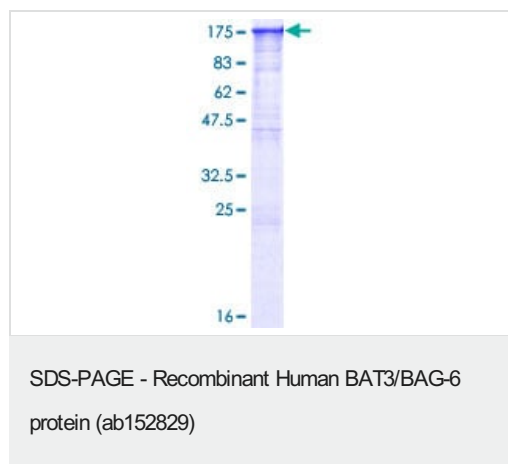
Cleavage by caspase-3 releases a C-terminal peptide that plays a role in ricin-induced apoptosis.

In case of infection by *L.pneumophila*, ubiquitinated by the SCF(LegU1) complex.

细胞定位

Cytoplasm > cytosol. Nucleus. The C-terminal fragment generated by caspase-3 is cytoplasmic.

图片



12.5% SDS-PAGE analysis of ab152829 stained with Coomassie Blue.

Please note: All products are "FOR RESEARCH USE ONLY. NOT FOR USE IN DIAGNOSTIC PROCEDURES"

Our Abpromise to you: Quality guaranteed and expert technical support

- Replacement or refund for products not performing as stated on the datasheet
- Valid for 12 months from date of delivery
- Response to your inquiry within 24 hours
- We provide support in Chinese, English, French, German, Japanese and Spanish
- Extensive multi-media technical resources to help you
- We investigate all quality concerns to ensure our products perform to the highest standards

If the product does not perform as described on this datasheet, we will offer a refund or replacement. For full details of the Abpromise,

please visit <https://www.abcam.cn/abpromise> or contact our technical team.

Terms and conditions

- Guarantee only valid for products bought direct from Abcam or one of our authorized distributors