

Recombinant human BACE1 protein (Active) ab168075

2 图像

描述

产品名称	重组人BACE1蛋白(Active)
生物活性	Determined using a β -Secretase Activity Assay Kit. Specific units > 120x10 ³ units/mg. One unit is defined as the amount of enzyme that produces 1 pmol/min EDANS by hydrolyzing the substrate BVT9964 (NH ₂ -Arg-Glu(EDANS)-Glu-Val-Asn-Leu-Asp-Ala-Glu-Phe-Lys(DABCYL)-Arg-COOH) at 37°C in 100 mM acetate buffer pH 4.0.
纯度	> 90 % SDS-PAGE.
表达系统	Insect cells
Accession	<u>P56817</u>
蛋白长度	Protein fragment
无动物成分	No
性质	Recombinant
种属	Human
预测分子量	47 kDa
氨基酸	46 to 460
额外的序列信息	Mature protease domain.

技术指标

Our **Abpromise guarantee** covers the use of **ab168075** in the following tested applications.

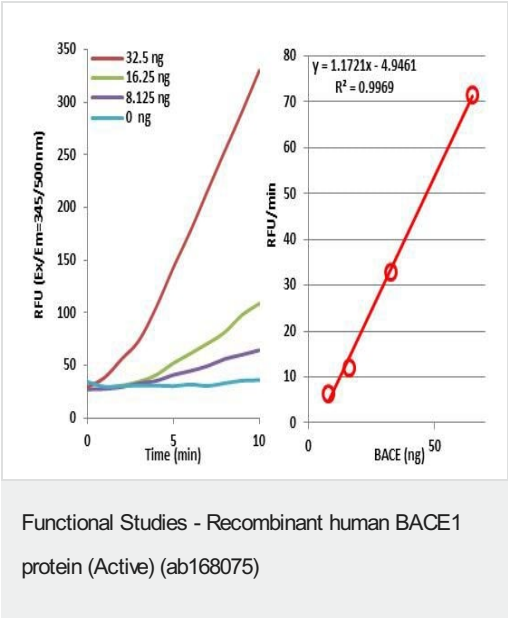
The application notes include recommended starting dilutions; optimal dilutions/concentrations should be determined by the end user.

应用	SDS-PAGE Functional Studies
形式	Liquid
补充说明	This product is manufactured by BioVision, an Abcam company and was previously called 7609 Active Recombinant Human beta-Secretase 1 - BACE-1. 7609-5 is the same size as the 5 µg size of ab168075. Produced using non-baculovirus insect cells.

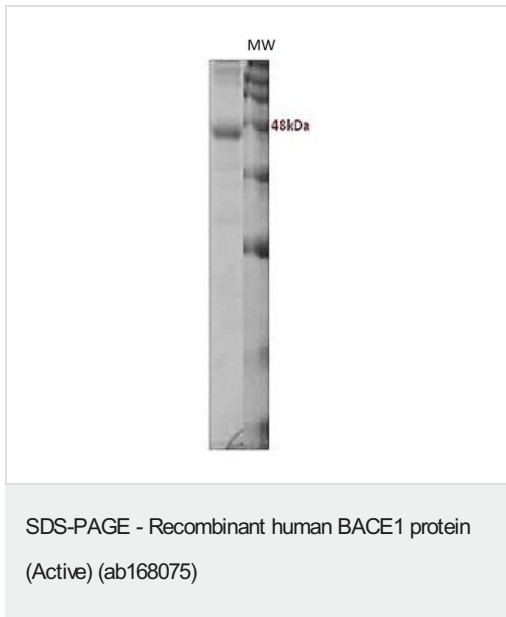
制备和贮存

稳定性 and 存储	<p>Shipped at 4°C. Upon delivery aliquot and store at -80°C. Avoid freeze / thaw cycles.</p> <p>Constituents: 50% Glycerol (glycerin, glycerine), PBS</p> <p>This product is an active protein and may elicit a biological response in vivo, handle with caution.</p>
常规信息	
功能	Responsible for the proteolytic processing of the amyloid precursor protein (APP). Cleaves at the N-terminus of the A-beta peptide sequence, between residues 671 and 672 of APP, leads to the generation and extracellular release of beta-cleaved soluble APP, and a corresponding cell-associated C-terminal fragment which is later released by gamma-secretase.
组织特异性	Expressed at high levels in the brain and pancreas. In the brain, expression is highest in the substantia nigra, locus coruleus and medulla oblongata.
序列相似性	Belongs to the peptidase A1 family.
结构域	The transmembrane domain is necessary for its activity. It determines its late Golgi localization and access to its substrate, APP.
翻译后修饰	Glycosylated.
细胞定位	Membrane. Golgi apparatus > trans-Golgi network. Endoplasmic reticulum. Endosome. Cell surface. Predominantly localized to the later Golgi/trans-Golgi network (TGN) and minimally detectable in the early Golgi compartments. A small portion is also found in the endoplasmic reticulum, endosomes and on the cell surface.

图片



Example of BACE1 Activity Assay.



SDS-PAGE analysis of ab168075.

Please note: All products are "FOR RESEARCH USE ONLY. NOT FOR USE IN DIAGNOSTIC PROCEDURES"

Our Abpromise to you: Quality guaranteed and expert technical support

- Replacement or refund for products not performing as stated on the datasheet
- Valid for 12 months from date of delivery
- Response to your inquiry within 24 hours
- We provide support in Chinese, English, French, German, Japanese and Spanish
- Extensive multi-media technical resources to help you
- We investigate all quality concerns to ensure our products perform to the highest standards

If the product does not perform as described on this datasheet, we will offer a refund or replacement. For full details of the Abpromise, please visit <https://www.abcam.cn/abpromise> or contact our technical team.

Terms and conditions

- Guarantee only valid for products bought direct from Abcam or one of our authorized distributors