

# Recombinant Human Annexin A1/ANXA1 protein ab86446

[1 References](#) [1 图像](#)

### 描述

产品名称	重组人Annexin A1/ANXA1蛋白		
纯度	> 90 % SDS-PAGE. ab86446 is purified using conventional chromatography techniques.		
表达系统	Escherichia coli		
Accession	<b><u>P04083</u></b>		
蛋白长度	Full length protein		
无动物成分	No		
性质	Recombinant		
种属	Human		
序列	<pre> MAMVSEFLKQ AWFIEENEEQE YVQTVKSSKG GPGSAVSPYP TFNPSSDVAA LHKAIMVKGV DEATIIDILT KRNNARQQI KAAYLQETGK PLDETLKKAL TGHLEEVVLA LLKTPAQFDA DELRAAMKGL GTDEDTLIEI LASRTNKEIR DINRVYREEL KRDLAKDITS DTSGDFRNAL LSLAKGDRSE DFGVNEDLAD SDARALYEAG ERRKGTDVNV FNTILTTRSY PQLRRVFQKY TKYSKHMNK VLDLELKGDI EKCLTAIVKC ATSKPAFFAE KLHQAMKGVG TRHKALIRIM VSRSEIDMND IKAFYQKMYG ISLCQAILDE TKGDYEKILV ALCGGN </pre>		
预测分子量	39 kDa		
氨基酸	1 to 346		

### 技术指标

Our **Abpromise guarantee** covers the use of **ab86446** in the following tested applications.

The application notes include recommended starting dilutions; optimal dilutions/concentrations should be determined by the end user.

应用	SDS-PAGE
形式	Liquid

### 制备和贮存

## 稳定性和存储

Shipped at 4°C. Store at +4°C short term (1-2 weeks). Upon delivery aliquot. Store at -20°C or -80°C. Avoid freeze / thaw cycle.

pH: 8.00

Constituents: 0.0154% DTT, 0.316% Tris HCl, 10% Glycerol (glycerin, glycerine), 0.58% Sodium chloride

## 常规信息

### 功能

Calcium/phospholipid-binding protein which promotes membrane fusion and is involved in exocytosis. This protein regulates phospholipase A2 activity. It seems to bind from two to four calcium ions with high affinity.

### 序列相似性

Belongs to the annexin family.  
Contains 4 annexin repeats.

### 结构域

A pair of annexin repeats may form one binding site for calcium and phospholipid.

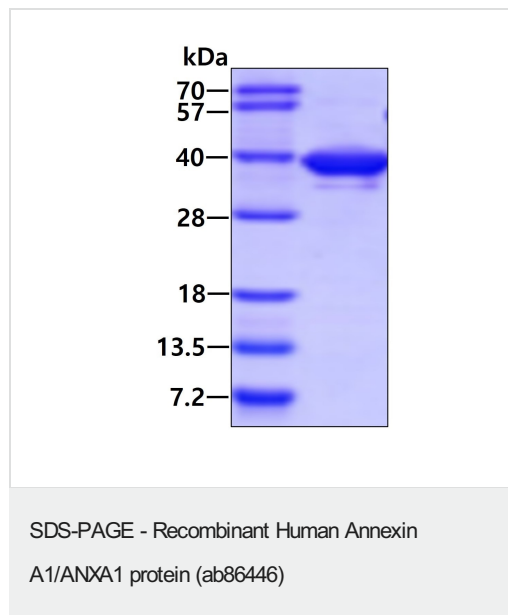
### 翻译后修饰

Phosphorylated by protein kinase C, epidermal growth factor receptor/kinase and TRPM7.  
Phosphorylation results in loss of the inhibitory activity.

### 细胞定位

Nucleus. Cytoplasm. Cell projection > cilium. Basolateral cell membrane. Found in the cilium, nucleus and basolateral cell membrane of ciliated cells in the tracheal endothelium (By similarity). Found in the cytoplasm of type II pneumocytes and alveolar macrophages.

## 图片



15% SDS-PAGE showing ab86446 at approximately 38.7kDa (3µg).

**Please note:** All products are "FOR RESEARCH USE ONLY. NOT FOR USE IN DIAGNOSTIC PROCEDURES"

## Our Abpromise to you: Quality guaranteed and expert technical support

- Replacement or refund for products not performing as stated on the datasheet

- Valid for 12 months from date of delivery
- Response to your inquiry within 24 hours
  
- We provide support in Chinese, English, French, German, Japanese and Spanish
- Extensive multi-media technical resources to help you
- We investigate all quality concerns to ensure our products perform to the highest standards

If the product does not perform as described on this datasheet, we will offer a refund or replacement. For full details of the Abpromise, please visit <https://www.abcam.cn/abpromise> or contact our technical team.

### **Terms and conditions**

---

- Guarantee only valid for products bought direct from Abcam or one of our authorized distributors