

# Recombinant Human alpha COP I/COPA protein ab152291

## 1 图像

### 描述

---

产品名称	重组人alpha COP I/COPA蛋白
表达系统	Wheat germ
Accession	<b><u>P53621</u></b>
蛋白长度	Protein fragment
无动物成分	No
性质	Recombinant
种属	Human
序列	TKFETKSARVKGLSFHPKRPWILTSLHNGVIQLWDYRMCTLI DKFDEHDG PVRGIDFHKQQPLFVSGGDDYKIKVWNYKLRRCLFTLLGHLD YIRTTF
预测分子量	37 kDa including tags
氨基酸	3 to 100

### 技术指标

---

Our **Abpromise guarantee** covers the use of **ab152291** in the following tested applications.

The application notes include recommended starting dilutions; optimal dilutions/concentrations should be determined by the end user.

应用	Western blot SDS-PAGE ELISA
形式	Liquid
补充说明	This product was previously labelled as alpha COP I.

### 制备和贮存

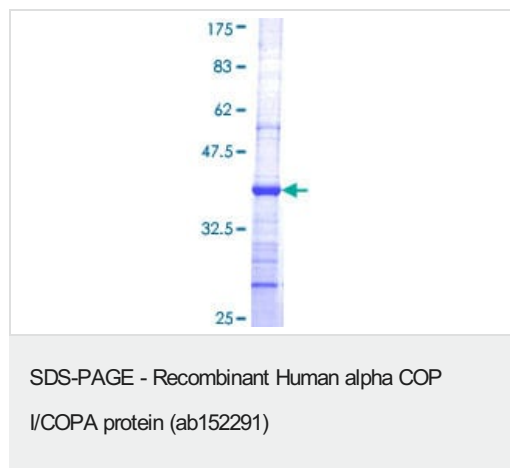
---

稳定性和存储	Shipped on dry ice. Upon delivery aliquot and store at -80°C. Avoid freeze / thaw cycles. pH: 8.00 Constituents: 0.31% Glutathione, 0.79% Tris HCl
--------	--

## 常规信息

<b>功能</b>	<p>The coatomer is a cytosolic protein complex that binds to dilysine motifs and reversibly associates with Golgi non-clathrin-coated vesicles, which further mediate biosynthetic protein transport from the ER, via the Golgi up to the trans Golgi network. Coatomer complex is required for budding from Golgi membranes, and is essential for the retrograde Golgi-to-ER transport of dilysine-tagged proteins. In mammals, the coatomer can only be recruited by membranes associated to ADP-ribosylation factors (ARFs), which are small GTP-binding proteins; the complex also influences the Golgi structural integrity, as well as the processing, activity, and endocytic recycling of LDL receptors.</p> <p>Xenin stimulates exocrine pancreatic secretion. It inhibits pentagastrin-stimulated secretion of acid, to induce exocrine pancreatic secretion and to affect small and large intestinal motility. In the gut, xenin interacts with the neurotensin receptor.</p>
<b>组织特异性</b>	Uniformly expressed in a wide range of adult and fetal tissues. Xenin is found in gastric, duodenal and jejunal mucosa. Circulates in the blood. Seems to be confined to specific endocrine cells.
<b>序列相似性</b>	Contains 6 WD repeats.
<b>发展阶段</b>	Xenin is released into the circulation after a meal.
<b>细胞定位</b>	Secreted and Cytoplasm. Golgi apparatus membrane. Cytoplasmic vesicle > COPI-coated vesicle membrane. The coatomer is cytoplasmic or polymerized on the cytoplasmic side of the Golgi, as well as on the vesicles/buds originating from it.

## 图片



12.5% SDS-PAGE showing ab152291 stained with Coomassie Blue.

**Please note:** All products are "FOR RESEARCH USE ONLY. NOT FOR USE IN DIAGNOSTIC PROCEDURES"

## Our Abpromise to you: Quality guaranteed and expert technical support

- Replacement or refund for products not performing as stated on the datasheet
- Valid for 12 months from date of delivery
- Response to your inquiry within 24 hours
- We provide support in Chinese, English, French, German, Japanese and Spanish

- Extensive multi-media technical resources to help you
- We investigate all quality concerns to ensure our products perform to the highest standards

If the product does not perform as described on this datasheet, we will offer a refund or replacement. For full details of the Abpromise, please visit <https://www.abcam.cn/abpromise> or contact our technical team.

### **Terms and conditions**

---

- Guarantee only valid for products bought direct from Abcam or one of our authorized distributors