

Recombinant human alpha A Crystallin/CRYAA protein ab48778

2 References 2 图像

描述	
产品名称	重组人alpha A Crystallin/CRYAA蛋白
纯度	> 90 % SDS-PAGE.
表达系统	Escherichia coli
蛋白长度	Full length protein
无动物成分	No
性质	Recombinant
种属	Human
序列	MDVTIQHPWF KRTLGPFYPS RLFDQFFGEG LFEYDLLPFL SSTISPYRQ SLFRTVLDSG ISEVRSDRDK FVIFLDVKHF SPEDLTVKVQ DDFVEIHGKH NERQDDHGYI SREFHRRYRL PSNVDQSALS CSLSADGMLT FCGPKIQTGL DATHAERAIP VSREEKPTSA PSS
氨基酸	1 to 173

技术指标	
Our Abpromise guarantee covers the use of ab48778 in the following tested applications.	
The application notes include recommended starting dilutions; optimal dilutions/concentrations should be determined by the end user.	
应用	Functional Studies SDS-PAGE Western blot
形式	Liquid
补充说明	This product was previously labelled as alpha A Crystallin

制备和贮存	
稳定性和存储	Shipped at 4°C. Upon delivery aliquot and store at -20°C. Avoid freeze / thaw cycles.

pH: 7.50

Constituents: 0.316% Tris HCl, 0.0292% EDTA, 0.29% Sodium chloride

This product is an active protein and may elicit a biological response in vivo, handle with caution.

常规信息

功能

May contribute to the transparency and refractive index of the lens.

疾病相关

Defects in CRYAA are a cause of cataract autosomal dominant (ADC) [MIM:604219]. Cataract is an opacification of the crystalline lens of the eye that frequently results in visual impairment or blindness. Opacities vary in morphology, are often confined to a portion of the lens, and may be static or progressive. In general, the more posteriorly located and dense an opacity, the greater the impact on visual function. Cataract is the most common treatable cause of visual disability in childhood.

序列相似性

Belongs to the small heat shock protein (HSP20) family.

翻译后修饰

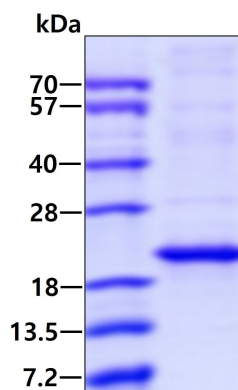
O-glycosylated; contains N-acetylglucosamine side chains.

Deamidation of Asn-101 in lens occurs mostly during the first 30 years of age, followed by a small additional amount of deamidation (approximately 5%) during the next approximately 38 years, resulting in a maximum of approximately 50% deamidation during the lifetime of the individual. Phosphorylation on Ser-122 seems to be developmentally regulated. Absent in the first months of life, it appears during the first 12 years of human lifetime. The relative amount of phosphorylated form versus unphosphorylated form does not change over the lifetime of the individual.

细胞定位

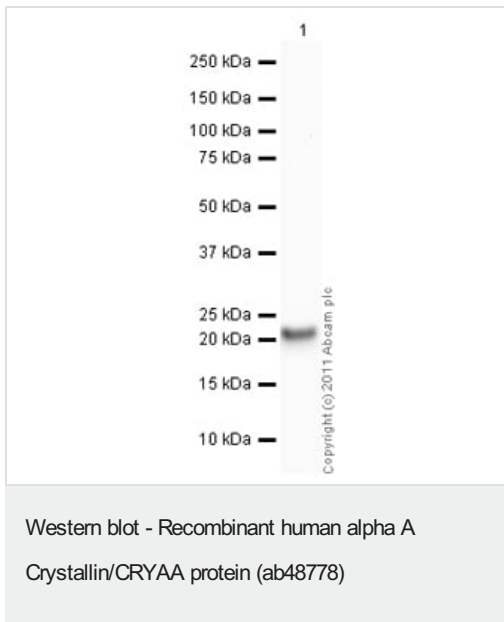
Cytoplasm. Nucleus. Translocates to the nucleus during heat shock and resides in sub-nuclear structures known as SC35 speckles or nuclear splicing speckles.

图片



3ug by SDS-PAGE under reducing condition and visualized by coomassie blue stain.

SDS-PAGE - Recombinant human alpha A
Crystallin/CRYAA protein (ab48778)



Please note: All products are "FOR RESEARCH USE ONLY. NOT FOR USE IN DIAGNOSTIC PROCEDURES"

Our Abpromise to you: Quality guaranteed and expert technical support

- Replacement or refund for products not performing as stated on the datasheet
- Valid for 12 months from date of delivery
- Response to your inquiry within 24 hours
- We provide support in Chinese, English, French, German, Japanese and Spanish
- Extensive multi-media technical resources to help you
- We investigate all quality concerns to ensure our products perform to the highest standards

If the product does not perform as described on this datasheet, we will offer a refund or replacement. For full details of the Abpromise, please visit <https://www.abcam.cn/abpromise> or contact our technical team.

Terms and conditions

- Guarantee only valid for products bought direct from Abcam or one of our authorized distributors