

Recombinant Human Aggrecan protein ab114254

1 图像

描述	
产品名称	重组人Aggrecan蛋白
表达系统	Wheat germ
Accession	<u>Q6PID9</u>
蛋白长度	Protein fragment
无动物成分	No
性质	Recombinant
种属	Human
序列	MTTLLWVFVTLRVITAAAVTVETSDHDNSLSVSIPQPSPLRVL LGTSLTIP CYFIDPMHPVTTAPSTAPLAPRIKWSRVSKEKEVLLVATEG RVRVNSAY QDKVSLPNYPAIPSDATLEVQSLRSNDSGVYRCEVMHGIEDS EATLEVVV KGIVFHYRAISTRYTLDFDRAQRACLQNSAIIATPEQLQAAY EDGFHQCD AGWLADQTVRYPIHTPREGCYGDKDEFPGVRTYGIRDTNETY DVYCFAEE MEGEVFIYATSPEKFTFQEAANECRRLGARLATTGQLYLAWQA GMDMCSAG WLADRSVRYPISKARPNCGGNLLGVRTVYVHANQTGYDPDSS RYDAICYT GEDFVDIPENFFGVGGEEDITVQTVTWPMELPLPRNITEGE ARGSVILT VKPIFEVSPSPLEPEEPFTFAPEIGATAFAEVENETGEATRP WGFPTPGL GPATAFTSEDLVVQVTAVPGQPHLPGGVVFHYRPGPTRYSLT FEEAQQAC LRTGAVIASPEQLQAAYEAGYEQCDAGWLRDQTVRYPIVSPR TPCVGDKD SSPGVRTYGVVPSTETYDVYCFVDRLEGEVFFATRLEQFTFQ EAEFCES HNATLATTGQLYAAWSRGLDKCYAGWLADGSLRYPIVTPRPA CGGDKPGV RTVYLYPNQTGLPDPLSRHHAFCFRGMQPHFGSNSPFCLERT PLGSPDPA TTQYPPIHQSKKMSVPLGQSQL

预测分子量	105 kDa including tags
氨基酸	1 to 721
标签	GST tag N-Terminus

技术指标

Our **Abpromise guarantee** covers the use of **ab114254** in the following tested applications.

The application notes include recommended starting dilutions; optimal dilutions/concentrations should be determined by the end user.

应用	ELISA
	SDS-PAGE
	Western blot
形式	Liquid
补充说明	

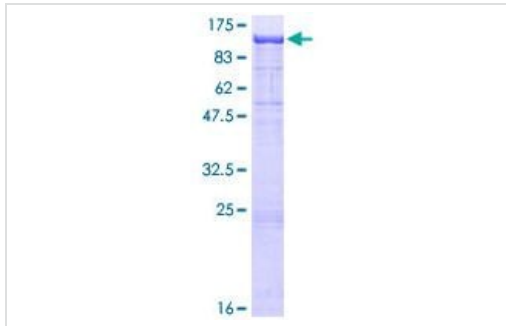
制备和贮存

稳定性和存储	Shipped on dry ice. Upon delivery aliquot and store at -80°C. Avoid freeze / thaw cycles. pH: 8.00 Constituents: 0.3% Glutathione, 0.79% Tris HCl
--------	---

常规信息

相关性	Aggrecan is a member of a family of large, aggregating proteoglycans (also including versican, brevican and neurocan) which is found in articular cartilage. Aggrecan is composed of three major domains: G1, G2, and G3. Between the G1 and G2 domains there is an interglobulin region (IGD). The IGD region is the major site of cleavage by specific proteases like metalloproteinases (MMPs) and aggrecanase. Aggrecan cleavage has been associated with a number of degenerative diseases including rheumatoid arthritis and osteoarthritis. There is evidence that this family of proteoglycans modulates cell adhesion, migration, and axonal outgrowth in the CNS.
细胞定位	Secreted; extracellular matrix.

图片



SDS-PAGE - Recombinant Human Aggrecan protein
(ab114254)

ab114254 analysed by 12.5% SDS-PAGE and stained with Coomassie Blue.

Please note: All products are "FOR RESEARCH USE ONLY. NOT FOR USE IN DIAGNOSTIC PROCEDURES"

Our Abpromise to you: Quality guaranteed and expert technical support

- Replacement or refund for products not performing as stated on the datasheet
- Valid for 12 months from date of delivery
- Response to your inquiry within 24 hours
- We provide support in Chinese, English, French, German, Japanese and Spanish
- Extensive multi-media technical resources to help you
- We investigate all quality concerns to ensure our products perform to the highest standards

If the product does not perform as described on this datasheet, we will offer a refund or replacement. For full details of the Abpromise, please visit <https://www.abcam.cn/abpromise> or contact our technical team.

Terms and conditions

- Guarantee only valid for products bought direct from Abcam or one of our authorized distributors