

Recombinant Human ADAM10 protein ab82822

1 图像

描述

产品名称	重组人ADAM10蛋白
纯度	> 95 % SDS-PAGE.
表达系统	Escherichia coli
Accession	<u>O14672</u>
蛋白长度	Protein fragment
无动物成分	No
性质	Recombinant
种属	Human
氨基酸	214 to 672
标签	His tag N-Terminus
额外的序列信息	The His tag is a 6-His tag.

技术指标

Our **Abpromise guarantee** covers the use of **ab82822** in the following tested applications.

The application notes include recommended starting dilutions; optimal dilutions/concentrations should be determined by the end user.

应用	SDS-PAGE
形式	Liquid

制备和贮存

稳定性和存储	Shipped at 4°C. Upon delivery aliquot and store at -20°C. Avoid freeze / thaw cycles. pH: 7.20 Constituents: PBS, 50% Glycerol
--------	--

常规信息

功能	Cleaves the membrane-bound precursor of TNF-alpha at '76-Ala-Val-77' to its mature soluble form. Responsible for the proteolytical release of soluble JAM3 from
----	---

endothelial cells surface. Responsible for the proteolytic release of several other cell-surface proteins, including heparin-binding epidermal growth-like factor, ephrin-A2 and for constitutive and regulated alpha-secretase cleavage of amyloid precursor protein (APP). Contributes to the normal cleavage of the cellular prion protein. Involved in the cleavage of the adhesion molecule L1 at the cell surface and in released membrane vesicles, suggesting a vesicle-based protease activity. Controls also the proteolytic processing of Notch and mediates lateral inhibition during neurogenesis.

组织特异性

Expressed in spleen, lymph node, thymus, peripheral blood leukocyte, bone marrow, cartilage, chondrocytes and fetal liver.

序列相似性

Contains 1 disintegrin domain.

Contains 1 peptidase M12B domain.

结构域

The conserved cysteine present in the cysteine-switch motif binds the catalytic zinc ion, thus inhibiting the enzyme. The dissociation of the cysteine from the zinc ion upon the activation-peptide release activates the enzyme.

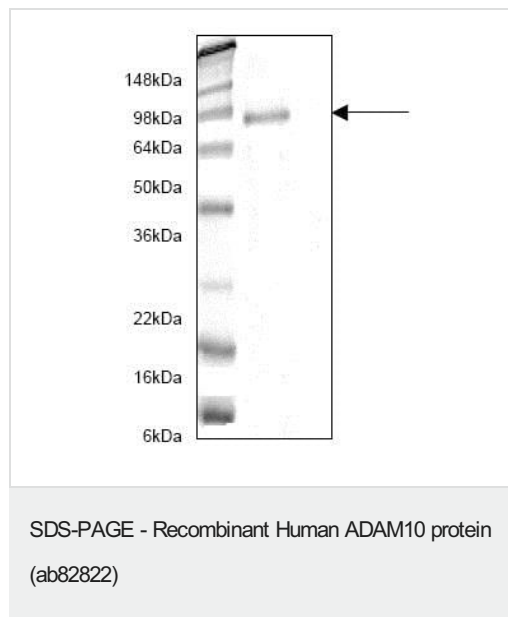
翻译后修饰

The precursor is cleaved by a furin endopeptidase.

细胞定位

Cell membrane. Endomembrane system. Is localized in the plasma membrane but is predominantly expressed in the Golgi apparatus and in released membrane vesicles derived likely from the Golgi.

图片



ab82822 on SDS-PAGE.

Please note: All products are "FOR RESEARCH USE ONLY. NOT FOR USE IN DIAGNOSTIC PROCEDURES"

Our Abpromise to you: Quality guaranteed and expert technical support

- Replacement or refund for products not performing as stated on the datasheet
- Valid for 12 months from date of delivery
- Response to your inquiry within 24 hours
- We provide support in Chinese, English, French, German, Japanese and Spanish

- Extensive multi-media technical resources to help you
- We investigate all quality concerns to ensure our products perform to the highest standards

If the product does not perform as described on this datasheet, we will offer a refund or replacement. For full details of the Abpromise, please visit <https://www.abcam.cn/abpromise> or contact our technical team.

Terms and conditions

- Guarantee only valid for products bought direct from Abcam or one of our authorized distributors