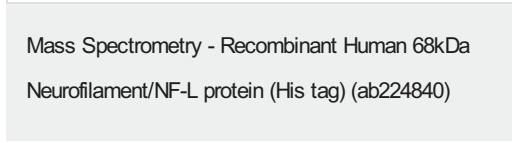


Recombinant Human 68kDa Neurofilament/NF-L protein (His tag)  
ab224840

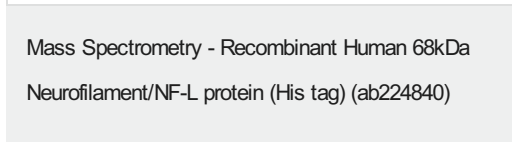
★★★★★ [1 Abreviews](#) [2 References](#) [2 图像](#)

描述	
产品名称	重组人68kDa Neurofilament/NF-L蛋白(His tag)
纯度	> 90 % SDS-PAGE.
表达系统	Escherichia coli
Accession	<b><u>P07196</u></b>
蛋白长度	Full length protein
无动物成分	No
性质	Recombinant
种属	Human
序列	SSFSYEPYYSTSYKRRYVETPRVHISSVRSGYSTARSAYSSY SAPVSSSL SVRRSYSSSSGSLMPLENLDLSQVA AISNDLKSIRTQEKAQ LQDLNDRF ASFIERVHELEQQNKVLEAELLVLRQKHSEPSRFRALYEQEI RDLRLAAE DATNEKQALQGEREGLEETLRNLQARYEEEVLSREDAEGRLM EARKGADE AALARAELEKRIDSLMDEISFLKKVHEEEIAELQAQIQYAQI SVEMDVTK PDL SAALKDIRAQYEKLAAKNMQNAEEWFKSRFTVLTESAAK NTDAVRAA KDEVSESRRLLKAKTLEIEACRGMNEALEKQLQELEDKQNAD ISAMQDTI NKLENELRTTKSEMARYLKEYQDLLNVKMALDIEIAAYRKLL EGEETRLS FTSVGSITSGYSQSSQVFGRSAYGGLQTSSYLMSTRSFPSYY TSHVQEEQ IEVEETIEAAKAEAAKDEPPSEGEAEEEEKDKEEAEEEEAAE EEEEAKEE SEEAKEEEEGGEGEGEETKEAEEEEKKVEGAGEEQAAKKKD
预测分子量	81 kDa including tags
氨基酸	2 to 543

标签	His tag N-Terminus
额外的序列信息	10xHis-SUMO tag at the N-terminus and Myc tag at the C-terminus.
<b>技术指标</b>	
Our <b>Abpromise guarantee</b> covers the use of <b>ab224840</b> in the following tested applications.	
The application notes include recommended starting dilutions; optimal dilutions/concentrations should be determined by the end user.	
应用	Mass Spectrometry SDS-PAGE
质谱法	LC-MS/MS
形式	Liquid
补充说明	Previously labelled as 68kDa Neurofilament.
<b>制备和贮存</b>	
稳定性和存储	Shipped at 4°C. Upon delivery aliquot. Store at -20°C or -80°C. Avoid freeze / thaw cycle. pH: 7.2 Constituents: 50% Glycerol (glycerin, glycerine), Tris buffer
<b>常规信息</b>	
功能	Neurofilaments usually contain three intermediate filament proteins: L, M, and H which are involved in the maintenance of neuronal caliber.
疾病相关	Defects in NEFL are the cause of Charcot-Marie-Tooth disease type 1F (CMT1F) [MIM:607734]. CMT1F is a form of Charcot-Marie-Tooth disease, the most common inherited disorder of the peripheral nervous system. Charcot-Marie-Tooth disease is classified in two main groups on the basis of electrophysiologic properties and histopathology: primary peripheral demyelinating neuropathy or CMT1, and primary peripheral axonal neuropathy or CMT2. Neuropathies of the CMT1 group are characterized by severely reduced nerve conduction velocities (less than 38 m/sec), segmental demyelination and remyelination with onion bulb formations on nerve biopsy, slowly progressive distal muscle atrophy and weakness, absent deep tendon reflexes, and hollow feet. CMT1F is characterized by onset in infancy or childhood (range 1 to 13 years). Defects in NEFL are the cause of Charcot-Marie-Tooth disease type 2E (CMT2E) [MIM:607684]. CMT2E is an autosomal dominant form of Charcot-Marie-Tooth disease type 2. Neuropathies of the CMT2 group are characterized by signs of axonal regeneration in the absence of obvious myelin alterations, normal or slightly reduced nerve conduction velocities, and progressive distal muscle weakness and atrophy.
序列相似性	Belongs to the intermediate filament family.
结构域	The extra mass and high charge density that distinguish the neurofilament proteins from all other intermediate filament proteins are due to the tailpiece extensions. This region may form a charged scaffolding structure suitable for interaction with other neuronal components or ions.
翻译后修饰	O-glycosylated. Phosphorylated in the Head and Rod regions by the PKC kinase PKN1, leading to inhibit polymerization.



Based on the SEQUEST from database of E.coli host and target protein, the LC-MS/MS analysis result of ab224840 could indicate that this peptide derived from E.coli-expressed human Neurofilament protein.



Based on the SEQUEST from database of E.coli host and target protein, the LC-MS/MS analysis result of ab224840 could indicate that this peptide derived from E.coli-expressed human Neurofilament protein.

- Replacement or refund for products not performing as stated on the datasheet
  - Valid for 12 months from date of delivery
  - Response to your inquiry within 24 hours
- 
- We provide support in Chinese, English, French, German, Japanese and Spanish
  - Extensive multi-media technical resources to help you
  - We investigate all quality concerns to ensure our products perform to the highest standards

please visit <https://www.abcam.cn/abpromise> or contact our technical team.

## Terms and conditions

---

- Guarantee only valid for products bought direct from Abcam or one of our authorized distributors