

Recombinant Human 67kDa Laminin Receptor protein ab114294

1 图像

| 描述 | |
|-----------|-------------------------------------------------------------------------------------------------------------------------------------------------------------------------------------------------------------------------------------------------------------------------------------------------------------------------------------------------------|
| 产品名称 | 重组人67kDa Laminin Receptor蛋白 |
| 表达系统 | Wheat germ |
| Accession | <u>P08865</u> |
| 蛋白长度 | Full length protein |
| 无动物成分 | No |
| 性质 | Recombinant |
| 种属 | Human |
| 序列 | MSGALDVLQMKEEDVLKFLAAGTHLGGTNLDFQMEQYIYKRK SDGIYIIN LKRTWEKLLLLAARAIVAIENPADVSVISSRNTGQRAVLKFAA ATGATPIA GRFTPGTFTNQIQAAFREPRLLVVTDPRAGHQPLTEASYVNL PTIALCNT DSPLRYVDIAIPCNNKGAHSVGLMWWMLAREVLRMRGTISRE HPWEVMPD LYFYRDPEEIEKEEQAAAEKAVTKKEEFQGEWTAPAPEFTATQ PEVADWSE GVQVPSVPIQQFPTEDWSAQPATEDWSAAPTAQATEWVGATT DWS |
| 预测分子量 | 59 kDa including tags |
| 氨基酸 | 1 to 295 |

| 技术指标 | |
|--------------------------------------------------------------------------------------------------------------------------------------|-------------------------------------------|
| Our Abpromise guarantee covers the use of ab114294 in the following tested applications. | |
| The application notes include recommended starting dilutions; optimal dilutions/concentrations should be determined by the end user. | |
| 应用 | Western blot ELISA SDS-PAGE |
| 形式 | Liquid |

稳定性和存储

Shipped on dry ice. Upon delivery aliquot and store at -80°C. Avoid freeze / thaw cycles.

pH: 8.00

Constituents: 0.3% Glutathione, 0.79% Tris HCl

常规信息

功能

Required for the assembly and/or stability of the 40S ribosomal subunit. Required for the processing of the 20S rRNA-precursor to mature 18S rRNA in a late step of the maturation of 40S ribosomal subunits. Also functions as a cell surface receptor for laminin. Plays a role in cell adhesion to the basement membrane and in the consequent activation of signaling transduction pathways. May play a role in cell fate determination and tissue morphogenesis. Acts as a PPP1R16B-dependent substrate of PPP1CA. Also acts as a receptor for several other ligands, including the pathogenic prion protein, viruses, and bacteria.

序列相似性

Belongs to the ribosomal protein S2P family.

翻译后修饰

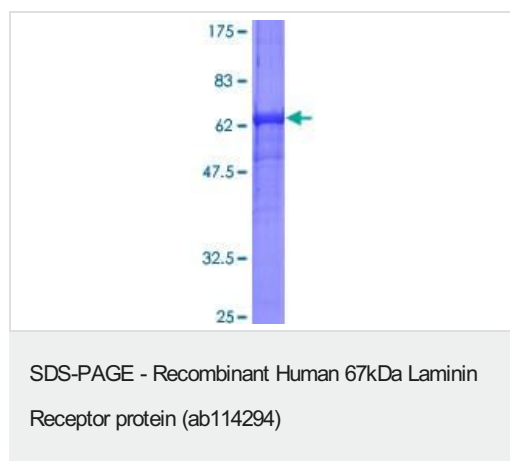
Acylated. Acylation may be a prerequisite for conversion of the monomeric 37 kDa laminin receptor precursor (37LRP) to the mature dimeric 67 kDa laminin receptor (67LR), and may provide a mechanism for membrane association.

Cleaved by stromelysin-3 (ST3) at the cell surface. Cleavage by stromelysin-3 may be a mechanism to alter cell-extracellular matrix interactions.

细胞定位

Cell membrane. Cytoplasm. Nucleus. 67LR is found at the surface of the plasma membrane, with its C-terminal laminin-binding domain accessible to extracellular ligands. 37LRP is found at the cell surface, in the cytoplasm and in the nucleus (By similarity). Co-localizes with PPP1R16B in the cell membrane.

图片



12.5% SDS-PAGE image showing ab114294 at approx 58.56kDa. Stained with Coomassie Blue.

Please note: All products are "FOR RESEARCH USE ONLY. NOT FOR USE IN DIAGNOSTIC PROCEDURES"

Our Abpromise to you: Quality guaranteed and expert technical support

- Replacement or refund for products not performing as stated on the datasheet

- Valid for 12 months from date of delivery
- Response to your inquiry within 24 hours
- We provide support in Chinese, English, French, German, Japanese and Spanish
- Extensive multi-media technical resources to help you
- We investigate all quality concerns to ensure our products perform to the highest standards

If the product does not perform as described on this datasheet, we will offer a refund or replacement. For full details of the Abpromise, please visit <https://www.abcam.cn/abpromise> or contact our technical team.

Terms and conditions

- Guarantee only valid for products bought direct from Abcam or one of our authorized distributors