

Recombinant HPV18 L1 protein ab119881

4 图像

描述

产品名称	重组HPV18 L1蛋白
纯度	> 90 % SDS-PAGE. ab119881 is purified by ultracentrifugation.
表达系统	Saccharomyces cerevisiae
Accession	AAQ92369.1
蛋白长度	Full length protein
无动物成分	No
性质	Recombinant
序列	MALWRPSDNTVYLPSPSVARVVNTDDYVTRTSIFYHAGSSRL LTVGNPYF RVPAGGGNKQDIPKVSAYQYRVFRVQLPDPNKFGLPDTSIYN PETQRLVW ACAGVEIGRGQPLGVLSGHPFYNKLDDTESSHAATSNSVED VRDNVSVD YKQTQLCILGCAPAIGEHWAKGTACKSRPLSQGDPCPLELKN TVLEDGDM VDTGYGAMDFSTLQDTKCEVPLDICQSICKYDPDYLQMSADPY GDSMFFCL RREQLFARHFWRAGTMGDTVPSLYIKGTGMRASPGSCVYS PSPSGSIV TSDSQLFNKPYWLHKAQGHNNGVCWHNQLFVTVDTRSTNL TICASTQS PVPGQYDATKFKQYSRHVEEYDLQFIFQLCTITLTADVMSYI HSMNSSIL EDWNGVPPPPTTSLVDTYRFVQSVAITCQKDAAPAENKDPY DKLKFWNV DLKEKFSLDLDQYPLGRKFLVQAGLRRKPTIGPRKRSAPSAT TSSKPAKR VRVRARK
预测分子量	57 kDa
氨基酸	1 to 357

技术指标

Our **Abpromise guarantee** covers the use of **ab119881** in the following tested applications.

The application notes include recommended starting dilutions; optimal dilutions/concentrations should be determined by the end user.

应用	Western blot SDS-PAGE Electron Microscopy
形式	Lyophilized

制备和贮存

稳定性和存储	Shipped at 4°C. After reconstitution store at -20°C. Avoid freeze / thaw cycles. Constituent: 99% PBS
复溶	Reconstitute in 50 µl of water. Then dilute with PBS to the required concentration.

常规信息

相关性	L1 is a major capsid protein of type 18 human papilloma virus. Infection with specific types of HPV has been associated with an increased risk of developing cervical neoplasia. HPV types 6 and 11 have been associated with relatively benign diseases such as genital warts but types 16 and 18 are strongly associated with cervical, vaginal, and vulvar malignancies.
------------	---

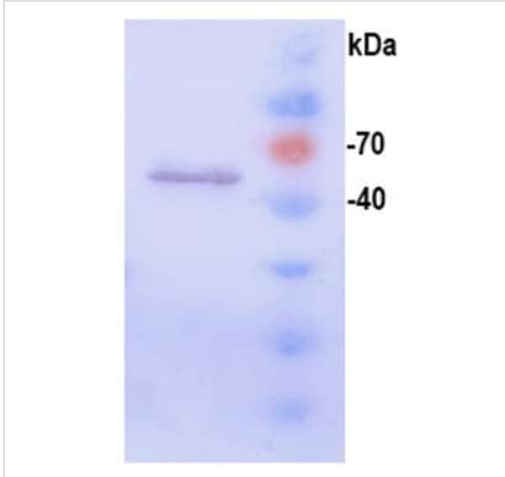
细胞定位	Virion
-------------	--------

图片



SDS-PAGE analysis of ab119881.

Lane 1. ab119881
Lane 2. MWt marker



Western blot - Recombinant HPV18 L1 protein (ab119881)

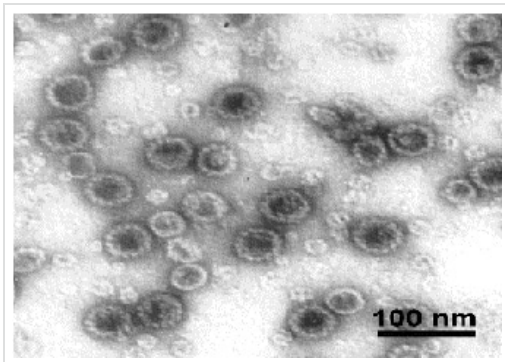
Recombinant HPV18 L1 protein (ab119881)

Predicted band size: 56.5 kDa

Western blot analysis of ab119881.

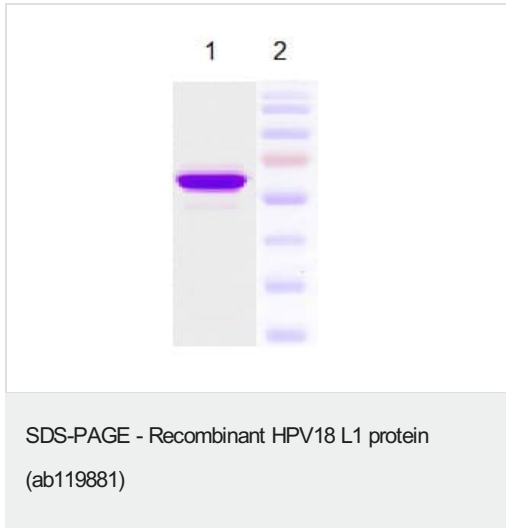
Lane 1. ab119881

Lane 2. MWt marker



Electron Microscopy - Recombinant HPV18 L1 protein (ab119881)

ab119881 viewed by electron microscopy.



SDS-PAGE analysis of ab119881.

Lane 1. ab119881, 3 µg/lane

Lane 2. MWt marker 11.0, 17.0, 26.0, 34.0, 43.0, 55.0, 72.0, 95.0, 130.0, 170.0 kDa.

Please note: All products are "FOR RESEARCH USE ONLY. NOT FOR USE IN DIAGNOSTIC PROCEDURES"

Our Abpromise to you: Quality guaranteed and expert technical support

- Replacement or refund for products not performing as stated on the datasheet
- Valid for 12 months from date of delivery
- Response to your inquiry within 24 hours
- We provide support in Chinese, English, French, German, Japanese and Spanish
- Extensive multi-media technical resources to help you
- We investigate all quality concerns to ensure our products perform to the highest standards

If the product does not perform as described on this datasheet, we will offer a refund or replacement. For full details of the Abpromise, please visit <https://www.abcam.cn/abpromise> or contact our technical team.

Terms and conditions

- Guarantee only valid for products bought direct from Abcam or one of our authorized distributors