

Product datasheet

Recombinant dog IL-2 protein (Active) ab233593

2 图像

描述

产品名称	重组狗IL-2蛋白(Active)
生物活性	CTLL-2 cell proliferation: ED ₅₀ ≤ 5 ng/mL (≥ 2.0 x 10 ⁵ units/mg).
纯度	≥ 95 % SDS-PAGE.
内毒素水平	≤1.000 Eu/μg
表达系统	Escherichia coli
Accession	<u>Q29416</u>
蛋白长度	Full length protein
无动物成分	No
性质	Recombinant
种属	Dog
序列	<pre> MAPITSSSTKETEQQMEQLLLDLQLLLNGVNNYENPQLSRML TFKFYTPK KATEFTHLQCLAEELKNLEEVGLGPQSKNVHLTDTKELISNM NVTLLKLLK GSETSYNCEYDDETATITEFLNKWITFSQSIFSTLT </pre>
预测分子量	16 kDa
氨基酸	21 to 155
额外的序列信息	This product is the mature full length protein from aa 21 to 155. The signal peptide is not included.

技术指标

Our **Abpromise guarantee** covers the use of **ab233593** in the following tested applications.

The application notes include recommended starting dilutions; optimal dilutions/concentrations should be determined by the end user.

应用	Functional Studies
	SDS-PAGE
形式	Lyophilized

制备和贮存

稳定性和存储

Shipped at 4°C. Store at -20°C. Avoid freeze / thaw cycle.

Constituent: 0.17% Sodium bicarbonate

This product is an active protein and may elicit a biological response in vivo, handle with caution.

复溶

Centrifuge vial before opening. Reconstitute with sterile 10 mM sodium bicarbonate, pH 8.5 at 0.1 mg/ml. Suspend the product by gently pipetting the above recommended solution down the sides of the vial. DO NOT VORTEX. Allow several minutes for complete reconstitution. For prolonged storage, dilute to working aliquots in a 0.1% BSA solution, store at -80°C and avoid repeat freeze thaws.

常规信息

功能

Produced by T-cells in response to antigenic or mitogenic stimulation, this protein is required for T-cell proliferation and other activities crucial to regulation of the immune response. Can stimulate B-cells, monocytes, lymphokine-activated killer cells, natural killer cells, and glioma cells.

疾病相关

Note=A chromosomal aberration involving IL2 is found in a form of T-cell acute lymphoblastic leukemia (T-ALL). Translocation t(4;16)(q26;p13) with involves TNFRSF17.

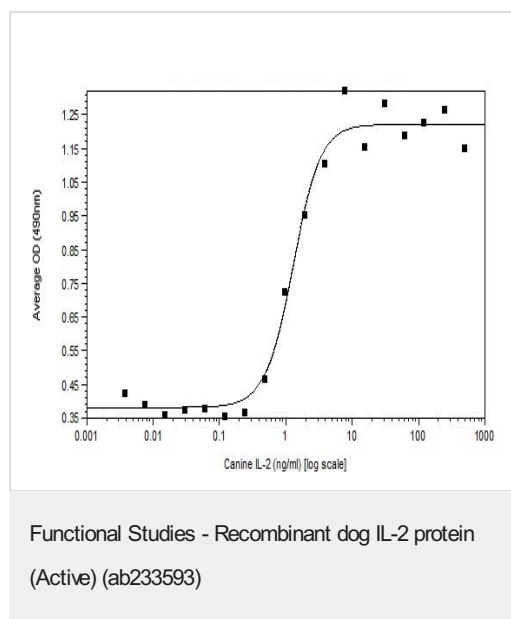
序列相似性

Belongs to the IL-2 family.

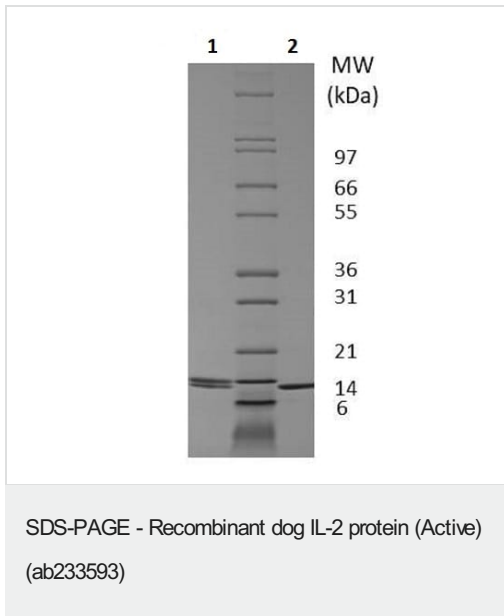
细胞定位

Secreted.

图片



ab233593 induced proliferation of CTLL-2 cells.



1 μ g ab233593 analyzed on a 4-20% Tris-Glycine gel, stained with Coomassie Blue.

Lane 1: Non-reducing conditions.

Lane 2: Reducing conditions.

Please note: All products are "FOR RESEARCH USE ONLY. NOT FOR USE IN DIAGNOSTIC PROCEDURES"

Our Abpromise to you: Quality guaranteed and expert technical support

- Replacement or refund for products not performing as stated on the datasheet
- Valid for 12 months from date of delivery
- Response to your inquiry within 24 hours
- We provide support in Chinese, English, French, German, Japanese and Spanish
- Extensive multi-media technical resources to help you
- We investigate all quality concerns to ensure our products perform to the highest standards

If the product does not perform as described on this datasheet, we will offer a refund or replacement. For full details of the Abpromise, please visit <https://www.abcam.cn/abpromise> or contact our technical team.

Terms and conditions

- Guarantee only valid for products bought direct from Abcam or one of our authorized distributors